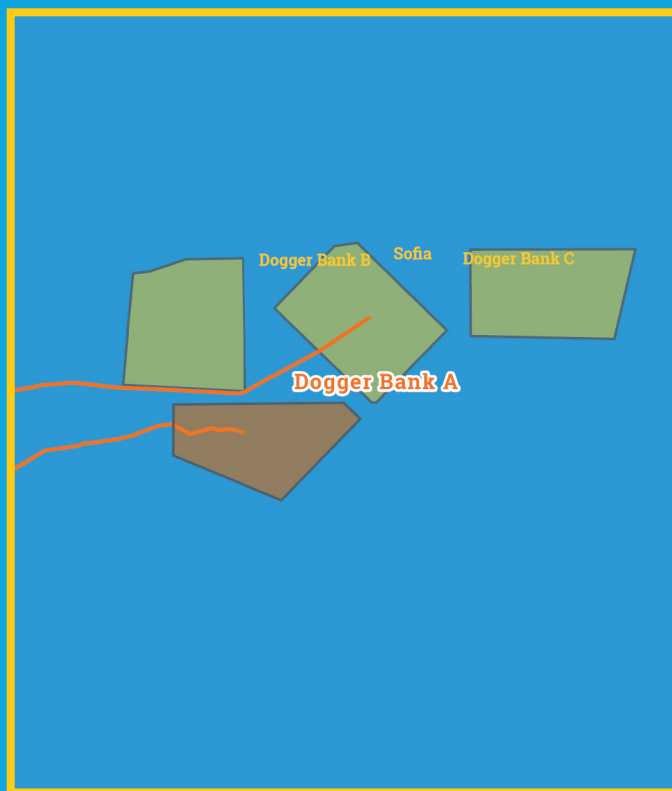




Kingfisher Wind farm Chart



Dogger Bank A
Offshore wind farm
April 2026



Emergency contact number
+44(0)3450 760530

Description

The Dogger Bank A Offshore Wind Farm is operated by Equinor. It is situated approximately 140 km from shore on Dogger Bank in the North Sea, off the Coast of North Yorkshire. The wind farm is fully constructed and has 95 turbines installed, and covers an area of approximately 515 km².

Emergency procedures

1. If you suspect you have snagged a subsea cable or renewable energy structure, DO NOT endanger your vessel and crew by attempting to recover your gear.
2. Carefully plot your vessel's position as accurately as possible.
3. Advise the Coastguard of your situation, and call the 24 hour Emergency Number and state that an incident is occurring concerning a subsea cable or renewable energy structure.



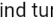
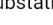

Reducing the risks whilst fishing

To reduce the risks of fishing near offshore structures, it is essential to be up to date with KIS-ORCA information. KIS-ORCA information is easy to install on your vessel's fishing plotter and ensures skippers are able to make informed decisions for their safety.

The closer to the surface a subsea cable is lifted when fouled by fishing gear, the more danger there is to the fishing vessel. In the interests of fishing safety and to prevent damage to subsea structures, fishermen are advised to exercise caution when fishing in the vicinity of subsea cables and renewable energy structures. Loss of gear, fishing time and catch can result if a trawler snags a subsea structure and there is serious risk of loss of life.

DOGGER BANK WIND FARM

Dogger Bank A Offshore Wind Farm

-  Site boundary
-  Wind turbine
-  Substation
-  Export cable
-  Inter array cable
-  Telecomms cable
-  Out of Use cable

Grey coloured features displayed on this chart represent additional offshore wind farm structures. Visit www.kis-orca.org/map for more info.

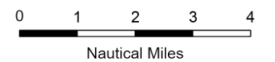


Projection: World_Mercator
Spheroid: GCS_WGS_1984
Datum: D_WGS_1984

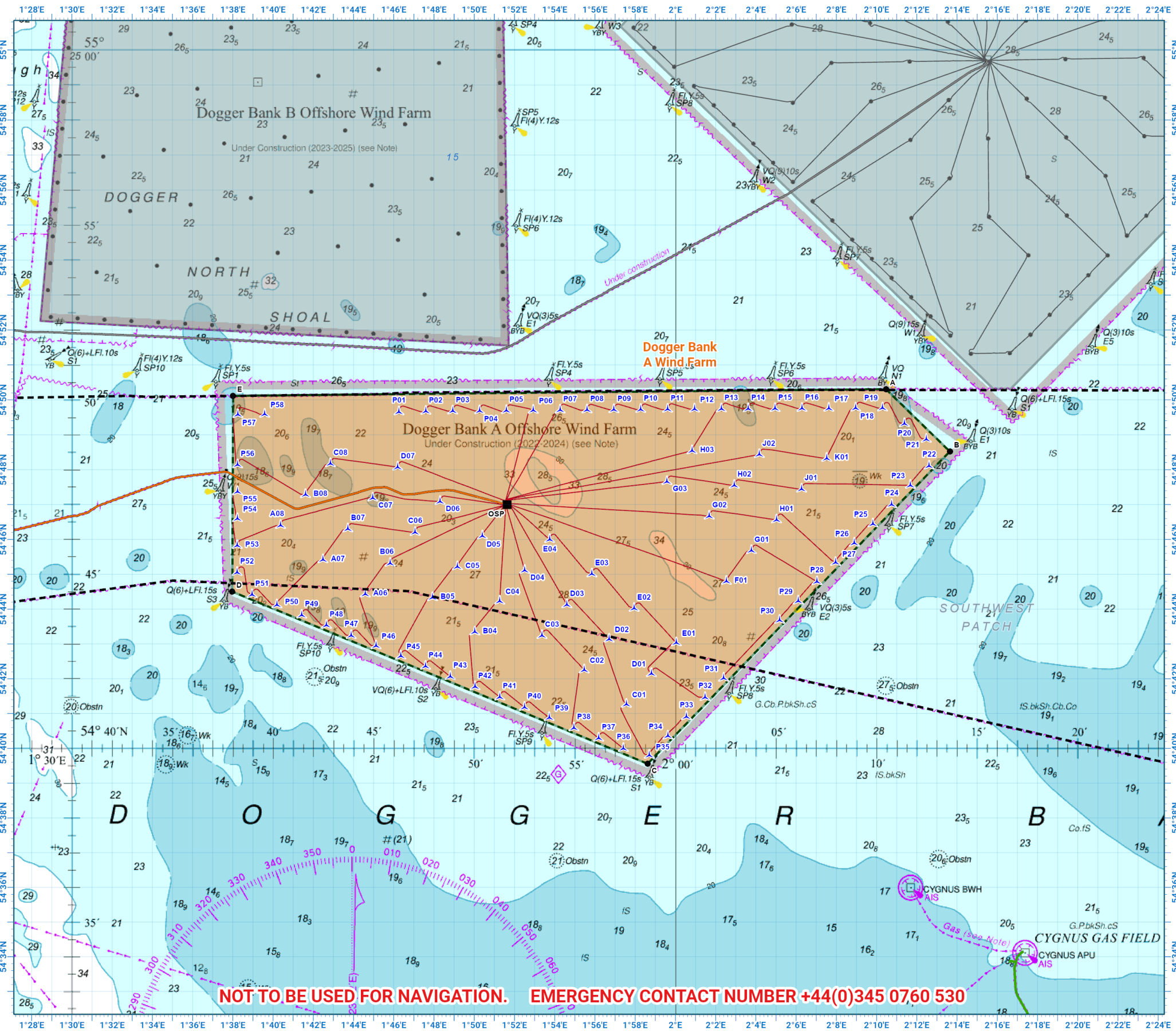
This data is issued as a guide only. Seafish, cable / structure owners and Distributors accept no responsibility for any inaccuracies however caused.

Please be aware that other structures & cables may exist in addition to those shown on this chart.

© British Crown Copyright, 2025/26. All rights reserved. Not to be used for Navigation.



Scale @ A3:
1:200,000



Asset locations

Extents

A	54°50.305'N 02°10.464'E
B	54°48.522'N 02°13.640'E
C	54°39.557'N 01°58.617'E
D	54°44.501'N 01°37.973'E
E	54°50.114'N 01°38.014'E

Infrastructure

OSP Substation	54°46.995'N 01°51.628'E
----------------	-------------------------

Turbines

A06	54°44.430'N 01°44.580'E
A07	54°45.415'N 01°42.476'E
A08	54°46.398'N 01°40.369'E
B04	54°43.343'N 01°50.024'E
B05	54°44.330'N 01°47.922'E
B06	54°45.315'N 01°45.819'E
B07	54°46.300'N 01°43.714'E
B08	54°47.284'N 01°41.607'E
C01	54°41.265'N 01°57.559'E
C02	54°42.253'N 01°55.462'E
C03	54°43.241'N 01°53.364'E
C04	54°44.228'N 01°51.263'E
C05	54°45.214'N 01°49.161'E
C06	54°46.200'N 01°47.058'E
C07	54°47.185'N 01°44.953'E
C08	54°48.170'N 01°42.846'E
D01	54°42.148'N 01°58.800'E
D02	54°43.137'N 01°56.703'E
D03	54°44.124'N 01°54.604'E
D04	54°45.112'N 01°52.504'E
D05	54°46.099'N 01°50.402'E
D06	54°47.085'N 01°48.298'E
D07	54°48.070'N 01°46.192'E
E01	54°43.031'N 02°00.043'E
E02	54°44.020'N 01°57.945'E
E03	54°45.008'N 01°55.846'E
E04	54°45.996'N 01°53.746'E
F01	54°44.795'N 02°02.530'E
G01	54°45.678'N 02°03.775'E
G02	54°46.668'N 02°01.677'E

Turbines

G03	54°47.657'N 01°59.577'E
H01	54°46.560'N 02°05.021'E
H02	54°47.550'N 02°02.923'E
H03	54°48.540'N 02°00.823'E
J01	54°47.441'N 02°06.268'E
J02	54°48.432'N 02°04.169'E
K01	54°48.323'N 02°07.516'E
P01	54°49.654'N 01°46.255'E
P02	54°49.671'N 01°47.590'E
P03	54°49.678'N 01°48.925'E
P04	54°49.686'N 01°50.260'E
P05	54°49.693'N 01°51.596'E
P06	54°49.699'N 01°52.931'E
P07	54°49.706'N 01°54.267'E
P08	54°49.712'N 01°55.603'E
P09	54°49.718'N 01°56.938'E
P10	54°49.724'N 01°58.273'E
P11	54°49.729'N 01°59.609'E
P12	54°49.735'N 02°00.944'E
P13	54°49.740'N 02°02.280'E
P14	54°49.744'N 02°03.615'E
P15	54°49.749'N 02°04.951'E
P16	54°49.753'N 02°06.287'E
P17	54°49.758'N 02°07.622'E
P18	54°49.762'N 02°08.958'E
P19	54°49.765'N 02°10.293'E
P20	54°49.318'N 02°11.381'E
P21	54°48.869'N 02°12.466'E
P22	54°48.102'N 02°12.607'E
P23	54°47.549'N 02°11.677'E

Turbines

P24	54°46.996'N 02°10.747'E
P25	54°46.444'N 02°09.817'E
P26	54°45.890'N 02°08.888'E
P27	54°45.337'N 02°07.959'E
P28	54°44.784'N 02°07.031'E
P29	54°44.230'N 02°06.103'E
P30	54°43.677'N 02°05.176'E
P31	54°42.015'N 02°02.396'E
P32	54°41.461'N 02°01.470'E
P33	54°40.907'N 02°00.545'E
P34	54°40.353'N 01°59.620'E
P35	54°39.798'N 01°58.696'E
P36	54°39.995'N 01°57.409'E
P37	54°40.291'N 01°56.181'E
P38	54°40.587'N 01°54.952'E
P39	54°40.882'N 01°53.724'E
P40	54°41.177'N 01°52.494'E
P41	54°41.473'N 01°51.265'E
P42	54°41.768'N 01°50.035'E
P43	54°42.063'N 01°48.805'E
P44	54°42.357'N 01°47.575'E
P45	54°42.652'N 01°46.344'E
P46	54°42.946'N 01°45.113'E
P47	54°43.240'N 01°43.882'E
P48	54°43.534'N 01°42.650'E
P49	54°43.827'N 01°41.418'E
P50	54°44.121'N 01°40.187'E
P51	54°44.414'N 01°38.954'E
P52	54°45.053'N 01°38.210'E
P53	54°45.824'N 01°38.216'E



Contact us

-  +44(0)131 380 4545
-  kingfisher@seafish.co.uk
-  @kingfisherinfo
-  @KingfisherInformation
-  www.kis-orca.org



Asset locations

Turbines	
P54	54°46.595'N 01°38.222'E
P55	54°47.366'N 01°38.227'E
P56	54°48.137'N 01°38.233'E
P57	54°49.576'N 01°38.244'E
P58	54°49.586'N 01°39.579'E



Contact us

- +44(0)131 380 4545
- kingfisher@seafish.co.uk
- @kingfisherinfo
- @KingfisherInformation
- www.kis-orca.org

