



Kingfisher Wind farm Chart



Hywind
Offshore wind farm
January 2026



Emergency contact number
+47(0)519 90000

Description

The Hywind Offshore Wind Farm is operated by Equinor. It is situated approximately 25 km from shore in the Northern North Sea, off Peterhead in the 'Buchan Deeps'. The wind farm is fully operational and has 5 turbines, a total capacity of 30 MW and covers an area of approximately 15 km².

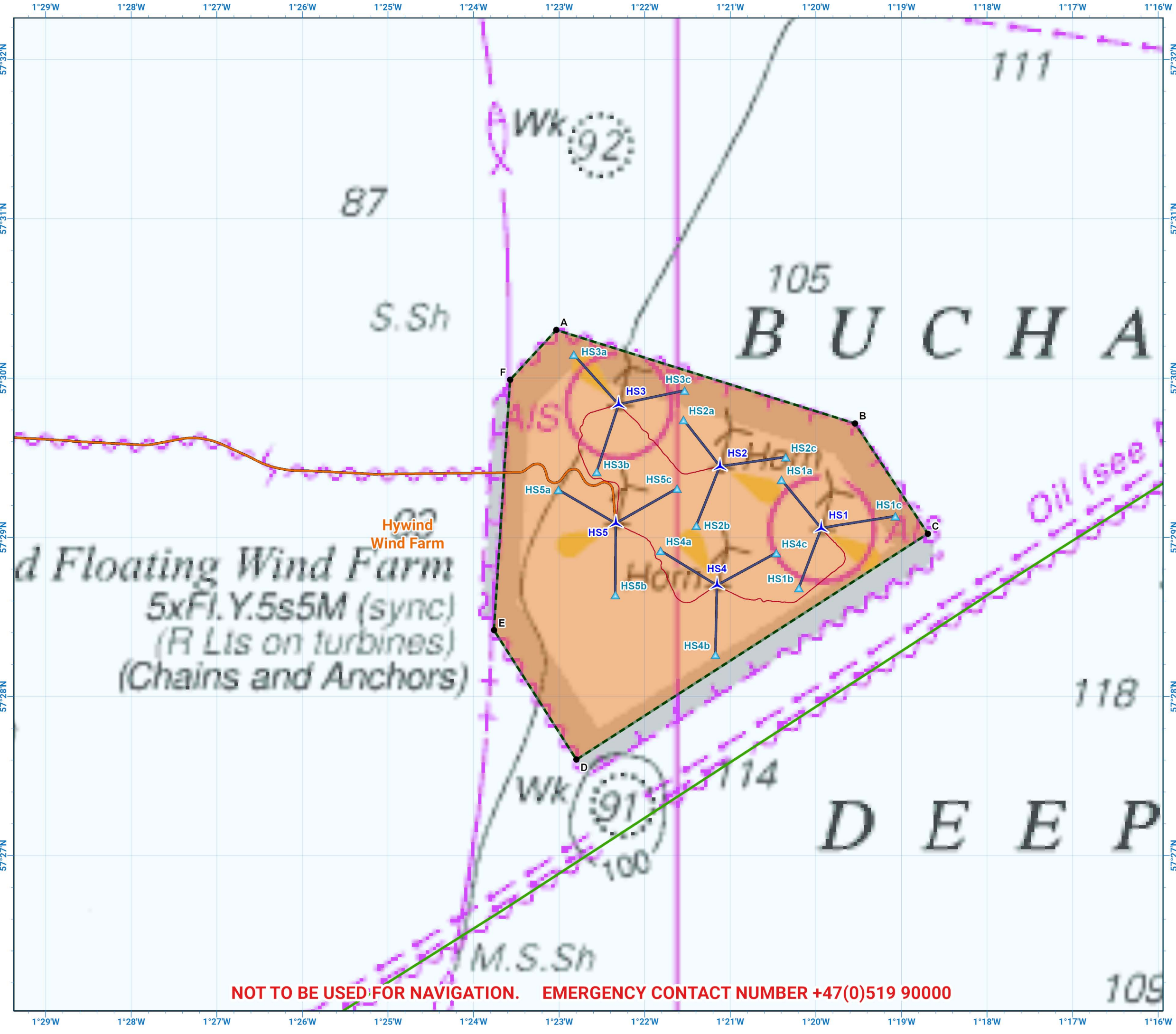
Emergency procedures

1. If you suspect you have snagged a subsea cable or renewable energy structure, DO NOT endanger your vessel and crew by attempting to recover your gear.
2. Carefully plot your vessel's position as accurately as possible.
3. Advise the Coastguard of your situation, and call the 24 hour Emergency Number and state that an incident is occurring concerning a subsea cable or renewable energy structure.

Reducing the risks whilst fishing

To reduce the risks of fishing near offshore structures, it is essential to be up to date with KIS-ORCA information. KIS-ORCA information is easy to install on your vessel's fishing plotter and ensures skippers are able to make informed decisions for their safety.

The closer to the surface a subsea cable is lifted when fouled by fishing gear, the more danger there is to the fishing vessel. In the interests of fishing safety and to prevent damage to subsea structures, fishermen are advised to exercise caution when fishing in the vicinity of subsea cables and renewable energy structures. Loss of gear, fishing time and catch can result if a trawler snags a subsea structure and there is serious risk of loss of life.



**Hywind
Offshore Wind Farm**

- Site boundary
- Wind turbine
- Anchor
- Anchor cable
- Export cable
- Inter array cable
- Telecomms cable

Grey coloured features displayed on this chart represent additional offshore wind farm structures. Visit www.kis-orca.org/map for more info.

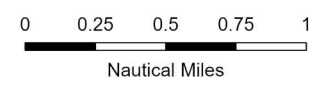


Projection: World_Mercator
Spheroid: GCS_WGS_1984
Datum: D_WGS_1984

This data is issued as a guide only. Seafish, cable / structure owners and Distributors accept no responsibility for any inaccuracies however caused.

Please be aware that other structures & cables may exist in addition to those shown on this chart.

© British Crown Copyright, 2025/26.
All rights reserved.
Not to be used for Navigation.



Scale @ A3:
1:50,000

NOT TO BE USED FOR NAVIGATION. EMERGENCY CONTACT NUMBER +47(0)519 90000

Asset locations

Extents		Turbines		Infrastructure	
A	57°30.302'N 01°23.033'W	HS1	57°29.056'N 01°19.937'W	HS1a	57°29.362'N 01°20.402'W
B	57°29.715'N 01°19.542'W	HS2	57°29.445'N 01°21.120'W	HS1b	57°28.683'N 01°20.198'W
C	57°29.023'N 01°18.692'W	HS3	57°29.834'N 01°22.305'W	HS1c	57°29.133'N 01°19.072'W
D	57°27.603'N 01°22.798'W	HS4	57°28.699'N 01°21.154'W	HS2a	57°29.738'N 01°21.547'W
E	57°28.417'N 01°23.762'W	HS5	57°29.088'N 01°22.338'W	HS2b	57°29.074'N 01°21.397'W
F	57°29.989'N 01°23.573'W			HS2c	57°29.504'N 01°20.353'W
				HS3a	57°30.148'N 01°22.829'W
				HS3b	57°29.412'N 01°22.561'W
				HS3c	57°29.922'N 01°21.534'W
				HS4a	57°28.916'N 01°21.815'W
				HS4b	57°28.263'N 01°21.174'W
				HS4c	57°28.902'N 01°20.462'W
				HS5a	57°29.299'N 01°23.009'W
				HS5b	57°28.639'N 01°22.343'W
				HS5c	57°29.307'N 01°21.622'W



Contact us

- +44(0)131 380 4545
- kingfisher@seafish.co.uk
- @kingfisherinfo
- @KingfisherInformation
- www.kis-orca.org

