



Kingfisher Wind farm Chart



Humber Gateway
Offshore wind farm
January 2026



Emergency contact number
+44(0)7891 412139

Description

The Humber Gateway Offshore Wind Farm is operated by RWE Renewables. It is situated approximately 10 km from shore in the Central North Sea, off the East Yorkshire coast. The wind farm is fully operational and has 73 turbines, a total capacity of 219 MW and covers an area of approximately 27 km².

Emergency procedures

1. If you suspect you have snagged a subsea cable or renewable energy structure, DO NOT endanger your vessel and crew by attempting to recover your gear.
2. Carefully plot your vessel's position as accurately as possible.
3. Advise the Coastguard of your situation, and call the 24 hour Emergency Number and state that an incident is occurring concerning a subsea cable or renewable energy structure.

Reducing the risks whilst fishing

To reduce the risks of fishing near offshore structures, it is essential to be up to date with KIS-ORCA information. KIS-ORCA information is easy to install on your vessel's fishing plotter and ensures skippers are able to make informed decisions for their safety.

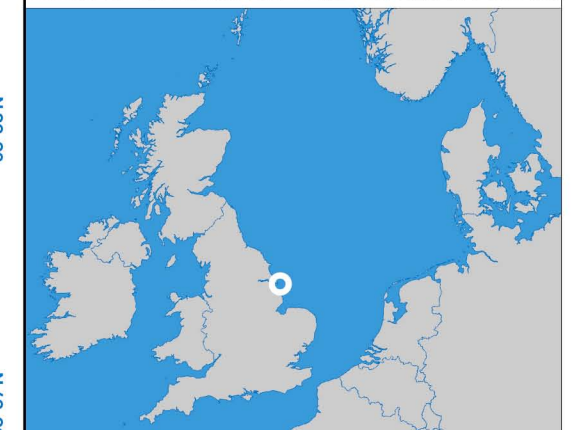
The closer to the surface a subsea cable is lifted when fouled by fishing gear, the more danger there is to the fishing vessel. In the interests of fishing safety and to prevent damage to subsea structures, fishermen are advised to exercise caution when fishing in the vicinity of subsea cables and renewable energy structures. Loss of gear, fishing time and catch can result if a trawler snags a subsea structure and there is serious risk of loss of life.



**Humber Gateway
Offshore Wind Farm**

- Site boundary
- Wind turbine
- Met Mast
- Substation
- Export cable
- Inter array cable

Grey coloured features displayed on this chart represent additional offshore wind farm structures. Visit www.kis-orca.org/map for more info.

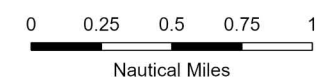


Projection: World_Mercator
Spheroid: GCS_WGS_1984
Datum: D_WGS_1984

This data is issued as a guide only. Seafish, cable / structure owners and Distributors accept no responsibility for any inaccuracies however caused.

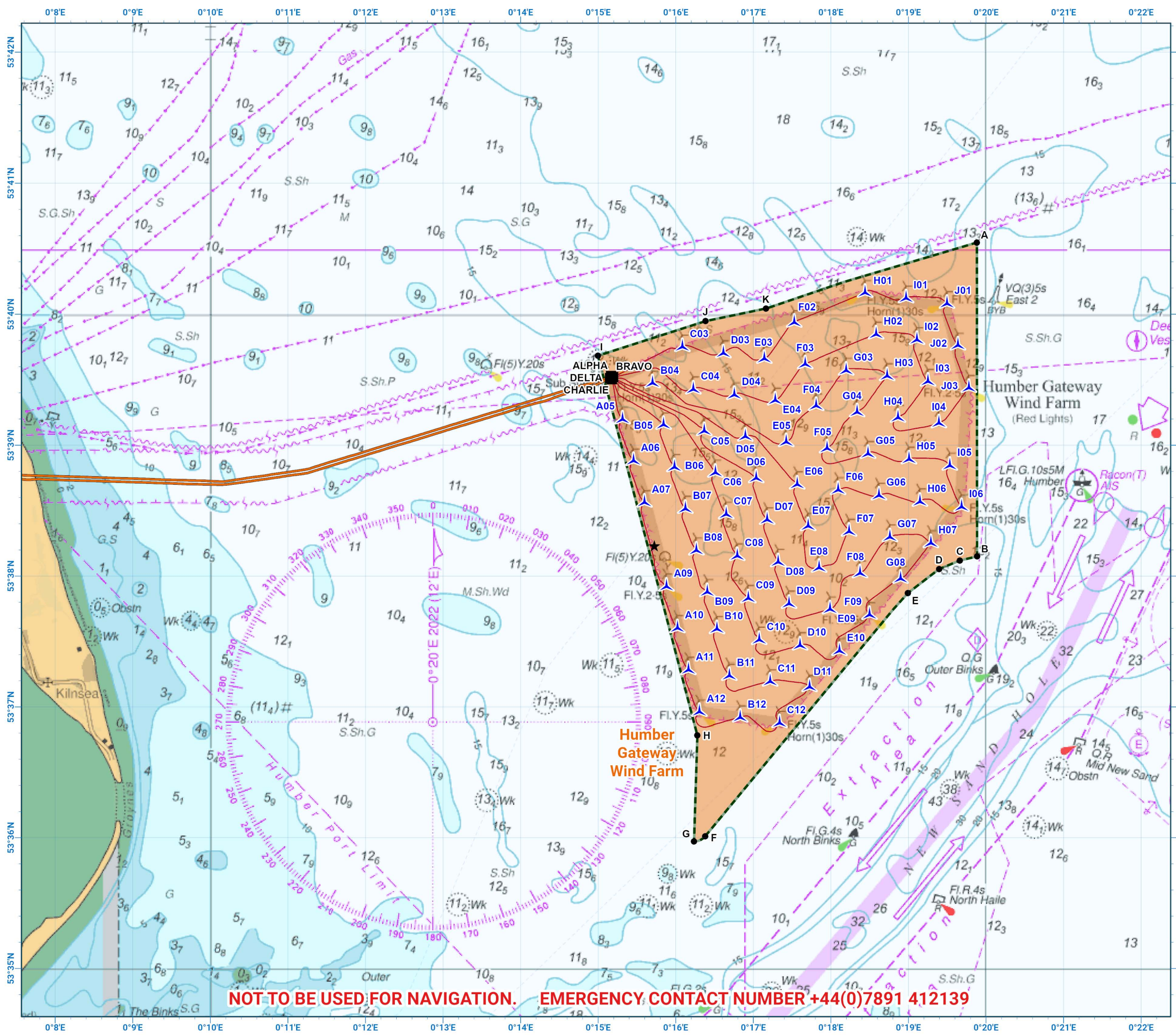
Please be aware that other structures & cables may exist in addition to those shown on this chart.

© British Crown Copyright, 2025/26.
All rights reserved.
Not to be used for Navigation.



Scale @ A3:
1:50,000

NOT TO BE USED FOR NAVIGATION. EMERGENCY CONTACT NUMBER +44(0)7891 412139



Asset locations

Extents		Extents		Infrastructure	
A	53°40.547'N 00°19.882'E	G	53°35.972'N 00°16.236'E	MET MAST	53°38.232'N 00°15.724'E
B	53°38.150'N 00°19.885'E	H	53°36.782'N 00°16.279'E	ALPHA	53°39.528'N 00°15.167'E
C	53°38.119'N 00°19.662'E	I	53°39.683'N 00°14.996'E	BRAVO	53°39.520'N 00°15.192'E
D	53°38.053'N 00°19.394'E	J	53°39.947'N 00°16.383'E	CHARLIE	53°39.504'N 00°15.176'E
E	53°37.871'N 00°18.994'E	K	53°40.043'N 00°17.162'E	DELTA	53°39.512'N 00°15.152'E
F	53°36.011'N 00°16.379'E				

Turbines		Turbines		Turbines	
A05	53°39.197'N 00°15.314'E	D07	53°38.430'N 00°17.179'E	H04	53°39.210'N 00°18.865'E
A06	53°38.880'N 00°15.456'E	D08	53°38.106'N 00°17.321'E	H05	53°38.892'N 00°19.007'E
A07	53°38.562'N 00°15.597'E	D09	53°37.788'N 00°17.461'E	H06	53°38.568'N 00°19.148'E
A09	53°37.920'N 00°15.880'E	D10	53°37.470'N 00°17.603'E	H07	53°38.252'N 00°19.289'E
A10	53°37.602'N 00°16.022'E	D11	53°37.152'N 00°17.725'E	I01	53°40.122'N 00°18.970'E
A11	53°37.282'N 00°16.163'E	E03	53°39.660'N 00°17.142'E	I02	53°39.804'N 00°19.110'E
A12	53°36.963'N 00°16.305'E	E04	53°39.342'N 00°17.283'E	I03	53°39.486'N 00°19.252'E
B04	53°39.474'N 00°15.700'E	E05	53°39.024'N 00°17.424'E	I04	53°39.168'N 00°19.393'E
B05	53°39.156'N 00°15.843'E	E06	53°38.700'N 00°17.566'E	I05	53°38.844'N 00°19.534'E
B06	53°38.832'N 00°15.983'E	E07	53°38.382'N 00°17.707'E	I06	53°38.528'N 00°19.685'E
B07	53°38.514'N 00°16.124'E	E08	53°38.064'N 00°17.848'E	J01	53°40.080'N 00°19.497'E
B08	53°38.196'N 00°16.266'E	E09	53°37.746'N 00°17.989'E	J02	53°39.762'N 00°19.638'E
B09	53°37.878'N 00°16.406'E	E10	53°37.428'N 00°18.111'E	J03	53°39.438'N 00°19.780'E
B10	53°37.595'N 00°16.531'E	F02	53°39.936'N 00°17.528'E		
B11	53°37.238'N 00°16.691'E	F03	53°39.618'N 00°17.669'E		
B12	53°36.919'N 00°16.831'E	F04	53°39.300'N 00°17.810'E		
C03	53°39.750'N 00°16.086'E	F05	53°38.976'N 00°17.951'E		
C04	53°39.426'N 00°16.227'E	F06	53°38.658'N 00°18.093'E		
C05	53°39.108'N 00°16.368'E	F07	53°38.340'N 00°18.234'E		
C06	53°38.790'N 00°16.511'E	F08	53°38.022'N 00°18.375'E		
C07	53°38.472'N 00°16.651'E	F09	53°37.704'N 00°18.498'E		
C08	53°38.154'N 00°16.793'E	G03	53°39.570'N 00°18.197'E		
C09	53°37.830'N 00°16.936'E	G04	53°39.252'N 00°18.338'E		
C10	53°37.512'N 00°17.076'E	G05	53°38.934'N 00°18.479'E		
C11	53°37.194'N 00°17.217'E	G06	53°38.616'N 00°18.620'E		
C12	53°36.877'N 00°17.338'E	G07	53°38.298'N 00°18.761'E		
D03	53°39.702'N 00°16.614'E	G08	53°37.980'N 00°18.899'E		
D04	53°39.384'N 00°16.755'E	H01	53°40.164'N 00°18.441'E		
D05	53°39.066'N 00°16.898'E	H02	53°39.846'N 00°18.583'E		
D06	53°38.748'N 00°17.037'E	H03	53°39.528'N 00°18.725'E		



Contact us

- ☎ +44(0)131 380 4545
- ✉ kingfisher@seafish.co.uk
- 🐦 @kingfisherinfo
- 📘 @KingfisherInformation
- 🌐 www.kis-orca.org

