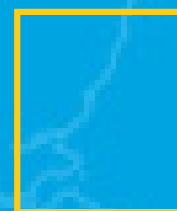




Kingfisher Wind farm Chart



Seagreen
Offshore wind farm
January 2026



Description

The Seagreen Wind Farm is operated by SSE Renewables. It is situated approximately 28 km from shore in the Northern North Sea, off the Angus coast. The wind farm is fully operational and has 114 turbines, a total capacity of 1,075 MW and covers an area of approximately 332 km².

Emergency procedures

1. If you suspect you have snagged a subsea cable or renewable energy structure, DO NOT endanger your vessel and crew by attempting to recover your gear.
2. Carefully plot your vessel's position as accurately as possible.
3. Advise the Coastguard of your situation, and call the 24 hour Emergency Number and state that an incident is occurring concerning a subsea cable or renewable energy structure.

Reducing the risks whilst fishing

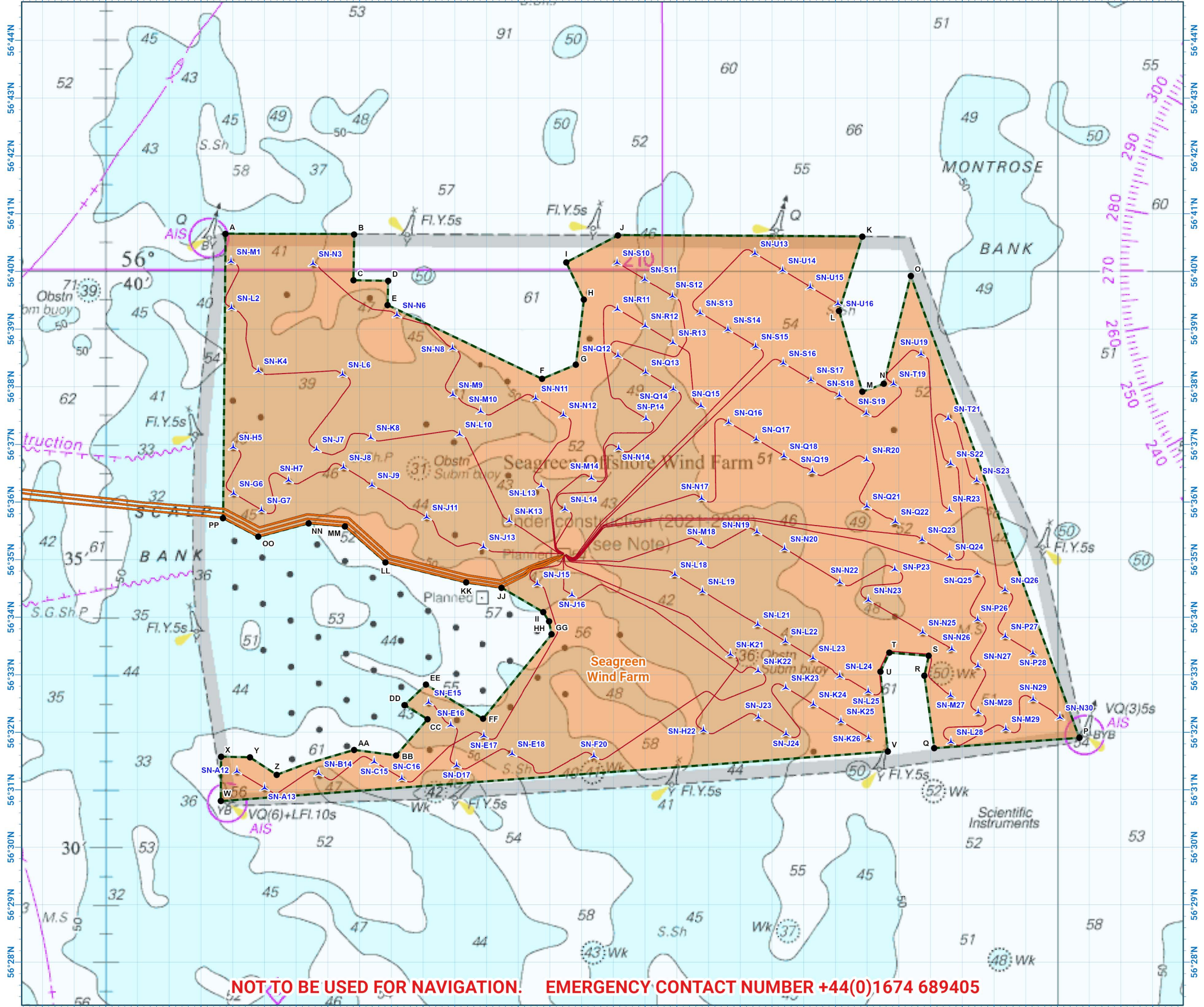
To reduce the risks of fishing near offshore structures, it is essential to be up to date with KIS-ORCA information. KIS-ORCA information is easy to install on your vessel's fishing plotter and ensures skippers are able to make informed decisions for their safety.

The closer to the surface a subsea cable is lifted when fouled by fishing gear, the more danger there is to the fishing vessel. In the interests of fishing safety and to prevent damage to subsea structures, fishermen are advised to exercise caution when fishing in the vicinity of subsea cables and renewable energy structures. Loss of gear, fishing time and catch can result if a trawler snags a subsea structure and there is serious risk of loss of life.



Emergency contact number
+44(0)1674 689405

2°2'W 2°1'W 2°W 1°59'W 1°58'W 1°57'W 1°56'W 1°55'W 1°54'W 1°53'W 1°52'W 1°51'W 1°50'W 1°49'W 1°48'W 1°47'W 1°46'W 1°45'W 1°44'W 1°43'W 1°42'W 1°41'W 1°40'W 1°39'W 1°38'W 1°37'W 1°36'W 1°35'W 1°34'W 1°33'W 1°32'W 1°31'W 1°30'W 1°29'W 1°28'W 1°27'W



NOT TO BE USED FOR NAVIGATION. EMERGENCY CONTACT NUMBER +44(0)1674 689405

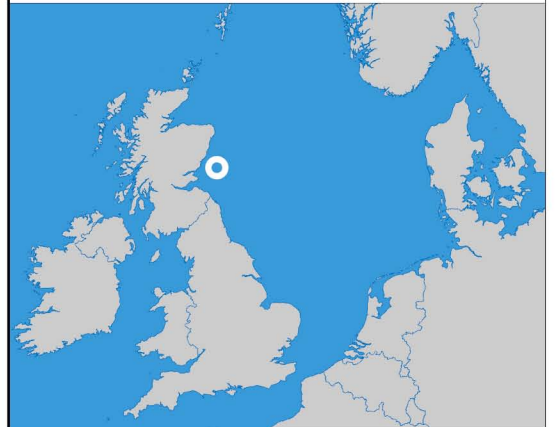
seafish
Kingfisher
Information Service

SSE
Renewables

**Seagreen
Offshore Wind Farm**

- Site boundary
- Export cable
- Wind turbine
- Inter array cable

Grey coloured features displayed on this chart represent additional offshore wind farm structures. Visit www.kis-orca.org/map for more info.

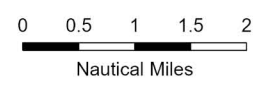


Projection: World_Mercator
Spheroid: GCS_WGS_1984
Datum: D_WGS_1984

This data is issued as a guide only. Seafish, cable / structure owners and Distributors accept no responsibility for any inaccuracies however caused.

Please be aware that other structures & cables may exist in addition to those shown on this chart.

© British Crown Copyright, 2025/26.
All rights reserved.
Not to be used for Navigation.



Scale @ A3:
1:125,000

Asset locations

Extents		Extents		Extents	
A	56°40.648'N 01°56.226'W	O	56°39.923'N 01°34.627'W	CC	56°32.227'N 01°49.859'W
B	56°40.639'N 01°52.170'W	P	56°31.903'N 01°29.311'W	DD	56°32.474'N 01°50.582'W
C	56°39.846'N 01°52.194'W	Q	56°31.724'N 01°33.882'W	EE	56°32.827'N 01°49.906'W
D	56°39.836'N 01°51.101'W	R	56°32.983'N 01°34.195'W	FF	56°32.236'N 01°48.110'W
E	56°39.417'N 01°51.114'W	S	56°33.329'N 01°34.059'W	GG	56°33.702'N 01°45.944'W
F	56°38.138'N 01°46.249'W	T	56°33.383'N 01°35.298'W	HH	56°33.926'N 01°46.030'W
G	56°38.383'N 01°45.181'W	U	56°33.051'N 01°35.583'W	II	56°34.090'N 01°46.210'W
H	56°39.512'N 01°44.928'W	V	56°31.666'N 01°35.352'W	JJ	56°34.511'N 01°47.527'W
I	56°40.157'N 01°45.487'W	W	56°30.803'N 01°56.378'W	KK	56°34.603'N 01°48.640'W
J	56°40.621'N 01°43.862'W	X	56°31.576'N 01°56.366'W	LL	56°34.954'N 01°51.181'W
K	56°40.604'N 01°36.152'W	Y	56°31.565'N 01°55.457'W	MM	56°35.578'N 01°52.467'W
L	56°39.317'N 01°36.884'W	Z	56°31.261'N 01°54.612'W	NN	56°35.631'N 01°53.604'W
M	56°37.913'N 01°36.151'W	AA	56°31.694'N 01°52.171'W	OO	56°35.399'N 01°55.195'W
N	56°38.053'N 01°35.475'W	BB	56°31.598'N 01°50.846'W	PP	56°35.719'N 01°56.302'W



Contact us

- +44(0)131 380 4545
- kingfisher@seafish.co.uk
- @kingfisherinfo
- @KingfisherInformation
- www.kis-orca.org



Asset locations

Turbines		Turbines		Turbines	
SN-A12	56°31.318'N 01°55.868'W	SN-L2	56°39.367'N 01°56.036'W	SN-Q14	56°37.960'N 01°42.111'W
SN-A13	56°31.030'N 01°54.994'W	SN-L21	56°33.870'N 01°39.448'W	SN-Q15	56°37.669'N 01°41.237'W
SN-B14	56°31.280'N 01°53.290'W	SN-L22	56°33.579'N 01°38.577'W	SN-Q16	56°37.379'N 01°40.365'W
SN-C15	56°31.485'N 01°51.540'W	SN-L23	56°33.289'N 01°37.707'W	SN-Q17	56°37.089'N 01°39.493'W
SN-C16	56°31.195'N 01°50.668'W	SN-L24	56°32.976'N 01°36.861'W	SN-Q18	56°36.798'N 01°38.620'W
SN-D17	56°31.422'N 01°48.940'W	SN-L25	56°32.707'N 01°35.967'W	SN-Q19	56°36.530'N 01°37.726'W
SN-E15	56°32.517'N 01°49.827'W	SN-L28	56°31.835'N 01°33.358'W	SN-Q21	56°35.927'N 01°36.006'W
SN-E16	56°32.125'N 01°49.125'W	SN-L6	56°38.213'N 01°52.538'W	SN-Q22	56°35.658'N 01°35.111'W
SN-E17	56°31.938'N 01°48.083'W	SN-M1	56°40.172'N 01°56.052'W	SN-Q23	56°35.346'N 01°34.263'W
SN-E18	56°31.626'N 01°47.190'W	SN-M10	56°37.573'N 01°48.183'W	SN-Q24	56°35.055'N 01°33.395'W
SN-F20	56°31.585'N 01°44.613'W	SN-M14	56°36.414'N 01°44.690'W	SN-Q25	56°34.764'N 01°32.523'W
SN-G6	56°36.147'N 01°55.968'W	SN-M18	56°35.278'N 01°41.226'W	SN-Q26	56°34.472'N 01°31.653'W
SN-G7	56°35.859'N 01°55.095'W	SN-M27	56°32.640'N 01°33.367'W	SN-R11	56°39.344'N 01°43.870'W
SN-H22	56°32.035'N 01°41.156'W	SN-M28	56°32.349'N 01°32.497'W	SN-R12	56°39.054'N 01°42.997'W
SN-H5	56°36.952'N 01°55.984'W	SN-M29	56°32.057'N 01°31.628'W	SN-R13	56°38.764'N 01°42.122'W
SN-H7	56°36.375'N 01°54.237'W	SN-M9	56°37.861'N 01°49.056'W	SN-R20	56°36.731'N 01°36.016'W
SN-J11	56°35.736'N 01°49.886'W	SN-N11	56°37.799'N 01°46.450'W	SN-R23	56°35.859'N 01°33.403'W
SN-J13	56°35.220'N 01°48.096'W	SN-N12	56°37.509'N 01°45.577'W	SN-S10	56°40.149'N 01°43.882'W
SN-J15	56°34.579'N 01°46.396'W	SN-N14	56°36.930'N 01°43.831'W	SN-S11	56°39.860'N 01°43.008'W
SN-J16	56°34.385'N 01°45.304'W	SN-N17	56°36.060'N 01°41.215'W	SN-S12	56°39.569'N 01°42.134'W
SN-J23	56°32.260'N 01°39.427'W	SN-N19	56°35.480'N 01°39.471'W	SN-S13	56°39.280'N 01°41.263'W
SN-J24	56°31.970'N 01°38.557'W	SN-N20	56°35.189'N 01°38.600'W	SN-S14	56°38.989'N 01°40.389'W
SN-J7	56°36.914'N 01°53.354'W	SN-N22	56°34.608'N 01°36.858'W	SN-S15	56°38.698'N 01°39.515'W
SN-J8	56°36.603'N 01°52.506'W	SN-N23	56°34.293'N 01°35.963'W	SN-S16	56°38.409'N 01°38.643'W
SN-J9	56°36.291'N 01°51.610'W	SN-N25	56°33.735'N 01°34.246'W	SN-S17	56°38.118'N 01°37.770'W
SN-K13	56°35.672'N 01°47.281'W	SN-N26	56°33.445'N 01°33.329'W	SN-S18	56°37.850'N 01°36.874'W
SN-K21	56°33.355'N 01°40.308'W	SN-N27	56°33.153'N 01°32.505'W	SN-S19	56°37.536'N 01°36.027'W
SN-K22	56°33.065'N 01°39.438'W	SN-N29	56°32.571'N 01°30.767'W	SN-S22	56°36.664'N 01°33.365'W
SN-K23	56°32.774'N 01°38.567'W	SN-N3	56°40.134'N 01°53.467'W	SN-S23	56°36.373'N 01°32.542'W
SN-K24	56°32.484'N 01°37.696'W	SN-N30	56°32.258'N 01°29.922'W	SN-T19	56°38.051'N 01°35.165'W
SN-K25	56°32.193'N 01°36.826'W	SN-N6	56°39.244'N 01°50.820'W	SN-T21	56°37.447'N 01°33.445'W
SN-K26	56°31.903'N 01°35.957'W	SN-N8	56°38.667'N 01°49.071'W	SN-U13	56°40.308'N 01°39.538'W
SN-K4	56°38.274'N 01°55.191'W	SN-P14	56°37.444'N 01°42.971'W	SN-U14	56°40.018'N 01°38.665'W
SN-K8	56°37.118'N 01°51.648'W	SN-P23	56°34.832'N 01°35.126'W	SN-U15	56°39.728'N 01°37.792'W
SN-L10	56°37.174'N 01°48.846'W	SN-P26	56°33.959'N 01°32.514'W	SN-U16	56°39.438'N 01°36.919'W
SN-L13	56°36.279'N 01°46.272'W	SN-P27	56°33.667'N 01°31.645'W	SN-U19	56°38.565'N 01°34.302'W
SN-L14	56°35.876'N 01°45.527'W	SN-P28	56°33.376'N 01°30.775'W		
SN-L18	56°34.740'N 01°42.063'W	SN-Q12	56°38.539'N 01°43.857'W		
SN-L19	56°34.449'N 01°41.192'W	SN-Q13	56°38.250'N 01°42.983'W		



Contact us

-  +44(0)131 380 4545
-  kingfisher@seafish.co.uk
-  @kingfisherinfo
-  @KingfisherInformation
-  www.kis-orca.org

