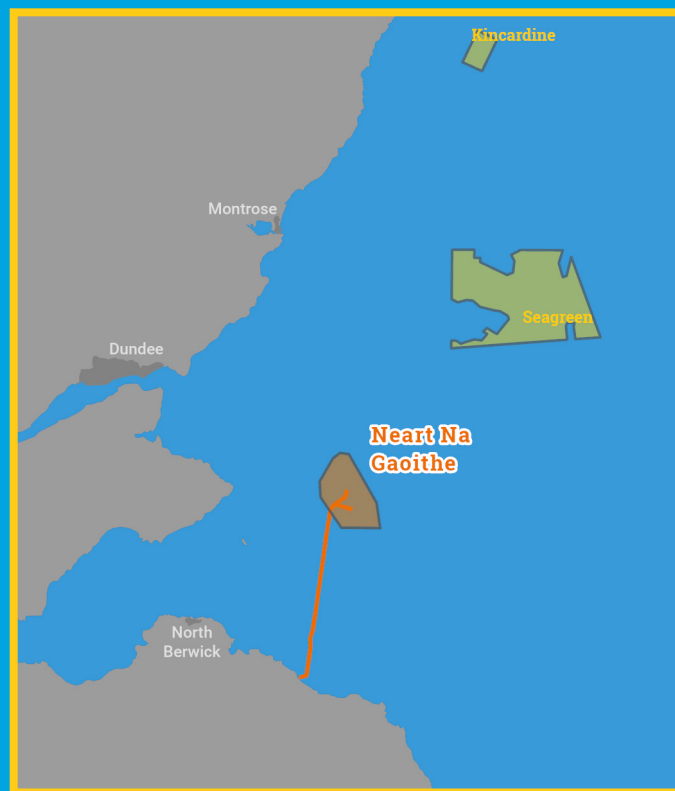
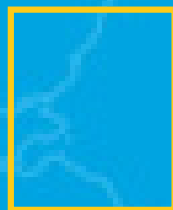




Kingfisher Wind farm Chart



Neart Na Gaoithe
Offshore wind farm
January 2026



Description

The Neart Na Gaoithe Wind Farm is operated by EDF NNG. It is situated approximately 15 km from shore in the Northern North Sea, off the coast of Fife. The wind farm is fully operational and has 57 turbines, a total capacity of 450 MW and covers an area of approximately 105 km².

Emergency procedures

1. If you suspect you have snagged a subsea cable or renewable energy structure, DO NOT endanger your vessel and crew by attempting to recover your gear.
2. Carefully plot your vessel's position as accurately as possible.
3. Advise the Coastguard of your situation, and call the 24 hour Emergency Number and state that an incident is occurring concerning a subsea cable or renewable energy structure.

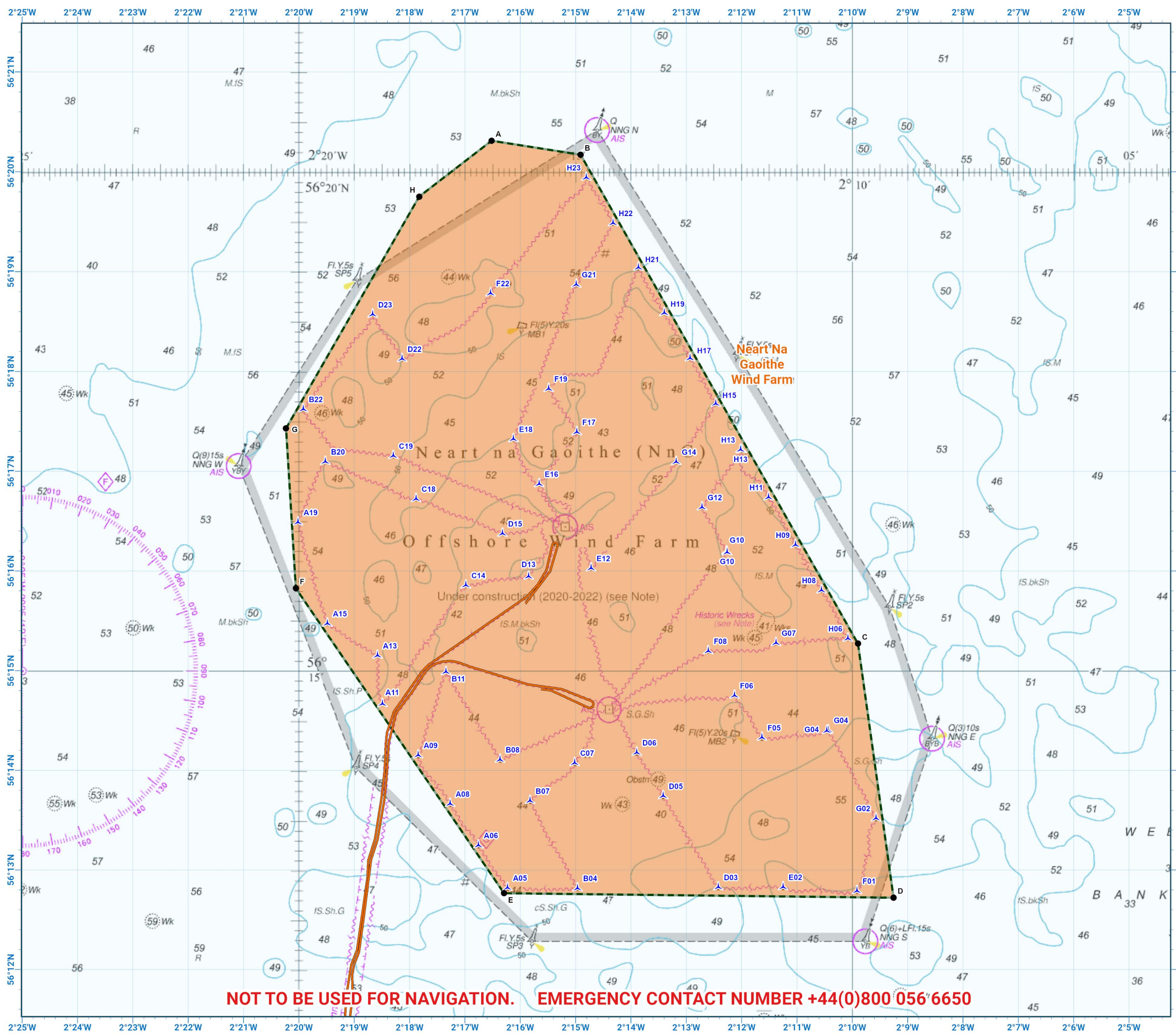
Reducing the risks whilst fishing

To reduce the risks of fishing near offshore structures, it is essential to be up to date with KIS-ORCA information. KIS-ORCA information is easy to install on your vessel's fishing plotter and ensures skippers are able to make informed decisions for their safety.

The closer to the surface a subsea cable is lifted when fouled by fishing gear, the more danger there is to the fishing vessel. In the interests of fishing safety and to prevent damage to subsea structures, fishermen are advised to exercise caution when fishing in the vicinity of subsea cables and renewable energy structures. Loss of gear, fishing time and catch can result if a trawler snags a subsea structure and there is serious risk of loss of life.



Emergency contact number
+44(0)800 056 6650



Neart Na Gaoithe Offshore Wind Farm

- Site boundary
- Export cable
- Wind turbine

Grey coloured features displayed on this chart represent additional offshore wind farm structures. Visit www.kis-orca.org/map for more info.

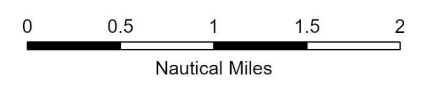


Projection: World_Mercator
 Spheroid: GCS_WGS_1984
 Datum: D_WGS_1984

This data is issued as a guide only. Seafish, cable / structure owners and Distributors accept no responsibility for any inaccuracies however caused.

Please be aware that other structures & cables may exist in addition to those shown on this chart.

© British Crown Copyright, 2025/26. All rights reserved. Not to be used for Navigation.



Scale @ A3:
1:75,000

Asset locations

Extents		Extents	
A	56°20.311'N 02°16.518'W	E	56°12.766'N 02°16.293'W
B	56°20.171'N 02°14.910'W	F	56°15.826'N 02°20.055'W
C	56°15.271'N 02°09.898'W	G	56°17.430'N 02°20.232'W
D	56°12.721'N 02°09.255'W	H	56°19.752'N 02°17.826'W

Turbines		Turbines	
A05	56°12.822'N 02°16.231'W	F01	56°12.790'N 02°09.915'W
A06	56°13.248'N 02°16.755'W	F05	56°14.330'N 02°11.632'W
A08	56°13.665'N 02°17.267'W	F06	56°14.751'N 02°12.129'W
A09	56°14.153'N 02°17.845'W	F08	56°15.198'N 02°12.603'W
A11	56°14.668'N 02°18.489'W	F17	56°17.394'N 02°14.978'W
A13	56°15.153'N 02°18.580'W	F19	56°17.828'N 02°15.487'W
A15	56°15.474'N 02°19.484'W	F22	56°18.785'N 02°16.536'W
A19	56°16.490'N 02°20.015'W	G02	56°13.520'N 02°09.572'W
B04	56°12.817'N 02°14.964'W	G04	56°14.397'N 02°10.461'W
B07	56°13.695'N 02°15.822'W	G04	56°14.405'N 02°10.435'W
B08	56°14.109'N 02°16.365'W	G07	56°15.279'N 02°11.379'W
B11	56°14.989'N 02°17.341'W	G10	56°16.197'N 02°12.270'W
B20	56°17.097'N 02°19.521'W	G10	56°16.189'N 02°12.262'W
B22	56°17.623'N 02°19.921'W	G12	56°16.640'N 02°12.715'W
C07	56°14.076'N 02°15.017'W	G14	56°17.095'N 02°13.181'W
C14	56°15.858'N 02°16.984'W	G21	56°18.873'N 02°14.988'W
C18	56°16.725'N 02°17.882'W	H06	56°15.324'N 02°10.079'W
C19	56°17.155'N 02°18.293'W	H08	56°15.808'N 02°10.555'W
D03	56°12.828'N 02°12.421'W	H09	56°16.263'N 02°11.027'W
D05	56°13.744'N 02°13.417'W	H11	56°16.740'N 02°11.513'W
D06	56°14.179'N 02°13.894'W	H13	56°17.217'N 02°12.017'W
D13	56°15.946'N 02°15.848'W	H13	56°17.214'N 02°11.997'W
D15	56°16.376'N 02°16.321'W	H15	56°17.677'N 02°12.466'W
D22	56°18.127'N 02°18.135'W	H17	56°18.134'N 02°12.932'W
D23	56°18.572'N 02°18.666'W	H19	56°18.588'N 02°13.397'W
E02	56°12.829'N 02°11.251'W	H21	56°19.043'N 02°13.865'W
E12	56°16.029'N 02°14.720'W	H22	56°19.488'N 02°14.322'W
E16	56°16.874'N 02°15.658'W	H23	56°19.943'N 02°14.806'W
E18	56°17.324'N 02°16.122'W		



Contact us

- ☎ +44(0)131 380 4545
- ✉ kingfisher@seafish.co.uk
- 🐦 @kingfisherinfo
- 📘 @KingfisherInformation
- 🌐 www.kis-orca.org

