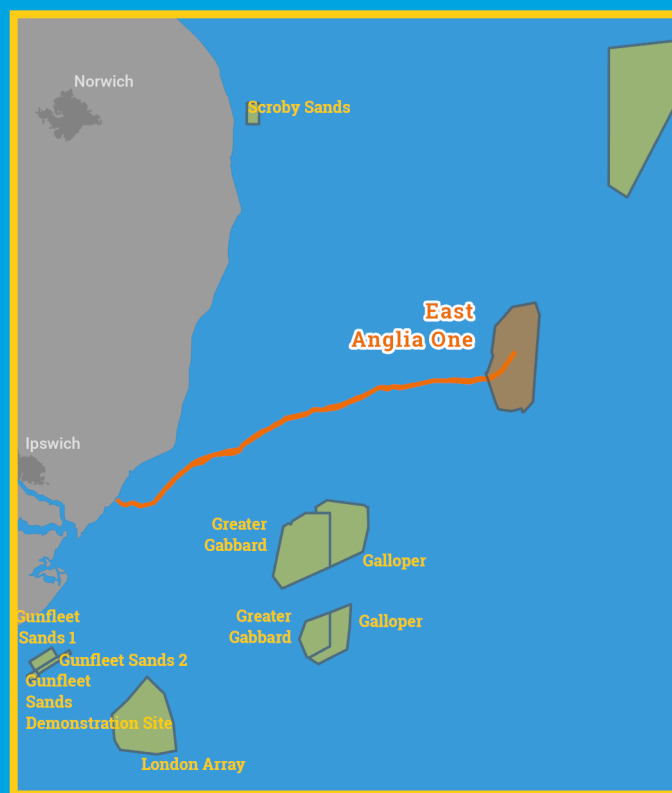




# Kingfisher Wind farm Chart



**East Anglia One**  
**Offshore wind farm**  
January 2026



**Emergency contact number**  
**+44(0)800 195009**

## Description

The East Anglia One Wind Farm is operated by Scottish Power Renewables. It is situated approximately 49 km from shore in the Southern North Sea, off the East coast of Suffolk. The wind farm is fully operational and has 102 turbines, a total capacity of 714 MW and covers an area of approximately 151 km<sup>2</sup>.

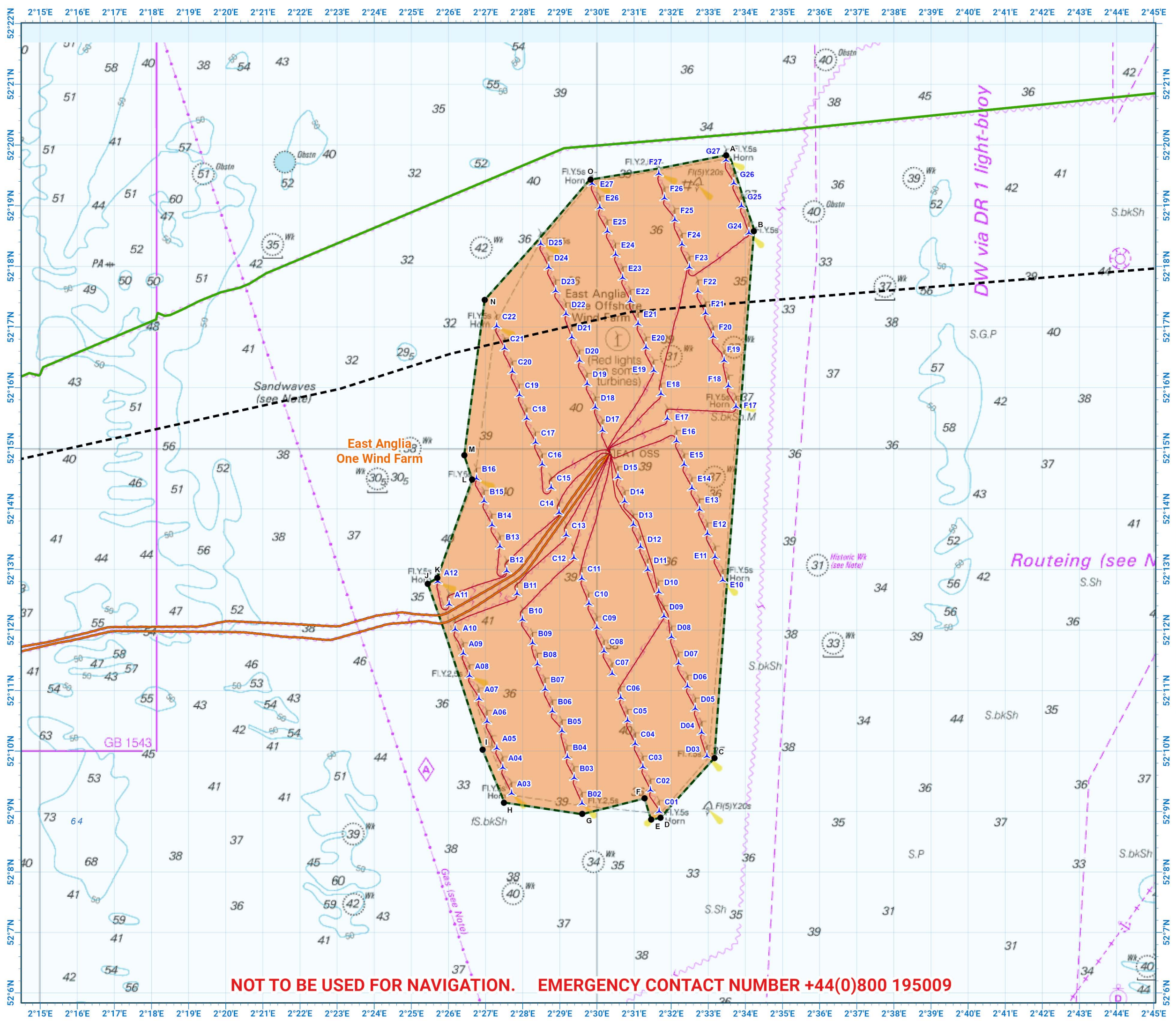
## Emergency procedures

1. If you suspect you have snagged a subsea cable or renewable energy structure, DO NOT endanger your vessel and crew by attempting to recover your gear.
2. Carefully plot your vessel's position as accurately as possible.
3. Advise the Coastguard of your situation, and call the 24 hour Emergency Number and state that an incident is occurring concerning a subsea cable or renewable energy structure.

## Reducing the risks whilst fishing

To reduce the risks of fishing near offshore structures, it is essential to be up to date with KIS-ORCA information. KIS-ORCA information is easy to install on your vessel's fishing plotter and ensures skippers are able to make informed decisions for their safety.

The closer to the surface a subsea cable is lifted when fouled by fishing gear, the more danger there is to the fishing vessel. In the interests of fishing safety and to prevent damage to subsea structures, fishermen are advised to exercise caution when fishing in the vicinity of subsea cables and renewable energy structures. Loss of gear, fishing time and catch can result if a trawler snags a subsea structure and there is serious risk of loss of life.



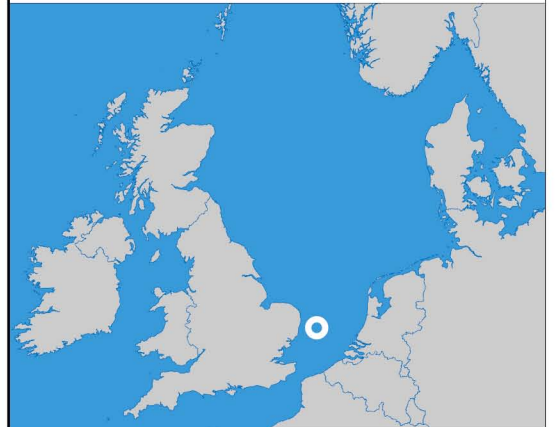
**NOT TO BE USED FOR NAVIGATION. EMERGENCY CONTACT NUMBER +44(0)800 195009**



**East Anglia One  
Offshore Wind Farm**

- Site boundary
- Export cable
- Wind turbine
- Inter array cable
- Telecomms cable
- Out of Use cable

Grey coloured features displayed on this chart represent additional offshore wind farm structures. Visit [www.kis-orca.org/map](http://www.kis-orca.org/map) for more info.

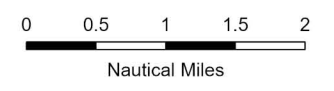


Projection: World\_Mercator  
Spheroid: GCS\_WGS\_1984  
Datum: D\_WGS\_1984

This data is issued as a guide only. Seafish, cable / structure owners and Distributors accept no responsibility for any inaccuracies however caused.

Please be aware that other structures & cables may exist in addition to those shown on this chart.

© British Crown Copyright, 2025/26.  
All rights reserved.  
Not to be used for Navigation.



Scale @ A3:  
1:100,000

# Asset locations

Extents		Extents		Infrastructure	
A	52°19.831'N 02°33.480'E	I	52°10.022'N 02°26.921'E	MET MAST	52°12.863'N 02°30.111'E
B	52°18.579'N 02°34.229'E	J	52°12.763'N 02°25.445'E		
C	52°09.883'N 02°33.164'E	K	52°12.861'N 02°25.702'E		
D	52°08.898'N 02°31.711'E	L	52°14.484'N 02°26.639'E		
E	52°08.867'N 02°31.462'E	M	52°14.885'N 02°26.424'E		
F	52°09.217'N 02°31.284'E	N	52°17.446'N 02°26.975'E		
G	52°08.961'N 02°29.603'E	O	52°19.430'N 02°29.827'E		
H	52°09.147'N 02°27.499'E				

Turbines		Turbines		Turbines	
A03	52°09.302'N 02°27.700'E	C02	52°09.354'N 02°31.445'E	D08	52°11.888'N 02°32.011'E
A04	52°09.727'N 02°27.464'E	C03	52°09.738'N 02°31.239'E	D09	52°12.227'N 02°31.806'E
A05	52°10.050'N 02°27.302'E	C04	52°10.122'N 02°31.032'E	D10	52°12.631'N 02°31.666'E
A06	52°10.488'N 02°27.042'E	C05	52°10.506'N 02°30.826'E	D11	52°12.999'N 02°31.372'E
A07	52°10.865'N 02°26.823'E	C06	52°10.884'N 02°30.640'E	D12	52°13.376'N 02°31.175'E
A08	52°11.246'N 02°26.568'E	C07	52°11.280'N 02°30.412'E	D13	52°13.742'N 02°30.982'E
A09	52°11.615'N 02°26.401'E	C08	52°11.651'N 02°30.192'E	D14	52°14.127'N 02°30.749'E
A10	52°12.011'N 02°26.181'E	C09	52°12.043'N 02°30.000'E	D15	52°14.528'N 02°30.568'E
A11	52°12.428'N 02°26.022'E	C10	52°12.437'N 02°29.784'E	D17	52°15.296'N 02°30.154'E
A12	52°12.801'N 02°25.714'E	C11	52°12.854'N 02°29.595'E	D18	52°15.677'N 02°29.958'E
B02	52°09.135'N 02°29.598'E	C12	52°13.195'N 02°29.379'E	D19	52°16.065'N 02°29.740'E
B03	52°09.557'N 02°29.387'E	C13	52°13.570'N 02°29.174'E	D20	52°16.449'N 02°29.533'E
B04	52°09.904'N 02°29.203'E	C14	52°13.936'N 02°28.981'E	D21	52°16.833'N 02°29.326'E
B05	52°10.333'N 02°29.058'E	C15	52°14.353'N 02°28.770'E	D22	52°17.216'N 02°29.167'E
B06	52°10.660'N 02°28.800'E	C16	52°14.737'N 02°28.528'E	D23	52°17.595'N 02°28.890'E
B07	52°11.024'N 02°28.607'E	C17	52°15.098'N 02°28.348'E	D24	52°17.985'N 02°28.704'E
B08	52°11.438'N 02°28.400'E	C18	52°15.494'N 02°28.110'E	D25	52°18.373'N 02°28.489'E
B09	52°11.786'N 02°28.268'E	C19	52°15.884'N 02°27.912'E	E10	52°12.823'N 02°33.390'E
B10	52°12.175'N 02°27.996'E	C20	52°16.268'N 02°27.722'E	E11	52°13.207'N 02°33.183'E
B11	52°12.601'N 02°27.850'E	C21	52°16.652'N 02°27.515'E	E12	52°13.592'N 02°32.977'E
B12	52°12.977'N 02°27.574'E	C22	52°17.016'N 02°27.300'E	E13	52°13.992'N 02°32.767'E
B13	52°13.381'N 02°27.389'E	D03	52°09.917'N 02°32.966'E	E14	52°14.344'N 02°32.561'E
B14	52°13.736'N 02°27.174'E	D04	52°10.308'N 02°32.822'E	E15	52°14.735'N 02°32.351'E
B15	52°14.129'N 02°26.962'E	D05	52°10.701'N 02°32.651'E	E16	52°15.122'N 02°32.145'E
B16	52°14.503'N 02°26.755'E	D06	52°11.072'N 02°32.441'E	E17	52°15.493'N 02°31.899'E
C01	52°09.003'N 02°31.678'E	D07	52°11.451'N 02°32.200'E	D07	52°11.451'N 02°32.200'E



## Contact us

- ☎ +44(0)131 380 4545
- ✉ [kingfisher@seafish.co.uk](mailto:kingfisher@seafish.co.uk)
- 🐦 @kingfisherinfo
- 📘 @KingfisherInformation
- 🌐 [www.kis-orca.org](http://www.kis-orca.org)



# Asset locations

## Turbines

E18	52°15.900'N 02°31.728'E
E19	52°16.282'N 02°31.534'E
E20	52°16.665'N 02°31.324'E
E21	52°17.055'N 02°31.108'E
E22	52°17.431'N 02°30.902'E
E23	52°17.813'N 02°30.695'E
E24	52°18.196'N 02°30.502'E
E25	52°18.578'N 02°30.282'E
E26	52°18.973'N 02°30.080'E
E27	52°19.364'N 02°29.873'E
F17	52°15.687'N 02°33.747'E
F18	52°16.031'N 02°33.542'E
F19	52°16.449'N 02°33.428'E
F20	52°16.845'N 02°33.135'E
F21	52°17.229'N 02°32.928'E
F22	52°17.592'N 02°32.721'E
F23	52°17.988'N 02°32.493'E
F24	52°18.365'N 02°32.291'E
F25	52°18.766'N 02°32.101'E
F26	52°19.126'N 02°31.821'E
F27	52°19.527'N 02°31.667'E
G24	52°18.552'N 02°34.098'E
G25	52°18.997'N 02°33.895'E
G26	52°19.373'N 02°33.689'E
G27	52°19.750'N 02°33.481'E



## Contact us

- +44(0)131 380 4545
- kingfisher@seafish.co.uk
- @kingfisherinfo
- @KingfisherInformation
- www.kis-orca.org

