



Kingfisher Wind farm Chart



Borssele 1 & 2
Offshore wind farm
January 2026



Emergency contact number
+44(0)8455 441037

Description

The Borssele 1 & 2 Wind Farm is operated by Orsted. It is situated approximately 28 km from shore in the Southern North Sea, off the coast of Belgium and Germany. The wind farm is fully operational and has 94 turbines, a total capacity of 752 MW and covers an area of approximately 292 km².

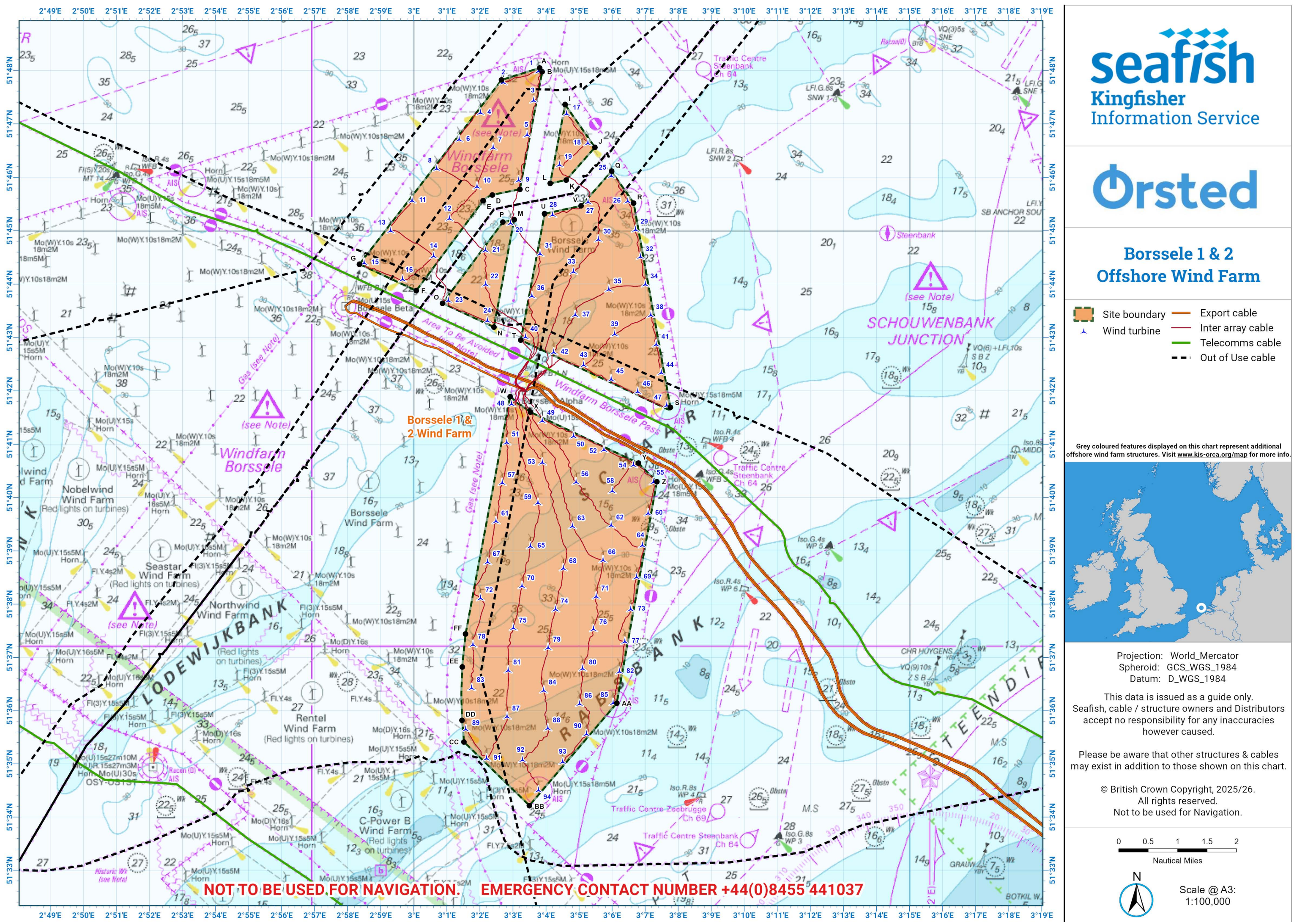
Emergency procedures

1. If you suspect you have snagged a subsea cable or renewable energy structure, DO NOT endanger your vessel and crew by attempting to recover your gear.
2. Carefully plot your vessel's position as accurately as possible.
3. Advise the Coastguard of your situation, and call the 24 hour Emergency Number and state that an incident is occurring concerning a subsea cable or renewable energy structure.

Reducing the risks whilst fishing

To reduce the risks of fishing near offshore structures, it is essential to be up to date with KIS-ORCA information. KIS-ORCA information is easy to install on your vessel's fishing plotter and ensures skippers are able to make informed decisions for their safety.

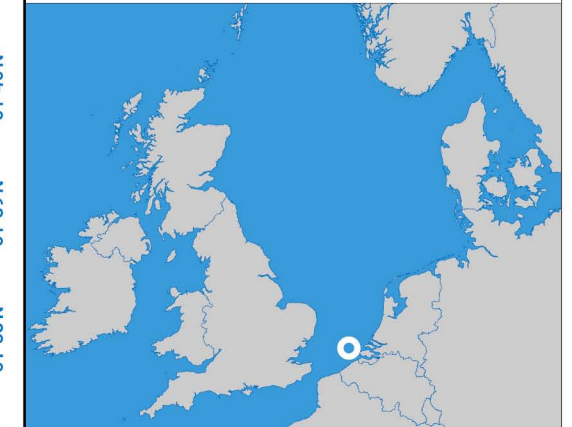
The closer to the surface a subsea cable is lifted when fouled by fishing gear, the more danger there is to the fishing vessel. In the interests of fishing safety and to prevent damage to subsea structures, fishermen are advised to exercise caution when fishing in the vicinity of subsea cables and renewable energy structures. Loss of gear, fishing time and catch can result if a trawler snags a subsea structure and there is serious risk of loss of life.



**Borssele 1 & 2
Offshore Wind Farm**

- Site boundary
- Wind turbine
- Export cable
- Inter array cable
- Telecomms cable
- Out of Use cable

Grey coloured features displayed on this chart represent additional offshore wind farm structures. Visit www.kis-orca.org/map for more info.

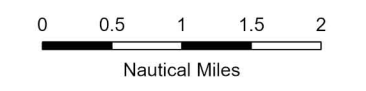


Projection: World_Mercator
Spheroid: GCS_WGS_1984
Datum: D_WGS_1984

This data is issued as a guide only. Seafish, cable / structure owners and Distributors accept no responsibility for any inaccuracies however caused.

Please be aware that other structures & cables may exist in addition to those shown on this chart.

© British Crown Copyright, 2025/26.
All rights reserved.
Not to be used for Navigation.



Scale @ A3:
1:100,000

NOT TO BE USED FOR NAVIGATION. EMERGENCY CONTACT NUMBER +44(0)8455 441037

Asset locations

Extents

A	51°48.045'N 03°03.806'E
B	51°47.976'N 03°03.884'E
C	51°45.776'N 03°03.210'E
D	51°45.671'N 03°02.376'E
E	51°45.563'N 03°02.099'E
F	51°43.877'N 03°00.074'E
G	51°44.373'N 02°58.358'E
H	51°47.820'N 03°02.656'E
I	51°47.360'N 03°04.579'E
J	51°46.560'N 03°05.481'E
K	51°45.949'N 03°04.612'E

Extents

L	51°45.886'N 03°04.127'E
M	51°45.208'N 03°03.036'E
N	51°43.195'N 03°02.424'E
O	51°43.642'N 03°00.872'E
P	51°45.162'N 03°02.696'E
Q	51°46.113'N 03°05.984'E
R	51°45.519'N 03°06.653'E
S	51°41.691'N 03°07.764'E
T	51°42.951'N 03°03.237'E
U	51°45.318'N 03°03.960'E
V	51°45.465'N 03°05.062'E

Extents

W	51°41.888'N 03°02.914'E
X	51°41.603'N 03°03.528'E
Y	51°40.644'N 03°06.798'E
Z	51°40.296'N 03°07.355'E
AA	51°36.138'N 03°06.140'E
BB	51°34.217'N 03°03.498'E
CC	51°35.412'N 03°01.519'E
DD	51°35.819'N 03°01.459'E
EE	51°36.819'N 03°01.463'E
FF	51°37.439'N 03°01.567'E

Turbines

1	51°47.982'N 03°03.771'E
2	51°47.773'N 03°02.709'E
3	51°47.432'N 03°03.629'E
4	51°47.205'N 03°02.017'E
5	51°46.789'N 03°03.432'E
6	51°46.704'N 03°01.374'E
7	51°46.553'N 03°02.403'E
8	51°46.158'N 03°00.695'E
9	51°45.941'N 03°03.172'E
10	51°45.821'N 03°01.912'E
11	51°45.561'N 02°59.948'E
12	51°45.224'N 03°01.080'E
13	51°44.997'N 02°59.299'E
14	51°44.521'N 03°00.600'E
15	51°44.395'N 02°58.501'E
16	51°44.086'N 02°59.662'E
17	51°47.185'N 03°04.623'E
18	51°46.635'N 03°05.269'E
19	51°46.231'N 03°04.409'E
20	51°45.138'N 03°02.926'E
21	51°44.630'N 03°02.165'E
22	51°43.992'N 03°02.178'E
23	51°43.689'N 03°01.044'E
24	51°43.311'N 03°02.228'E

Turbines

25	51°46.026'N 03°05.976'E
26	51°45.549'N 03°06.477'E
27	51°45.533'N 03°05.275'E
28	51°45.295'N 03°04.202'E
29	51°45.017'N 03°06.709'E
30	51°44.832'N 03°05.585'E
31	51°44.565'N 03°03.818'E
32	51°44.510'N 03°06.858'E
33	51°44.228'N 03°04.832'E
34	51°43.992'N 03°07.008'E
35	51°43.897'N 03°05.903'E
36	51°43.774'N 03°03.574'E
37	51°43.418'N 03°04.884'E
38	51°43.416'N 03°07.175'E
39	51°43.060'N 03°06.078'E
40	51°43.006'N 03°03.379'E
41	51°42.867'N 03°07.335'E
42	51°42.720'N 03°04.235'E
43	51°42.481'N 03°05.142'E
44	51°42.336'N 03°07.488'E
45	51°42.213'N 03°05.973'E
46	51°41.981'N 03°06.775'E
47	51°41.723'N 03°07.653'E
48	51°41.749'N 03°02.960'E

Turbines

49	51°41.435'N 03°03.887'E
50	51°41.147'N 03°04.838'E
51	51°41.031'N 03°02.816'E
52	51°40.891'N 03°05.754'E
53	51°40.654'N 03°03.890'E
54	51°40.605'N 03°06.646'E
55	51°40.286'N 03°07.250'E
56	51°40.285'N 03°04.912'E
57	51°40.274'N 03°02.678'E
58	51°40.120'N 03°06.005'E
59	51°39.898'N 03°03.760'E
60	51°39.700'N 03°07.093'E
61	51°39.553'N 03°02.486'E
62	51°39.474'N 03°05.972'E
63	51°39.458'N 03°04.800'E
64	51°39.100'N 03°06.917'E
65	51°39.082'N 03°03.530'E
66	51°38.821'N 03°05.727'E
67	51°38.785'N 03°02.236'E
68	51°38.669'N 03°04.527'E
69	51°38.504'N 03°06.743'E
70	51°38.336'N 03°03.276'E
71	51°38.140'N 03°05.521'E



Contact us

- +44(0)131 380 4545
- kingfisher@seafish.co.uk
- @kingfisherinfo
- @KingfisherInformation
- www.kis-orca.org



Asset locations

Turbines

72	51°38.108'N 03°02.019'E
73	51°37.900'N 03°06.567'E
74	51°37.899'N 03°04.292'E
75	51°37.550'N 03°03.014'E
76	51°37.528'N 03°05.439'E
77	51°37.293'N 03°06.388'E
78	51°37.235'N 03°01.791'E
79	51°37.180'N 03°04.064'E
80	51°36.788'N 03°05.109'E
81	51°36.752'N 03°02.858'E
82	51°36.729'N 03°06.225'E
83	51°36.422'N 03°01.754'E
84	51°36.376'N 03°03.932'E
85	51°36.141'N 03°06.031'E
86	51°36.125'N 03°05.016'E
87	51°35.886'N 03°02.825'E
88	51°35.665'N 03°04.057'E
89	51°35.648'N 03°01.574'E
90	51°35.557'N 03°05.227'E
91	51°35.099'N 03°02.204'E
92	51°35.070'N 03°03.289'E
93	51°35.034'N 03°04.506'E
94	51°34.500'N 03°03.773'E



Contact us

- +44(0)131 380 4545
- kingfisher@seafish.co.uk
- @kingfisherinfo
- @KingfisherInformation
- www.kis-orca.org

