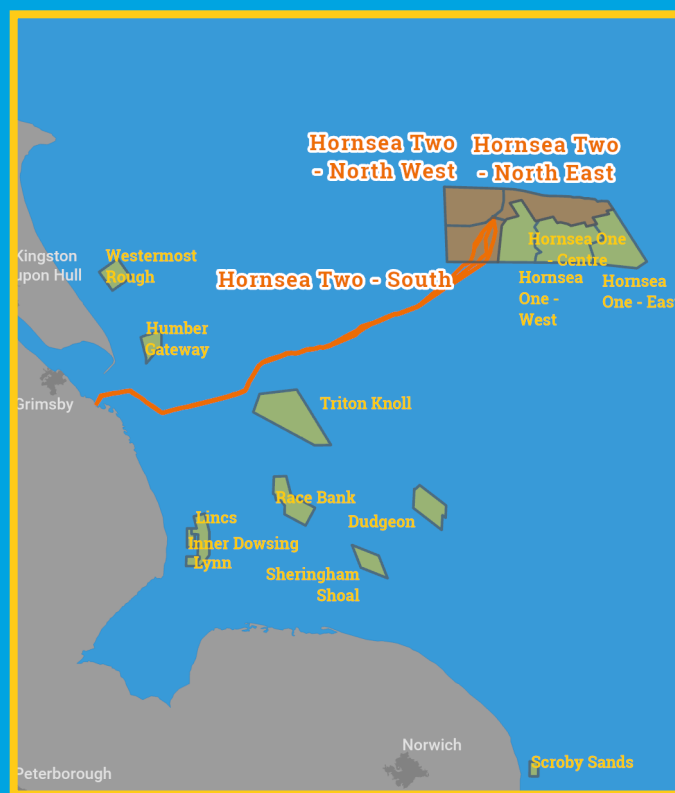




Kingfisher Wind farm Chart



Hornsea Project 2
Offshore wind farm
January 2026



Emergency contact number
+44(0)207 811 1170

Description

The Hornsea Project 2 Wind Farm is operated by Orsted. It is situated approximately 90 km from shore in the Southern North Sea (Humber). The wind farm is fully operational and has 165 turbines, a total capacity of 1.4 GW and cover an area of approximately 434 km².

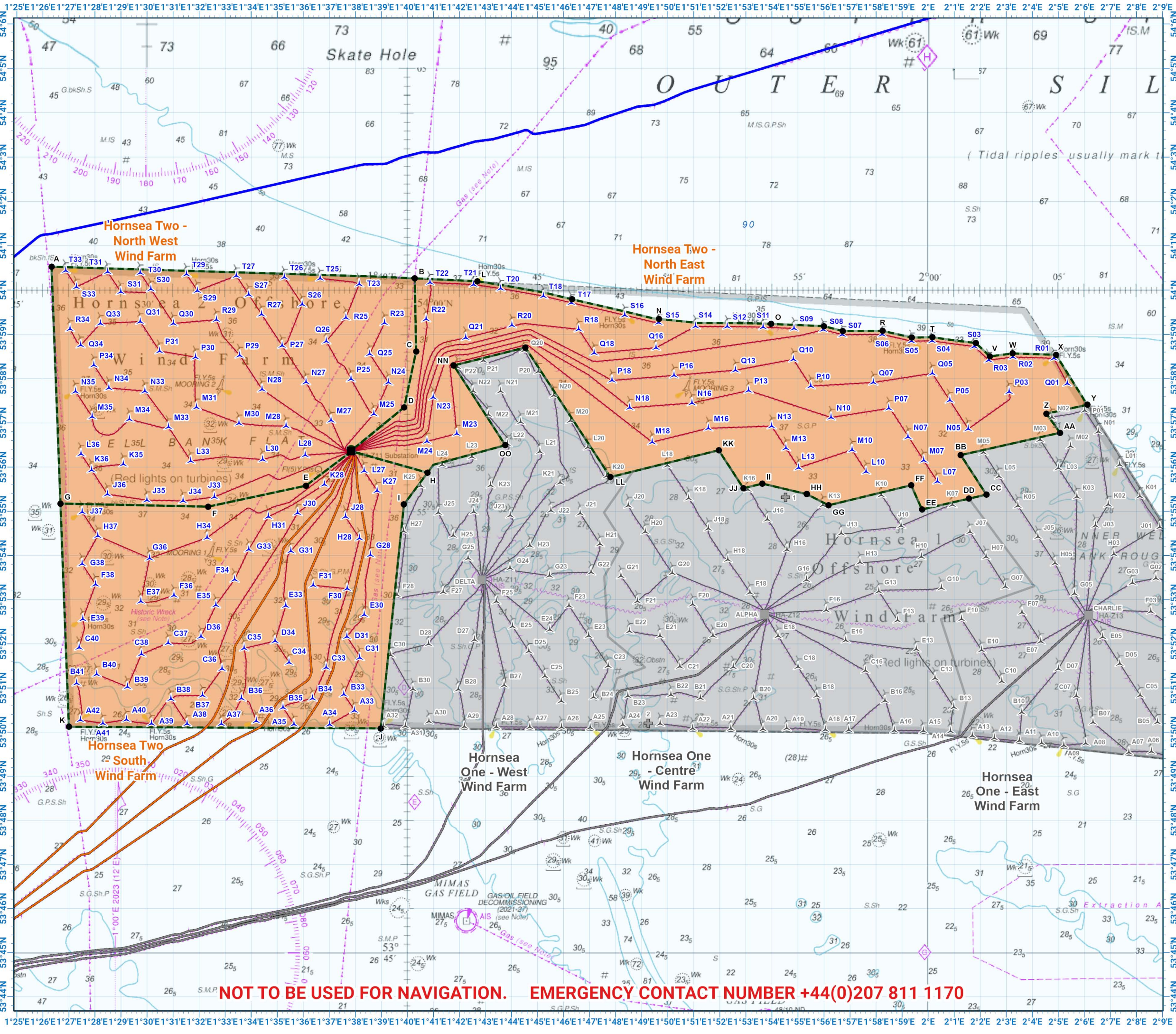
Emergency procedures

1. If you suspect you have snagged a subsea cable or renewable energy structure, DO NOT endanger your vessel and crew by attempting to recover your gear.
2. Carefully plot your vessel's position as accurately as possible.
3. Advise the Coastguard of your situation, and call the 24 hour Emergency Number and state that an incident is occurring concerning a subsea cable or renewable energy structure.

Reducing the risks whilst fishing

To reduce the risks of fishing near offshore structures, it is essential to be up to date with KIS-ORCA information. KIS-ORCA information is easy to install on your vessel's fishing plotter and ensures skippers are able to make informed decisions for their safety.

The closer to the surface a subsea cable is lifted when fouled by fishing gear, the more danger there is to the fishing vessel. In the interests of fishing safety and to prevent damage to subsea structures, fishermen are advised to exercise caution when fishing in the vicinity of subsea cables and renewable energy structures. Loss of gear, fishing time and catch can result if a trawler snags a subsea structure and there is serious risk of loss of life.



**Hornsea Project 2
Offshore Wind Farm**

- Site boundary
- Wind turbine
- Substation
- Export cable
- Inter array cable
- Power cable

Grey coloured features displayed on this chart represent additional offshore wind farm structures. Visit www.kis-orca.org/map for more info.

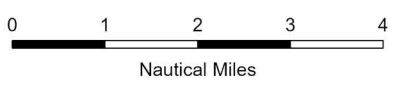


Projection: World_Mercator
Spheroid: GCS_WGS_1984
Datum: D_WGS_1984

This data is issued as a guide only. Seafish, cable / structure owners and Distributors accept no responsibility for any inaccuracies however caused.

Please be aware that other structures & cables may exist in addition to those shown on this chart.

© British Crown Copyright, 2025/26. All rights reserved. Not to be used for Navigation.



Scale @ A3:
1:150,000

NOT TO BE USED FOR NAVIGATION. EMERGENCY CONTACT NUMBER +44(0)207 811 1170

Asset locations

Hornsea Two North West Extents

A	54°00.527'N 01°26.333'E
B	54°00.265'N 01°40.282'E
C	53°58.615'N 01°40.335'E
D	53°57.352'N 01°39.877'E
E	53°55.579'N 01°36.101'E
F	53°55.105'N 01°32.348'E
G	53°55.175'N 01°26.677'E

Hornsea Two NW Turbines

J33	53°55.324'N 01°32.589'E
J34	53°55.235'N 01°31.386'E
J35	53°55.253'N 01°29.999'E
J36	53°55.386'N 01°28.483'E
K35	53°56.066'N 01°29.091'E
K36	53°55.932'N 01°27.873'E
L28	53°56.271'N 01°36.075'E
L30	53°56.171'N 01°34.443'E
L33	53°56.139'N 01°31.680'E
L36	53°56.297'N 01°27.465'E
M25	53°57.202'N 01°38.711'E
M27	53°57.057'N 01°37.070'E
M28	53°56.928'N 01°35.343'E
M30	53°56.991'N 01°33.530'E
M31	53°57.355'N 01°31.900'E
M33	53°56.907'N 01°30.824'E
M34	53°57.082'N 01°29.325'E
M35	53°57.139'N 01°27.892'E
N24	53°57.913'N 01°39.269'E
N27	53°57.922'N 01°36.106'E
N28	53°57.758'N 01°34.419'E
N33	53°57.717'N 01°29.919'E
N34	53°57.789'N 01°28.535'E
N35	53°57.710'N 01°27.255'E
P25	53°57.990'N 01°37.835'E
P27	53°58.744'N 01°35.191'E
P29	53°58.526'N 01°33.562'E
P30	53°58.485'N 01°31.865'E

Hornsea Two NW Turbines

P31	53°58.623'N 01°30.484'E
P34	53°58.303'N 01°27.960'E
Q25	53°58.557'N 01°38.553'E
Q26	53°58.844'N 01°36.885'E
Q30	53°59.247'N 01°31.014'E
Q31	53°59.288'N 01°29.741'E
Q33	53°59.245'N 01°28.211'E
Q34	53°58.756'N 01°27.454'E
R23	53°59.257'N 01°39.123'E
R25	53°59.377'N 01°37.641'E
R27	53°59.453'N 01°34.401'E
R29	53°59.331'N 01°32.665'E
R34	53°59.123'N 01°27.043'E
S26	53°59.675'N 01°35.960'E
S27	53°59.895'N 01°33.908'E
S29	53°59.984'N 01°31.935'E
S30	54°00.022'N 01°30.148'E
S31	53°59.958'N 01°28.993'E
S33	54°00.070'N 01°27.288'E
T23	54°00.133'N 01°38.149'E
T25	54°00.264'N 01°36.653'E
T26	54°00.289'N 01°35.275'E
T27	54°00.322'N 01°33.431'E
T29	54°00.357'N 01°31.519'E
T30	54°00.388'N 01°29.738'E
T31	54°00.410'N 01°28.487'E
T33	54°00.437'N 01°26.877'E



Contact us

-  +44(0)131 380 4545
-  kingfisher@seafish.co.uk
-  @kingfisherinfo
-  @KingfisherInformation
-  www.kis-orca.org



Asset locations

Hornsea Two South Extents

H	53°55.873'N 01°40.774'E
I	53°55.155'N 01°39.867'E
J	53°50.085'N 01°38.974'E
K	53°50.120'N 01°26.999'E

Hornsea Two South Turbines

A33	53°50.488'N 01°37.964'E
A34	53°50.174'N 01°37.014'E
A35	53°50.178'N 01°35.646'E
A36	53°50.254'N 01°34.199'E
A37	53°50.187'N 01°32.855'E
A38	53°50.190'N 01°31.541'E
A39	53°50.194'N 01°30.173'E
A40	53°50.286'N 01°29.211'E
A41	53°50.199'N 01°28.309'E
A42	53°50.277'N 01°27.442'E
B33	53°50.854'N 01°37.557'E
B34	53°50.765'N 01°36.358'E
B35	53°50.559'N 01°35.223'E
B36	53°50.764'N 01°33.632'E
B37	53°50.833'N 01°32.136'E
B38	53°50.750'N 01°30.919'E
B39	53°51.024'N 01°29.248'E
B40	53°51.312'N 01°28.068'E
B41	53°51.107'N 01°27.296'E
C31	53°51.685'N 01°38.171'E
C33	53°51.465'N 01°36.880'E
C34	53°51.578'N 01°35.455'E
C35	53°51.900'N 01°33.733'E
C36	53°51.435'N 01°32.885'E
C37	53°52.021'N 01°30.814'E
C38	53°51.767'N 01°29.787'E
C40	53°51.917'N 01°27.393'E
D31	53°52.161'N 01°37.679'E

Hornsea Two South Turbines

D34	53°52.063'N 01°34.916'E
D36	53°52.165'N 01°32.074'E
E30	53°52.661'N 01°38.345'E
E33	53°52.861'N 01°35.329'E
E35	53°52.877'N 01°32.647'E
E37	53°52.963'N 01°29.765'E
E39	53°52.561'N 01°27.535'E
F30	53°53.251'N 01°37.690'E
F31	53°53.328'N 01°36.384'E
F34	53°53.458'N 01°33.366'E
F36	53°53.099'N 01°31.034'E
F38	53°53.347'N 01°28.025'E
G28	53°54.014'N 01°38.582'E
G31	53°54.100'N 01°35.525'E
G33	53°54.138'N 01°33.910'E
G36	53°53.938'N 01°30.098'E
G38	53°53.810'N 01°27.508'E
H28	53°54.392'N 01°38.162'E
H31	53°54.878'N 01°34.660'E
H34	53°54.405'N 01°32.311'E
H37	53°54.445'N 01°28.111'E
J28	53°54.878'N 01°37.623'E
J30	53°54.964'N 01°35.787'E
J37	53°54.985'N 01°27.509'E
K27	53°55.466'N 01°38.838'E
K28	53°55.608'N 01°36.812'E
L27	53°55.914'N 01°38.340'E



Contact us

- +44(0)131 380 4545
- kingfisher@seafish.co.uk
- @kingfisherinfo
- @KingfisherInformation
- www.kis-orca.org



Asset locations

Hornsea Two North East Extents

L	54°00.199'N 01°42.686'E
M	53°59.791'N 01°46.326'E
N	53°59.347'N 01°49.662'E
O	53°59.236'N 01°53.967'E
P	53°59.184'N 01°56.003'E
Q	53°59.075'N 01°56.721'E
R	53°59.078'N 01°58.249'E
S	53°58.928'N 01°59.374'E
T	53°58.934'N 02°00.162'E
U	53°58.803'N 02°01.833'E

Hornsea Two North East Extents

V	53°58.502'N 02°02.374'E
W	53°58.569'N 02°03.251'E
X	53°58.538'N 02°04.911'E
Y	53°57.408'N 02°06.112'E
Z	53°57.208'N 02°04.540'E
AA	53°56.776'N 02°05.067'E
BB	53°56.272'N 02°01.254'E
CC	53°55.378'N 02°02.237'E
DD	53°55.287'N 02°01.567'E
EE	53°55.042'N 01°59.763'E

Hornsea Two North East Extents

FF	53°55.590'N 01°59.349'E
GG	53°55.136'N 01°56.177'E
HH	53°55.389'N 01°55.338'E
II	53°55.627'N 01°53.635'E
JJ	53°55.522'N 01°52.905'E
KK	53°56.381'N 01°51.957'E
LL	53°55.774'N 01°47.797'E
MM	53°58.703'N 01°44.531'E
NN	53°58.297'N 01°41.780'E
OO	53°56.495'N 01°43.760'E

Hornsea Two NE Turbines

L07	53°55.676'N 02°00.355'E
L10	53°55.898'N 01°57.619'E
L13	53°55.986'N 01°55.029'E
M07	53°56.153'N 01°59.831'E
M10	53°56.390'N 01°57.078'E
M13	53°56.429'N 01°54.541'E
M16	53°56.879'N 01°51.558'E
M18	53°56.564'N 01°49.402'E
M23	53°56.757'N 01°41.902'E
M24	53°56.580'N 01°40.752'E
N05	53°56.863'N 02°01.542'E
N07	53°56.682'N 01°59.228'E
N10	53°57.122'N 01°56.272'E
N13	53°56.927'N 01°53.992'E
N16	53°57.449'N 01°50.929'E
N18	53°57.343'N 01°48.541'E
N23	53°57.576'N 01°40.993'E
P03	53°57.702'N 02°03.114'E
P05	53°57.509'N 02°00.832'E
P07	53°57.328'N 01°58.489'E
P10	53°57.830'N 01°55.492'E
P13	53°57.731'N 01°53.106'E
P16	53°58.072'N 01°50.240'E
P18	53°57.960'N 01°47.859'E
Q01	53°57.889'N 02°05.345'E
Q05	53°58.118'N 02°00.162'E
Q07	53°57.914'N 01°57.894'E
Q10	53°58.436'N 01°54.824'E

Hornsea Two NE Turbines

Q13	53°58.190'N 01°52.599'E
Q16	53°58.697'N 01°49.549'E
Q18	53°58.577'N 01°47.176'E
Q21	53°58.922'N 01°42.242'E
R01	53°58.459'N 02°04.834'E
R02	53°58.489'N 02°03.258'E
R03	53°58.417'N 02°02.328'E
R18	53°59.114'N 01°46.581'E
R20	53°59.208'N 01°44.016'E
R22	53°59.344'N 01°40.718'E
S03	53°58.727'N 02°01.772'E
S04	53°58.853'N 02°00.154'E
S05	53°58.848'N 01°59.360'E
S06	53°58.998'N 01°58.235'E
S07	53°58.994'N 01°56.704'E
S08	53°59.106'N 01°55.969'E
S09	53°59.134'N 01°54.853'E
S11	53°59.164'N 01°53.666'E
S12	53°59.176'N 01°52.285'E
S14	53°59.182'N 01°51.068'E
S15	53°59.266'N 01°49.648'E
S16	53°59.434'N 01°48.348'E
T17	53°59.713'N 01°46.295'E
T18	53°59.865'N 01°45.224'E
T20	54°00.035'N 01°43.583'E
T21	54°00.125'N 01°42.545'E
T22	54°00.169'N 01°40.869'E



Contact us

- +44(0)131 380 4545
- kingfisher@seafish.co.uk
- @kingfisherinfo
- @KingfisherInformation
- www.kis-orca.org

