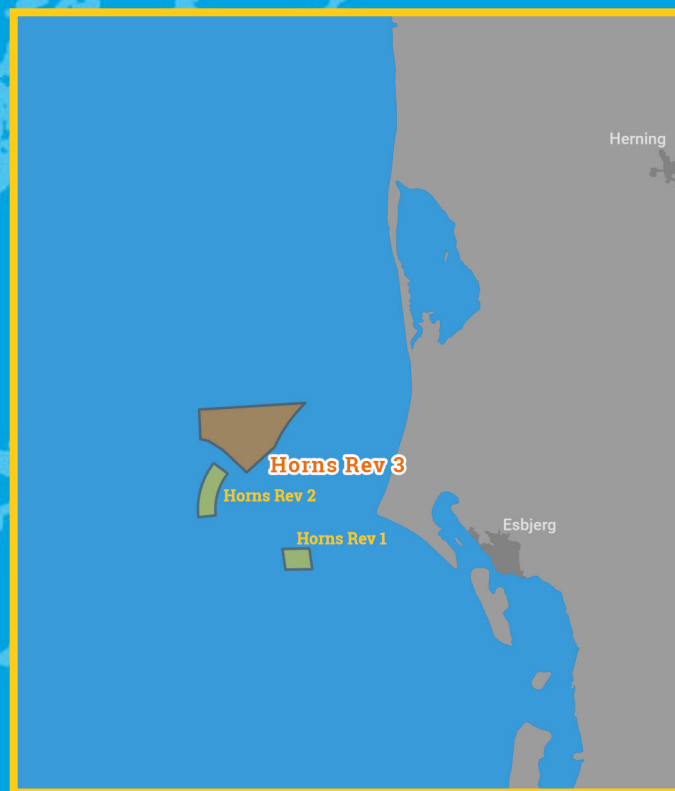




Kingfisher Wind farm Chart



Horns Rev 3
Offshore wind farm
January 2026



Emergency contact number
+46(0) 8739 5000

Description

The Horns Rev 3 Wind Farm is operated by Vattenfall. It is situated approximately 19 km from shore in the Eastern North Sea, off the coast of Jutland, Denmark. The wind farm is fully operational and has 49 turbines, a total capacity of 406 MW and covers an area of approximately 144 km².

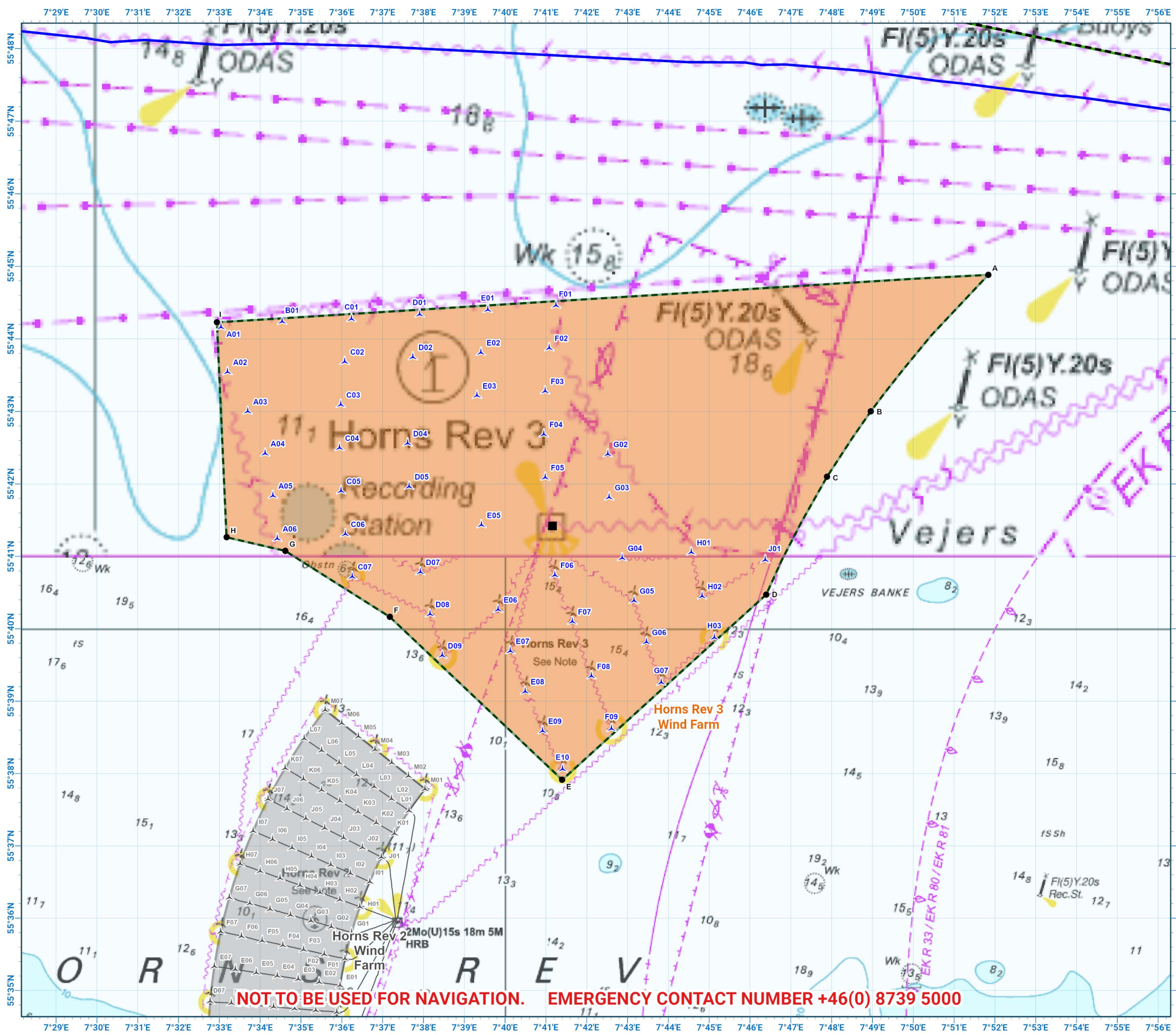
Emergency procedures

1. If you suspect you have snagged a subsea cable or renewable energy structure, DO NOT endanger your vessel and crew by attempting to recover your gear.
2. Carefully plot your vessel's position as accurately as possible.
3. Advise the Coastguard of your situation, and call the 24 hour Emergency Number and state that an incident is occurring concerning a subsea cable or renewable energy structure.

Reducing the risks whilst fishing

To reduce the risks of fishing near offshore structures, it is essential to be up to date with KIS-ORCA information. KIS-ORCA information is easy to install on your vessel's fishing plotter and ensures skippers are able to make informed decisions for their safety.

The closer to the surface a subsea cable is lifted when fouled by fishing gear, the more danger there is to the fishing vessel. In the interests of fishing safety and to prevent damage to subsea structures, fishermen are advised to exercise caution when fishing in the vicinity of subsea cables and renewable energy structures. Loss of gear, fishing time and catch can result if a trawler snags a subsea structure and there is serious risk of loss of life.



NOT TO BE USED FOR NAVIGATION. EMERGENCY CONTACT NUMBER +46(0) 8739 5000

**Horns Rev 3
Offshore Wind Farm**

- Site boundary
- Wind turbine
- Substation
- Telecomms cable
- Power cable
- Out of Use cable

Grey coloured features displayed on this chart represent additional offshore wind farm structures. Visit www.kis-orca.org/map for more info.

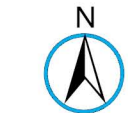
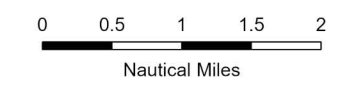


Projection: World_Mercator
Spheroid: GCS_WGS_1984
Datum: D_WGS_1984

This data is issued as a guide only. Seafish, cable / structure owners and Distributors accept no responsibility for any inaccuracies however caused.

Please be aware that other structures & cables may exist in addition to those shown on this chart.

© British Crown Copyright, 2025/26.
All rights reserved.
Not to be used for Navigation.



Scale @ A3:
1:100,000

Asset locations

Extents		Extents		Infrastructure	
A	55°44.883'N 07°51.837'E	F	55°40.164'N 07°37.176'E	SUBSTATION	55°41.421'N 07°41.162'E
B	55°43.002'N 07°48.961'E	G	55°41.076'N 07°34.614'E		
C	55°42.099'N 07°47.888'E	H	55°41.264'N 07°33.176'E		
D	55°40.473'N 07°46.398'E	I	55°44.228'N 07°32.941'E		
E	55°37.913'N 07°41.400'E				

Turbines		Turbines	
A01	55°44.162'N 07°33.040'E	F01	55°44.463'N 07°41.247'E
A02	55°43.545'N 07°33.202'E	F02	55°43.875'N 07°41.081'E
A03	55°43.001'N 07°33.695'E	F03	55°43.281'N 07°40.982'E
A04	55°42.422'N 07°34.123'E	F04	55°42.686'N 07°40.950'E
A05	55°41.839'N 07°34.313'E	F05	55°42.090'N 07°40.986'E
A06	55°41.246'N 07°34.419'E	F06	55°40.743'N 07°41.220'E
B01	55°44.239'N 07°34.539'E	F07	55°40.100'N 07°41.649'E
C01	55°44.276'N 07°36.238'E	F08	55°39.348'N 07°42.116'E
C02	55°43.687'N 07°36.072'E	F09	55°38.620'N 07°42.606'E
C03	55°43.094'N 07°35.975'E	G02	55°42.412'N 07°42.516'E
C04	55°42.498'N 07°35.945'E	G03	55°41.816'N 07°42.551'E
C05	55°41.903'N 07°35.982'E	G04	55°40.979'N 07°42.870'E
C06	55°41.309'N 07°36.086'E	G05	55°40.389'N 07°43.161'E
C07	55°40.721'N 07°36.256'E	G06	55°39.818'N 07°43.462'E
D01	55°44.339'N 07°37.907'E	G07	55°39.259'N 07°43.825'E
D02	55°43.750'N 07°37.742'E	H01	55°41.056'N 07°44.561'E
D04	55°42.561'N 07°37.613'E	H02	55°40.451'N 07°44.828'E
D05	55°41.965'N 07°37.650'E	H03	55°39.879'N 07°45.128'E
D07	55°40.784'N 07°37.924'E	J01	55°40.951'N 07°46.376'E
D08	55°40.203'N 07°38.160'E		
D09	55°39.632'N 07°38.462'E		
E01	55°44.401'N 07°39.577'E		
E02	55°43.813'N 07°39.410'E		
E03	55°43.219'N 07°39.313'E		
E05	55°41.434'N 07°39.421'E		
E06	55°40.266'N 07°39.827'E		
E07	55°39.694'N 07°40.128'E		
E08	55°39.135'N 07°40.493'E		
E09	55°38.590'N 07°40.920'E		
E10	55°38.061'N 07°41.408'E		



Contact us

- ☎ +44(0)131 380 4545
- ✉ kingfisher@seafish.co.uk
- 🐦 @kingfisherinfo
- 📘 @KingfisherInformation
- 🌐 www.kis-orca.org

