



# Kingfisher Wind farm Chart



**Dudgeon**  
**Offshore wind farm**  
January 2026



**Emergency contact number**  
**+44(0)20 7448 8222**

## Description

The Dudgeon Offshore Wind Farm is operated by Equinor. It is situated approximately 38 km from shore in the Southern North Sea, in the Outer Wash. The wind farm is fully operational and has 67 turbines, a total capacity of 402 MW and covers an area of approximately 55 km<sup>2</sup>.

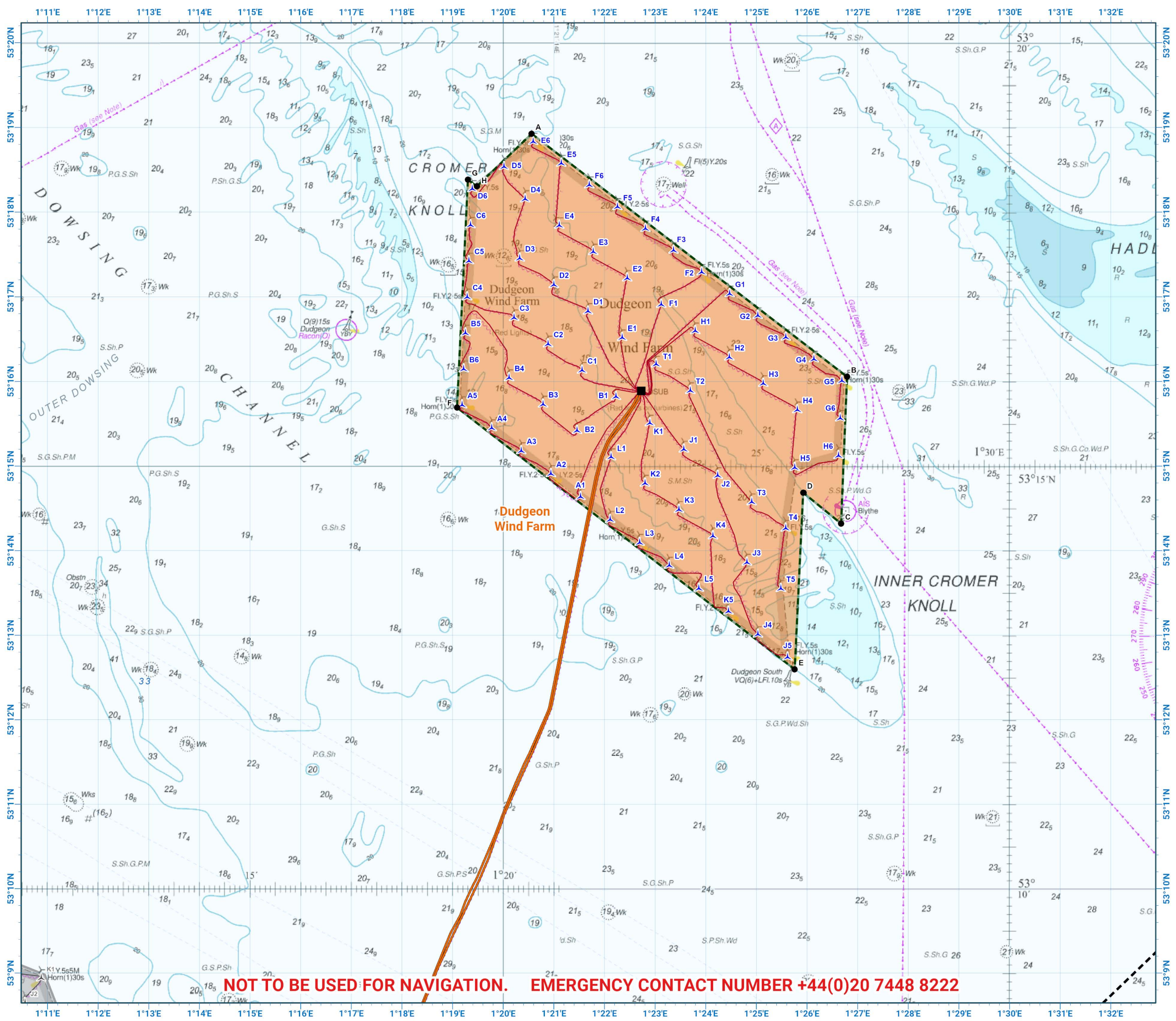
## Emergency procedures

1. If you suspect you have snagged a subsea cable or renewable energy structure, DO NOT endanger your vessel and crew by attempting to recover your gear.
2. Carefully plot your vessel's position as accurately as possible.
3. Advise the Coastguard of your situation, and call the 24 hour Emergency Number and state that an incident is occurring concerning a subsea cable or renewable energy structure.

## Reducing the risks whilst fishing

To reduce the risks of fishing near offshore structures, it is essential to be up to date with KIS-ORCA information. KIS-ORCA information is easy to install on your vessel's fishing plotter and ensures skippers are able to make informed decisions for their safety.

The closer to the surface a subsea cable is lifted when fouled by fishing gear, the more danger there is to the fishing vessel. In the interests of fishing safety and to prevent damage to subsea structures, fishermen are advised to exercise caution when fishing in the vicinity of subsea cables and renewable energy structures. Loss of gear, fishing time and catch can result if a trawler snags a subsea structure and there is serious risk of loss of life.



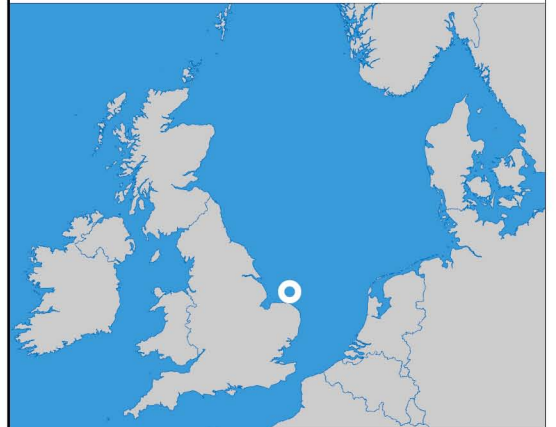
**NOT TO BE USED FOR NAVIGATION. EMERGENCY CONTACT NUMBER +44(0)20 7448 8222**



**Dudgeon  
Offshore Wind Farm**

- Site boundary
- Wind turbine
- Substation
- Export cable
- Inter array cable
- Out of Use cable

Grey coloured features displayed on this chart represent additional offshore wind farm structures. Visit [www.kis-orca.org/map](http://www.kis-orca.org/map) for more info.

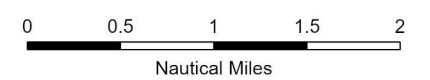


Projection: World\_Mercator  
Spheroid: GCS\_WGS\_1984  
Datum: D\_WGS\_1984

This data is issued as a guide only. Seafish, cable / structure owners and Distributors accept no responsibility for any inaccuracies however caused.

Please be aware that other structures & cables may exist in addition to those shown on this chart.

© British Crown Copyright, 2025/26.  
All rights reserved.  
Not to be used for Navigation.



Scale @ A3:  
1:75,000

# Asset locations

Extents		Extents		Infrastructure	
A	53°18.925'N 01°20.562'E	E	53°12.596'N 01°25.757'E	SUBSTATION	53°15.888'N 01°22.726'E
B	53°16.056'N 01°26.790'E	F	53°15.691'N 01°19.088'E		
C	53°14.320'N 01°26.673'E	G	53°18.384'N 01°19.303'E		
D	53°14.686'N 01°25.924'E	H	53°18.305'N 01°19.479'E		

Turbines		Turbines	
A1	53°14.637'N 01°21.527'E	F6	53°18.319'N 01°21.701'E
A2	53°14.908'N 01°20.943'E	G1	53°17.035'N 01°24.473'E
A3	53°15.179'N 01°20.357'E	G2	53°16.778'N 01°25.028'E
A4	53°15.450'N 01°19.773'E	G3	53°16.521'N 01°25.582'E
A5	53°15.721'N 01°19.187'E	G4	53°16.264'N 01°26.136'E
B1	53°15.820'N 01°22.228'E	G5	53°16.007'N 01°26.690'E
B2	53°15.419'N 01°21.459'E	G6	53°15.566'N 01°26.656'E
B3	53°15.730'N 01°20.787'E	H1	53°16.598'N 01°23.794'E
B4	53°16.042'N 01°20.116'E	H2	53°16.286'N 01°24.466'E
B5	53°16.572'N 01°19.255'E	H3	53°15.975'N 01°25.137'E
B6	53°16.146'N 01°19.221'E	H4	53°15.663'N 01°25.809'E
C1	53°16.131'N 01°21.557'E	H5	53°14.982'N 01°25.759'E
C2	53°16.442'N 01°20.886'E	H6	53°15.123'N 01°26.623'E
C3	53°16.753'N 01°20.216'E	J1	53°15.198'N 01°23.568'E
C4	53°16.997'N 01°19.289'E	J2	53°14.887'N 01°24.238'E
C5	53°17.423'N 01°19.323'E	J3	53°13.861'N 01°24.814'E
C6	53°17.848'N 01°19.356'E	J4	53°13.010'N 01°25.032'E
D1	53°16.829'N 01°21.675'E	J5	53°12.739'N 01°25.617'E
D2	53°17.142'N 01°21.001'E	K1	53°15.508'N 01°22.898'E
D3	53°17.455'N 01°20.327'E	K2	53°14.796'N 01°22.801'E
D4	53°18.154'N 01°20.435'E	K3	53°14.485'N 01°23.472'E
D5	53°18.535'N 01°20.015'E	K4	53°14.173'N 01°24.143'E
D6	53°18.274'N 01°19.390'E	K5	53°13.282'N 01°24.449'E
E1	53°16.517'N 01°22.349'E	L1	53°15.107'N 01°22.130'E
E2	53°17.220'N 01°22.450'E	L2	53°14.366'N 01°22.112'E
E3	53°17.532'N 01°21.779'E	L3	53°14.095'N 01°22.695'E
E4	53°17.843'N 01°21.107'E	L4	53°13.824'N 01°23.280'E
E5	53°18.575'N 01°21.147'E	L5	53°13.553'N 01°23.865'E
E6	53°18.832'N 01°20.592'E	T1	53°16.204'N 01°23.022'E
F1	53°16.909'N 01°23.122'E	T2	53°15.891'N 01°23.696'E
F2	53°17.291'N 01°23.919'E	T3	53°14.575'N 01°24.908'E
F3	53°17.548'N 01°23.365'E	T4	53°14.264'N 01°25.579'E
F4	53°17.805'N 01°22.810'E	T5	53°13.550'N 01°25.484'E
F5	53°18.062'N 01°22.256'E		



## Contact us

- +44 (0)131 380 4545
- kingfisher@seafish.co.uk
- @kingfisherinfo
- @KingfisherInformation
- www.kis-orca.org

