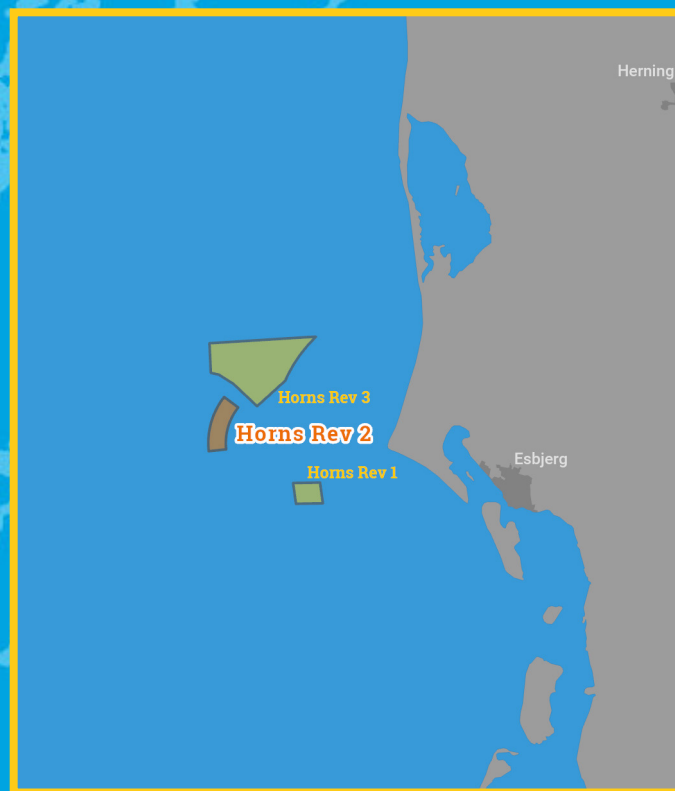




# Kingfisher Wind farm Chart



**Horns Rev 2**  
**Offshore wind farm**  
January 2026



**Emergency contact number**  
**+45(0) 9955 5655**

## Description

The Horns Rev 2 Wind Farm is operated by Orsted. It is situated approximately 29 km from shore in the Eastern North Sea, off the coast of Jutland, Denmark. The wind farm is fully operational and has 91 turbines, a total capacity of 209 MW and covers an area of approximately 31 km<sup>2</sup>.

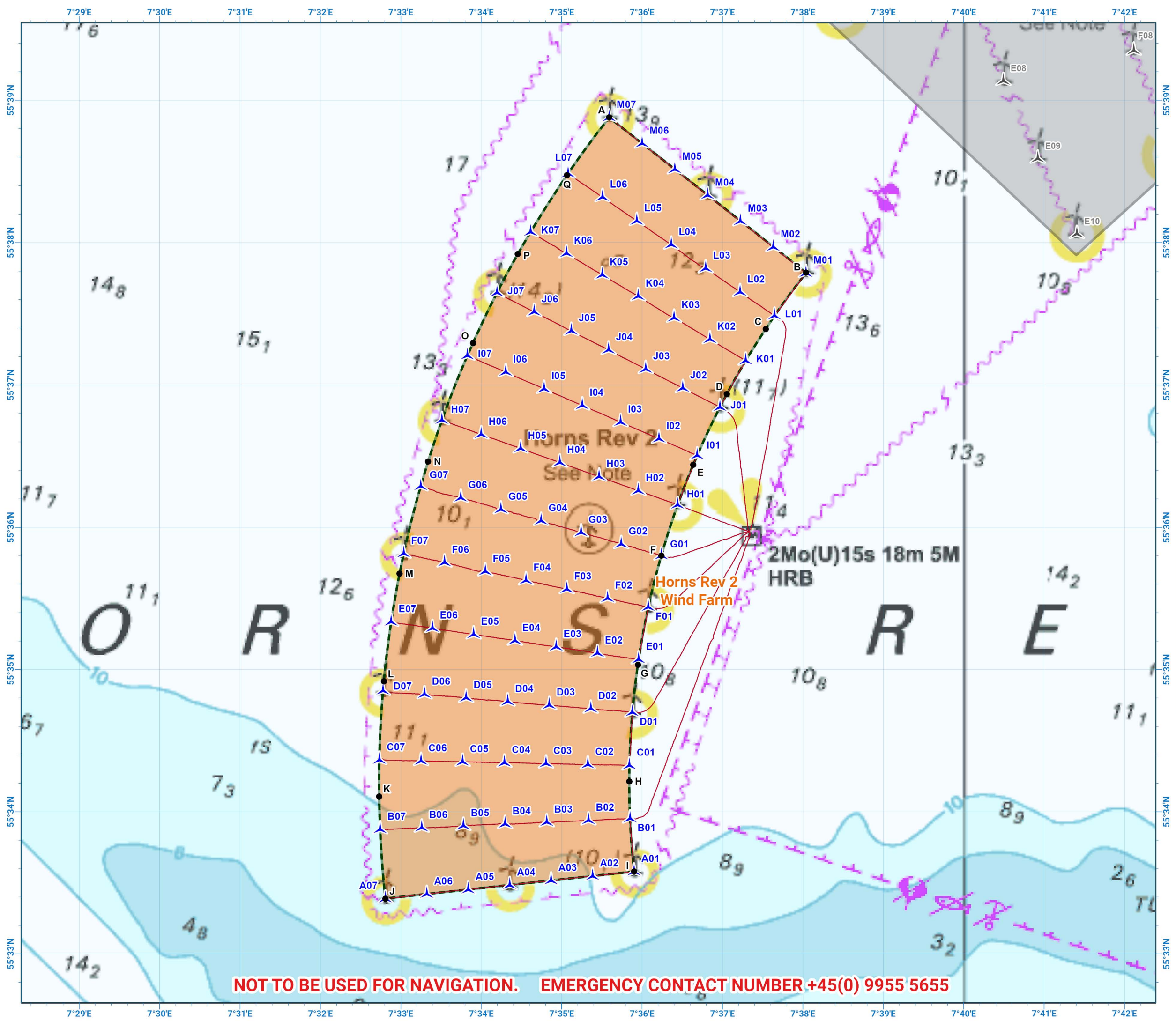
## Emergency procedures

1. If you suspect you have snagged a subsea cable or renewable energy structure, DO NOT endanger your vessel and crew by attempting to recover your gear.
2. Carefully plot your vessel's position as accurately as possible.
3. Advise the Coastguard of your situation, and call the 24 hour Emergency Number and state that an incident is occurring concerning a subsea cable or renewable energy structure.

## Reducing the risks whilst fishing

To reduce the risks of fishing near offshore structures, it is essential to be up to date with KIS-ORCA information. KIS-ORCA information is easy to install on your vessel's fishing plotter and ensures skippers are able to make informed decisions for their safety.

The closer to the surface a subsea cable is lifted when fouled by fishing gear, the more danger there is to the fishing vessel. In the interests of fishing safety and to prevent damage to subsea structures, fishermen are advised to exercise caution when fishing in the vicinity of subsea cables and renewable energy structures. Loss of gear, fishing time and catch can result if a trawler snags a subsea structure and there is serious risk of loss of life.

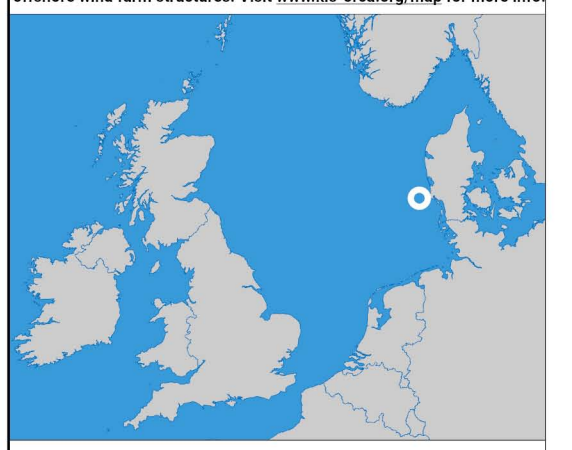


**NOT TO BE USED FOR NAVIGATION. EMERGENCY CONTACT NUMBER +45(0) 9955 5655**

**Horns Rev 2  
Offshore Wind Farm**

- Site boundary
- Inter array cable
- Wind turbine

Grey coloured features displayed on this chart represent additional offshore wind farm structures. Visit [www.kis-orca.org/map](http://www.kis-orca.org/map) for more info.

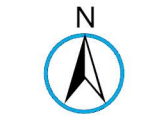
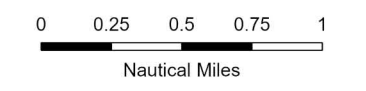


Projection: World\_Mercator  
Spheroid: GCS\_WGS\_1984  
Datum: D\_WGS\_1984

This data is issued as a guide only. Seafish, cable / structure owners and Distributors accept no responsibility for any inaccuracies however caused.

Please be aware that other structures & cables may exist in addition to those shown on this chart.

© British Crown Copyright, 2025/26.  
All rights reserved.  
Not to be used for Navigation.



Scale @ A3:  
1:50,000

# Asset locations

## Extents

A	55°38.879'N 07°35.592'E
B	55°37.790'N 07°38.040'E
C	55°37.393'N 07°37.537'E
D	55°36.937'N 07°37.055'E
E	55°36.439'N 07°36.636'E
F	55°35.801'N 07°36.240'E

## Extents

G	55°35.034'N 07°35.948'E
H	55°34.214'N 07°35.841'E
I	55°33.580'N 07°35.900'E
J	55°33.389'N 07°32.808'E
K	55°34.108'N 07°32.731'E
L	55°34.917'N 07°32.789'E

## Extents

M	55°35.675'N 07°32.985'E
N	55°36.463'N 07°33.340'E
O	55°37.294'N 07°33.897'E
P	55°37.919'N 07°34.454'E
Q	55°38.474'N 07°35.066'E

## Turbines

A01	55°33.579'N 07°35.900'E
A02	55°33.547'N 07°35.385'E
A03	55°33.516'N 07°34.869'E
A04	55°33.484'N 07°34.354'E
A05	55°33.452'N 07°33.838'E
A06	55°33.421'N 07°33.323'E
A07	55°33.389'N 07°32.808'E
B01	55°33.952'N 07°35.851'E
B02	55°33.939'N 07°35.333'E
B03	55°33.926'N 07°34.814'E
B04	55°33.914'N 07°34.296'E
B05	55°33.901'N 07°33.778'E
B06	55°33.888'N 07°33.260'E
B07	55°33.876'N 07°32.743'E
C01	55°34.326'N 07°35.843'E
C02	55°34.332'N 07°35.325'E
C03	55°34.339'N 07°34.806'E
C04	55°34.345'N 07°34.288'E
C05	55°34.351'N 07°33.769'E
C06	55°34.357'N 07°33.251'E
C07	55°34.364'N 07°32.733'E
D01	55°34.699'N 07°35.879'E
D02	55°34.725'N 07°35.362'E
D03	55°34.750'N 07°34.846'E
D04	55°34.775'N 07°34.329'E
D05	55°34.801'N 07°33.812'E
D06	55°34.826'N 07°33.295'E
D07	55°34.851'N 07°32.778'E
E01	55°35.071'N 07°35.957'E
E02	55°35.115'N 07°35.445'E
E03	55°35.159'N 07°34.932'E

## Turbines

E04	55°35.203'N 07°34.419'E
E05	55°35.247'N 07°33.906'E
E06	55°35.291'N 07°33.393'E
E07	55°35.335'N 07°32.880'E
F01	55°35.439'N 07°36.078'E
F02	55°35.501'N 07°35.571'E
F03	55°35.565'N 07°35.064'E
F04	55°35.627'N 07°34.557'E
F05	55°35.690'N 07°34.050'E
F06	55°35.752'N 07°33.543'E
F07	55°35.815'N 07°33.036'E
G01	55°35.801'N 07°36.240'E
G02	55°35.882'N 07°35.741'E
G03	55°35.964'N 07°35.242'E
G04	55°36.045'N 07°34.744'E
G05	55°36.126'N 07°34.244'E
G06	55°36.207'N 07°33.746'E
G07	55°36.288'N 07°33.247'E
H01	55°36.157'N 07°36.442'E
H02	55°36.257'N 07°35.954'E
H03	55°36.356'N 07°35.466'E
H04	55°36.455'N 07°34.977'E
H05	55°36.554'N 07°34.489'E
H06	55°36.653'N 07°34.000'E
H07	55°36.753'N 07°33.511'E
I01	55°36.505'N 07°36.686'E
I02	55°36.622'N 07°36.210'E
I03	55°36.739'N 07°35.733'E
I04	55°36.856'N 07°35.257'E
I05	55°36.973'N 07°34.781'E

## Turbines

I06	55°37.090'N 07°34.305'E
I07	55°37.206'N 07°33.828'E
J01	55°36.844'N 07°36.969'E
J02	55°36.978'N 07°36.507'E
J03	55°37.112'N 07°36.045'E
J04	55°37.246'N 07°35.583'E
J05	55°37.380'N 07°35.120'E
J06	55°37.513'N 07°34.658'E
J07	55°37.648'N 07°34.196'E
K01	55°37.171'N 07°37.289'E
K02	55°37.321'N 07°36.843'E
K03	55°37.472'N 07°36.398'E
K04	55°37.623'N 07°35.952'E
K05	55°37.773'N 07°35.505'E
K06	55°37.924'N 07°35.060'E
K07	55°38.074'N 07°34.614'E
L01	55°37.486'N 07°37.647'E
L02	55°37.652'N 07°37.219'E
L03	55°37.819'N 07°36.791'E
L04	55°37.985'N 07°36.363'E
L05	55°38.152'N 07°35.935'E
L06	55°38.319'N 07°35.508'E
L07	55°38.485'N 07°35.080'E
M01	55°37.786'N 07°38.039'E
M02	55°37.968'N 07°37.632'E
M03	55°38.150'N 07°37.223'E
M04	55°38.332'N 07°36.815'E
M05	55°38.514'N 07°36.407'E
M06	55°38.696'N 07°36.000'E
M07	55°38.878'N 07°35.592'E



## Contact us

- +44(0)131 380 4545
- kingfisher@seafish.co.uk
- @kingfisherinfo
- @KingfisherInformation
- www.kis-orca.org

