



Kingfisher Wind farm Chart



Gode Wind 2
Offshore wind farm
January 2026



Emergency contact number
+44(0)8455 441037

Description

The Gode 2 Wind Farm is operated by Orsted. It is situated approximately 38 km from shore in the Eastern North Sea, off the coast of Germany. The wind farm is fully operational and has 42 turbines, a total capacity of 252 MW and covers an area of approximately 29 km².

Emergency procedures

1. If you suspect you have snagged a subsea cable or renewable energy structure, DO NOT endanger your vessel and crew by attempting to recover your gear.
2. Carefully plot your vessel's position as accurately as possible.
3. Advise the Coastguard of your situation, and call the 24 hour Emergency Number and state that an incident is occurring concerning a subsea cable or renewable energy structure.

Reducing the risks whilst fishing

To reduce the risks of fishing near offshore structures, it is essential to be up to date with KIS-ORCA information. KIS-ORCA information is easy to install on your vessel's fishing plotter and ensures skippers are able to make informed decisions for their safety.

The closer to the surface a subsea cable is lifted when fouled by fishing gear, the more danger there is to the fishing vessel. In the interests of fishing safety and to prevent damage to subsea structures, fishermen are advised to exercise caution when fishing in the vicinity of subsea cables and renewable energy structures. Loss of gear, fishing time and catch can result if a trawler snags a subsea structure and there is serious risk of loss of life.

**Gode 2
Offshore Wind Farm**

-  Site boundary
-  Wind turbine
-  Inter array cable
-  Out of Use cable
-  Buoy

Grey coloured features displayed on this chart represent additional offshore wind farm structures. Visit www.kis-orca.org/map for more info.

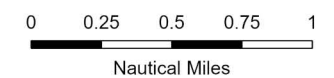


Projection: World_Mercator
Spheroid: GCS_WGS_1984
Datum: D_WGS_1984

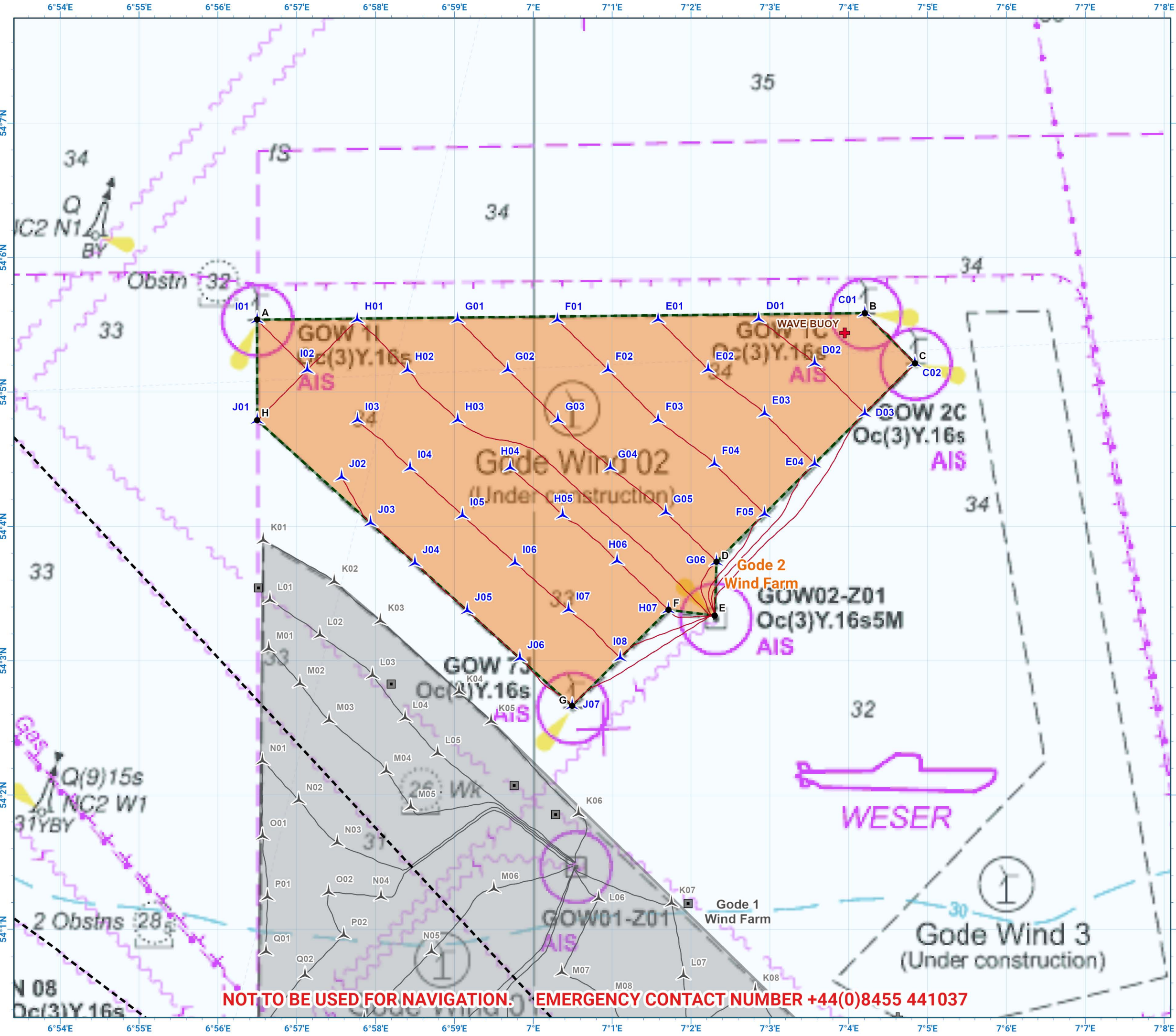
This data is issued as a guide only. Seafish, cable / structure owners and Distributors accept no responsibility for any inaccuracies however caused.

Please be aware that other structures & cables may exist in addition to those shown on this chart.

© British Crown Copyright, 2025/26.
All rights reserved.
Not to be used for Navigation.



Scale @ A3:
1:50,000



NOT TO BE USED FOR NAVIGATION. EMERGENCY CONTACT NUMBER +44(0)8455 441037

Asset locations

Extents		Extents		Infrastructure	
A	54°05.538'N 06°56.497'E	E	54°03.336'N 07°02.302'E	WAVE BUOY	54°05.440'N 07°03.950'E
B	54°05.587'N 07°04.204'E	F	54°03.379'N 07°01.713'E		
C	54°05.213'N 07°04.840'E	G	54°02.664'N 07°00.493'E		
D	54°03.736'N 07°02.323'E	H	54°04.790'N 06°56.499'E		

Turbines		Turbines	
C01	54°05.587'N 07°04.204'E	H02	54°05.165'N 06°58.405'E
C02	54°05.213'N 07°04.839'E	H03	54°04.792'N 06°59.041'E
D01	54°05.543'N 07°02.858'E	H04	54°04.438'N 06°59.707'E
D02	54°05.214'N 07°03.568'E	H05	54°04.084'N 07°00.372'E
D03	54°04.840'N 07°04.204'E	H06	54°03.743'N 07°01.063'E
E01	54°05.540'N 07°01.582'E	H07	54°03.379'N 07°01.713'E
E02	54°05.168'N 07°02.217'E	I01	54°05.538'N 06°56.498'E
E03	54°04.840'N 07°02.933'E	I02	54°05.165'N 06°57.134'E
E04	54°04.466'N 07°03.568'E	I03	54°04.792'N 06°57.771'E
F01	54°05.537'N 07°00.305'E	I04	54°04.436'N 06°58.437'E
F02	54°05.166'N 07°00.946'E	I05	54°04.082'N 06°59.102'E
F03	54°04.793'N 07°01.583'E	I06	54°03.729'N 06°59.767'E
F04	54°04.466'N 07°02.297'E	I07	54°03.381'N 07°00.446'E
F05	54°04.093'N 07°02.933'E	I08	54°03.022'N 07°01.103'E
G01	54°05.539'N 06°59.040'E	J01	54°04.790'N 06°56.500'E
G02	54°05.166'N 06°59.676'E	J02	54°04.367'N 06°57.568'E
G03	54°04.793'N 07°00.312'E	J03	54°04.027'N 06°57.935'E
G04	54°04.438'N 07°00.977'E	J04	54°03.727'N 06°58.498'E
G05	54°04.105'N 07°01.680'E	J05	54°03.374'N 06°59.163'E
G06	54°03.736'N 07°02.323'E	J06	54°03.019'N 06°59.829'E
H01	54°05.539'N 06°57.768'E	J07	54°02.664'N 07°00.493'E



Contact us

- ☎ +44(0)131 380 4545
- ✉ kingfisher@seafish.co.uk
- 🐦 @kingfisherinfo
- 📘 @KingfisherInformation
- 🌐 www.kis-orca.org

