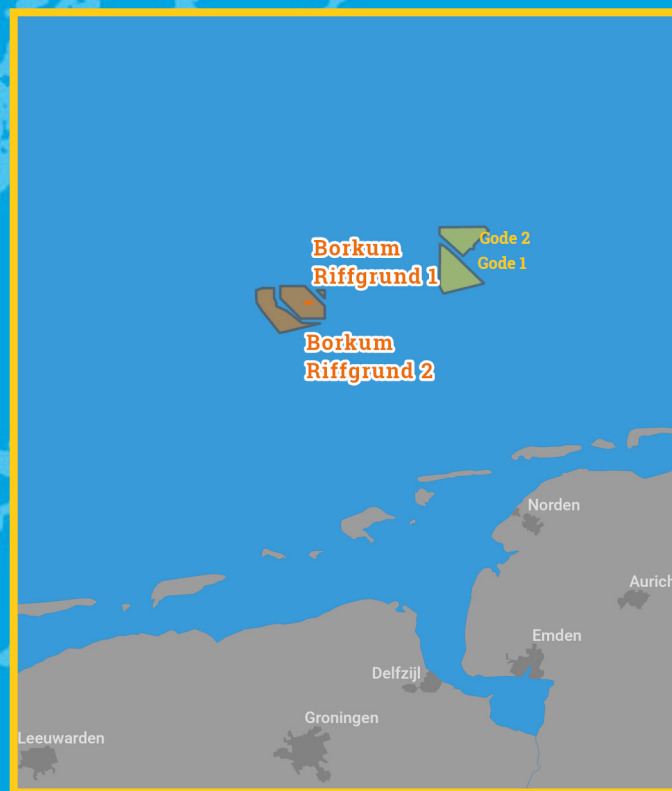




Kingfisher Wind farm Chart



Borkum Riffgrund
Offshore wind farm
January 2026



Emergency contact number
+44(0) 2078 11 11 70

Description

The Borkum Riffgrund 1 Wind Farm is operated by Orsted. It is situated approximately 34 km from shore in the Eastern North Sea, off the coast of Germany. The wind farm is fully operational and has 78 turbines, a total capacity of 312 MW and covers an area of approximately 36 km².

The Borkum Riffgrund 2 Wind Farm is operated by Orsted. It is situated approximately 34 km from shore in the Eastern North Sea, off the coast of Germany. The wind farm is fully operational and has 56 turbines, a total capacity of 450 MW and covers an area of approximately 36 km².

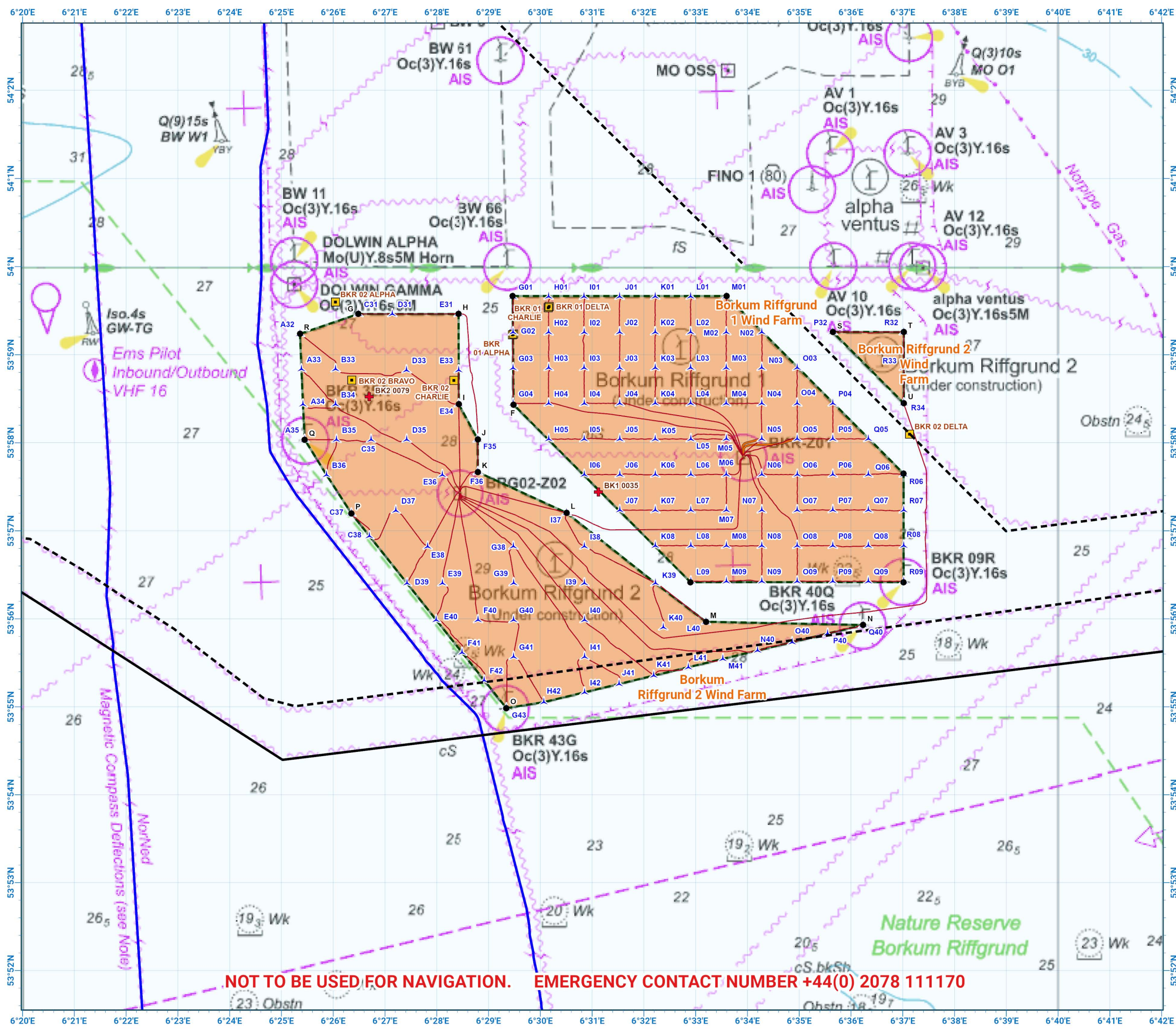
Emergency procedures

1. If you suspect you have snagged a subsea cable or renewable energy structure, DO NOT endanger your vessel and crew by attempting to recover your gear.
2. Carefully plot your vessel's position as accurately as possible.
3. Advise the Coastguard of your situation, and call the 24 hour Emergency Number and state that an incident is occurring concerning a subsea cable or renewable energy structure.

Reducing the risks whilst fishing

To reduce the risks of fishing near offshore structures, it is essential to be up to date with KIS-ORCA information. KIS-ORCA information is easy to install on your vessel's fishing plotter and ensures skippers are able to make informed decisions for their safety.

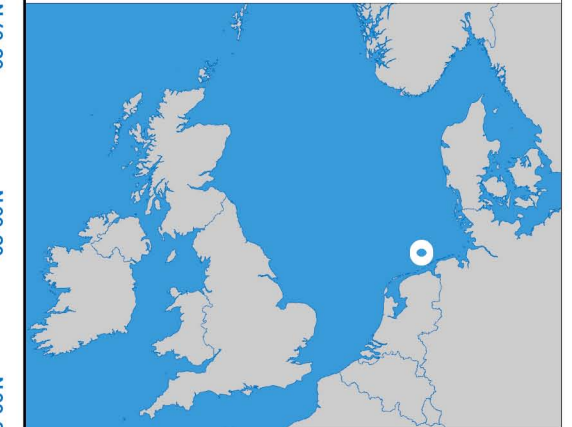
The closer to the surface a subsea cable is lifted when fouled by fishing gear, the more danger there is to the fishing vessel. In the interests of fishing safety and to prevent damage to subsea structures, fishermen are advised to exercise caution when fishing in the vicinity of subsea cables and renewable energy structures. Loss of gear, fishing time and catch can result if a trawler snags a subsea structure and there is serious risk of loss of life.



**Borkum Riffgrund
Offshore Wind Farm**

- Site boundary
- Export cable
- Wind turbine
- Inter array cable
- Buoy
- Power cable
- Clump weight
- Out of Use cable

Grey coloured features displayed on this chart represent additional offshore wind farm structures. Visit www.kis-orca.org/map for more info.

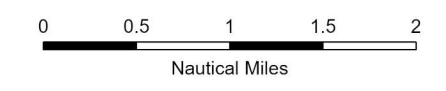


Projection: World_Mercator
Spheroid: GCS_WGS_1984
Datum: D_WGS_1984

This data is issued as a guide only. Seafish, cable / structure owners and Distributors accept no responsibility for any inaccuracies however caused.

Please be aware that other structures & cables may exist in addition to those shown on this chart.

© British Crown Copyright, 2025/26.
All rights reserved.
Not to be used for Navigation.



Scale @ A3:
1:75,000

NOT TO BE USED FOR NAVIGATION. EMERGENCY CONTACT NUMBER +44(0) 2078 111170

Asset locations

Borkum Riffgrund 1 Extents

A	53°59.666'N 06°29.467'E
B	53°59.666'N 06°33.600'E
C	53°57.650'N 06°37.016'E
D	53°56.417'N 06°37.016'E
E	53°56.417'N 06°32.900'E
F	53°58.433'N 06°29.483'E

Borkum Riffgrund 1 Infrastructure

BK1 0035	53°57.440'N 06°31.120'E
BKR 01 ALPHA	53°59.226'N 06°29.462'E
BKR 01 BRAVO	53°59.234'N 06°29.485'E
BKR 01 CHARLIE	53°59.534'N 06°30.153'E
BKR 01 DELTA	53°59.547'N 06°30.169'E

Borkum Riffgrund 1 Turbines

G01	53°59.658'N 06°29.473'E
G02	53°59.255'N 06°29.475'E
G03	53°58.850'N 06°29.475'E
G04	53°58.447'N 06°29.476'E
H01	53°59.660'N 06°30.160'E
H02	53°59.255'N 06°30.160'E
H03	53°58.852'N 06°30.162'E
H04	53°58.447'N 06°30.162'E
H05	53°58.042'N 06°30.164'E
I01	53°59.660'N 06°30.845'E
I02	53°59.255'N 06°30.847'E
I03	53°58.852'N 06°30.846'E
I04	53°58.447'N 06°30.849'E
I05	53°58.043'N 06°30.848'E
I06	53°57.639'N 06°30.850'E
J01	53°59.660'N 06°31.531'E
J02	53°59.257'N 06°31.533'E
J03	53°58.852'N 06°31.533'E
J04	53°58.448'N 06°31.534'E
J05	53°58.043'N 06°31.535'E
J06	53°57.639'N 06°31.535'E
J07	53°57.235'N 06°31.536'E
K01	53°59.662'N 06°32.219'E
K02	53°59.257'N 06°32.219'E
K03	53°58.852'N 06°32.220'E
K04	53°58.449'N 06°32.220'E
K05	53°58.043'N 06°32.220'E
K06	53°57.640'N 06°32.222'E
K07	53°57.235'N 06°32.222'E
K08	53°56.830'N 06°32.222'E

Borkum Riffgrund 1 Turbines

L01	53°59.662'N 06°32.905'E
L02	53°59.257'N 06°32.905'E
L03	53°58.853'N 06°32.905'E
L04	53°58.449'N 06°32.905'E
L05	53°58.043'N 06°32.907'E
L06	53°57.640'N 06°32.907'E
L07	53°57.235'N 06°32.906'E
L08	53°56.832'N 06°32.908'E
L09	53°56.426'N 06°32.908'E
M01	53°59.662'N 06°33.590'E
M02	53°59.257'N 06°33.592'E
M03	53°58.853'N 06°33.592'E
M04	53°58.448'N 06°33.591'E
M05	53°58.046'N 06°33.593'E
M06	53°57.640'N 06°33.592'E
M07	53°57.235'N 06°33.593'E
M08	53°56.832'N 06°33.593'E
M09	53°56.427'N 06°33.593'E
N02	53°59.257'N 06°34.277'E
N03	53°58.853'N 06°34.276'E
N04	53°58.448'N 06°34.277'E
N05	53°58.045'N 06°34.278'E
N06	53°57.640'N 06°34.278'E
N07	53°57.235'N 06°34.278'E
N08	53°56.832'N 06°34.278'E
N09	53°56.427'N 06°34.278'E

Borkum Riffgrund 1 Turbines

O07	53°57.235'N 06°34.963'E
O08	53°56.831'N 06°34.963'E
O09	53°56.427'N 06°34.963'E
P04	53°58.448'N 06°35.650'E
P05	53°58.045'N 06°35.650'E
P06	53°57.640'N 06°35.650'E
P07	53°57.237'N 06°35.650'E
P08	53°56.832'N 06°35.650'E
P09	53°56.427'N 06°35.650'E
Q05	53°58.045'N 06°36.335'E
Q06	53°57.640'N 06°36.335'E
Q07	53°57.237'N 06°36.335'E
Q08	53°56.832'N 06°36.335'E
Q09	53°56.427'N 06°36.335'E
R06	53°57.640'N 06°37.020'E
R07	53°57.235'N 06°37.020'E
R08	53°56.832'N 06°37.020'E
R09	53°56.427'N 06°37.020'E



Contact us

- ☎ +44(0)131 380 4545
- ✉ kingfisher@seafish.co.uk
- 🐦 @kingfisherinfo
- 📘 @KingfisherInformation
- 🌐 www.kis-orca.org



Asset locations

Borkum Riffgrund 2 Extents

G	53°59.463'N 06°26.488'E
H	53°59.463'N 06°28.422'E
I	53°58.439'N 06°28.425'E
J	53°58.038'N 06°28.792'E
K	53°57.667'N 06°28.793'E
L	53°57.204'N 06°30.508'E
M	53°55.967'N 06°33.199'E
N	53°55.930'N 06°36.235'E

Borkum Riffgrund 2 Extents

O	53°54.985'N 06°29.344'E
P	53°57.198'N 06°26.351'E
Q	53°58.036'N 06°25.449'E
R	53°59.237'N 06°25.358'E
S	53°59.258'N 06°35.649'E
T	53°59.257'N 06°37.021'E
U	53°58.449'N 06°37.021'E

Borkum Riffgrund 2 Infrastructure

BK2 0079	53°58.523'N 06°26.694'E
BKR 02 ALPHA	53°59.597'N 06°26.044'E
BKR 02 BRAVO	53°58.712'N 06°26.359'E
BKR 02 CHARLIE	53°58.708'N 06°28.331'E
BKR 02 DELTA	53°58.098'N 06°37.129'E

Borkum Riffgrund 2 Turbines

A32	53°59.237'N 06°25.358'E
A33	53°58.837'N 06°25.386'E
A34	53°58.436'N 06°25.416'E
A35	53°58.036'N 06°25.449'E
B33	53°58.837'N 06°26.046'E
B34	53°58.436'N 06°26.047'E
B35	53°58.035'N 06°26.064'E
B36	53°57.636'N 06°25.871'E
C31	53°59.463'N 06°26.488'E
C35	53°58.036'N 06°26.732'E
C37	53°57.198'N 06°26.351'E
C38	53°56.940'N 06°26.700'E
D31	53°59.463'N 06°27.141'E
D33	53°58.825'N 06°27.417'E
D35	53°58.037'N 06°27.420'E
D37	53°57.231'N 06°27.209'E
D39	53°56.405'N 06°27.426'E
E31	53°59.463'N 06°28.422'E
E33	53°58.826'N 06°28.424'E
E34	53°58.439'N 06°28.425'E
E36	53°57.636'N 06°28.108'E
E38	53°56.822'N 06°27.825'E
E39	53°56.405'N 06°28.111'E
E40	53°55.987'N 06°27.990'E
F35	53°58.038'N 06°28.792'E
F36	53°57.667'N 06°28.793'E
F40	53°55.988'N 06°28.797'E
F41	53°55.617'N 06°28.490'E
F42	53°55.301'N 06°28.917'E
G38	53°56.823'N 06°29.481'E

Borkum Riffgrund 2 Turbines

G39	53°56.407'N 06°29.485'E
G40	53°55.988'N 06°29.483'E
G41	53°55.570'N 06°29.484'E
G43	53°54.985'N 06°29.344'E
H42	53°55.053'N 06°30.070'E
I37	53°57.204'N 06°30.508'E
I38	53°56.823'N 06°30.852'E
I39	53°56.405'N 06°30.852'E
I40	53°55.988'N 06°30.853'E
I41	53°55.569'N 06°30.856'E
I42	53°55.165'N 06°30.855'E
J41	53°55.260'N 06°31.523'E
K39	53°56.406'N 06°32.223'E
K40	53°55.904'N 06°32.375'E
K41	53°55.355'N 06°32.191'E
L40	53°55.967'N 06°33.199'E
L41	53°55.450'N 06°32.859'E
M41	53°55.545'N 06°33.527'E
N40	53°55.640'N 06°34.196'E
O40	53°55.735'N 06°34.864'E
P32	53°59.258'N 06°35.649'E
P40	53°55.832'N 06°35.550'E
Q40	53°55.930'N 06°36.235'E
R32	53°59.257'N 06°37.021'E
R33	53°58.853'N 06°37.022'E
R34	53°58.449'N 06°37.021'E



Contact us

-  +44(0)131 380 4545
-  kingfisher@seafish.co.uk
-  @kingfisherinfo
-  @KingfisherInformation
-  www.kis-orca.org

