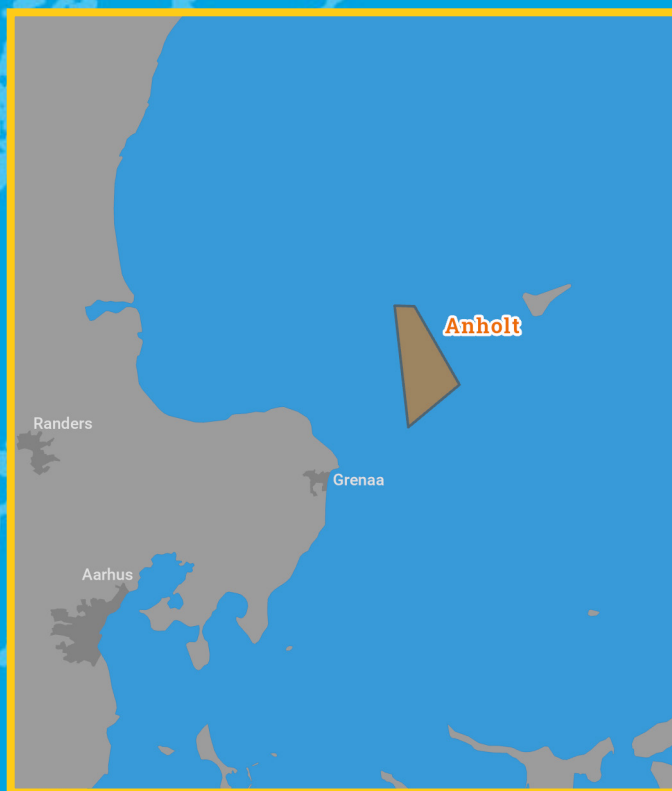




Kingfisher Wind farm Chart



Anholt
Offshore wind farm
January 2026



Emergency contact number
+45(0) 9955 9698

Description

The Anholt Wind Farm is operated by Orsted. It is situated approximately 15 km from shore in the Kattegat, off the coast of Jutland, Denmark. The wind farm is fully operational and has 111 turbines, a total capacity of 400 MW and covers an area of approximately 145 km².

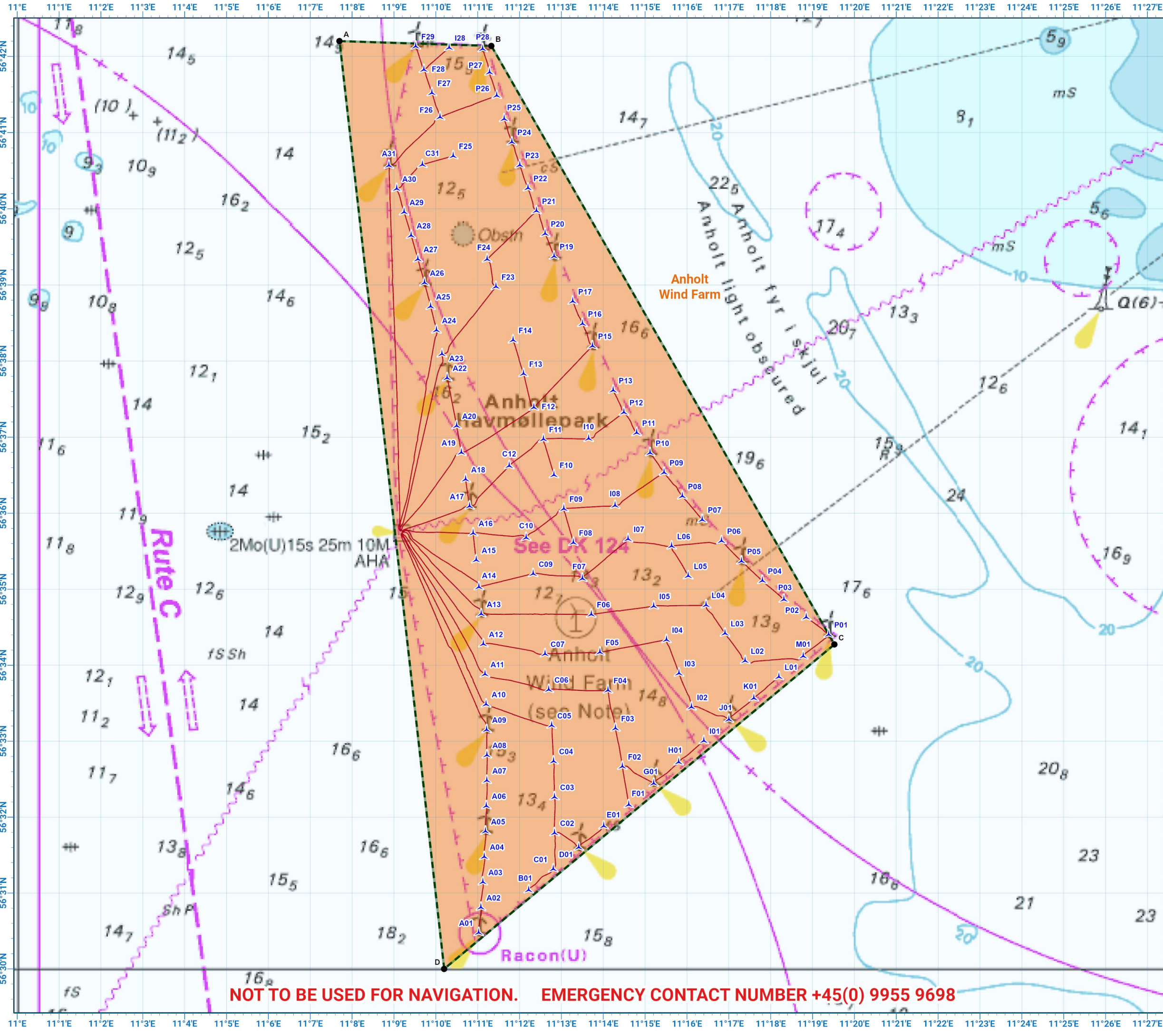
Emergency procedures

1. If you suspect you have snagged a subsea cable or renewable energy structure, DO NOT endanger your vessel and crew by attempting to recover your gear.
2. Carefully plot your vessel's position as accurately as possible.
3. Advise the Coastguard of your situation, and call the 24 hour Emergency Number and state that an incident is occurring concerning a subsea cable or renewable energy structure.

Reducing the risks whilst fishing

To reduce the risks of fishing near offshore structures, it is essential to be up to date with KIS-ORCA information. KIS-ORCA information is easy to install on your vessel's fishing plotter and ensures skippers are able to make informed decisions for their safety.

The closer to the surface a subsea cable is lifted when fouled by fishing gear, the more danger there is to the fishing vessel. In the interests of fishing safety and to prevent damage to subsea structures, fishermen are advised to exercise caution when fishing in the vicinity of subsea cables and renewable energy structures. Loss of gear, fishing time and catch can result if a trawler snags a subsea structure and there is serious risk of loss of life.



NOT TO BE USED FOR NAVIGATION. EMERGENCY CONTACT NUMBER +45(0) 9955 9698

**Anholt
Offshore Wind Farm**

- Site boundary
- Inter array cable
- Wind turbine

Grey coloured features displayed on this chart represent additional offshore wind farm structures. Visit www.kis-orca.org/map for more info.

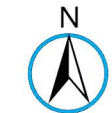
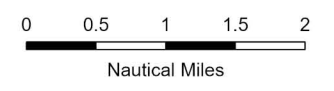


Projection: World_Mercator
Spheroid: GCS_WGS_1984
Datum: D_WGS_1984

This data is issued as a guide only.
Seafish, cable / structure owners and Distributors
accept no responsibility for any inaccuracies
however caused.

Please be aware that other structures & cables
may exist in addition to those shown on this chart.

© British Crown Copyright, 2025/26.
All rights reserved.
Not to be used for Navigation.



Scale @ A3:
1:100,000

Asset locations

Extents

A	56°42.200'N 11°07.700'E
B	56°42.137'N 11°11.327'E
C	56°34.274'N 11°19.523'E
D	56°30.000'N 11°10.200'E

Turbines

A01	56°30.477'N 11°11.026'E
A02	56°30.810'N 11°11.078'E
A03	56°31.144'N 11°11.123'E
A04	56°31.478'N 11°11.159'E
A05	56°31.813'N 11°11.187'E
A06	56°32.147'N 11°11.207'E
A07	56°32.482'N 11°11.218'E
A08	56°32.817'N 11°11.221'E
A09	56°33.151'N 11°11.215'E
A10	56°33.486'N 11°11.202'E
A11	56°33.882'N 11°11.174'E
A12	56°34.279'N 11°11.136'E
A13	56°34.674'N 11°11.085'E
A14	56°35.030'N 11°11.030'E
A15	56°35.384'N 11°10.965'E
A16	56°35.738'N 11°10.891'E
A17	56°36.092'N 11°10.807'E
A18	56°36.445'N 11°10.713'E
A19	56°36.797'N 11°10.610'E
A20	56°37.148'N 11°10.498'E
A22	56°37.778'N 11°10.272'E
A23	56°38.092'N 11°10.148'E
A24	56°38.405'N 11°10.016'E
A25	56°38.717'N 11°09.876'E
A26	56°39.029'N 11°09.729'E
A27	56°39.339'N 11°09.574'E
A28	56°39.649'N 11°09.412'E
A29	56°39.956'N 11°09.242'E
A30	56°40.263'N 11°09.065'E
A31	56°40.568'N 11°08.880'E

Turbines

B01	56°31.039'N 11°12.220'E
C01	56°31.315'N 11°12.806'E
C02	56°31.792'N 11°12.837'E
C03	56°32.265'N 11°12.836'E
C04	56°32.737'N 11°12.813'E
C05	56°33.208'N 11°12.767'E
C06	56°33.679'N 11°12.699'E
C07	56°34.149'N 11°12.609'E
C09	56°35.203'N 11°12.325'E
C10	56°35.679'N 11°12.158'E
C12	56°36.623'N 11°11.755'E
C31	56°40.579'N 11°09.679'E
D01	56°31.601'N 11°13.414'E
E01	56°31.882'N 11°14.011'E
F01	56°32.163'N 11°14.609'E
F02	56°32.667'N 11°14.457'E
F03	56°33.170'N 11°14.292'E
F04	56°33.671'N 11°14.113'E
F05	56°34.171'N 11°13.921'E
F06	56°34.669'N 11°13.715'E
F07	56°35.141'N 11°13.501'E
F08	56°35.613'N 11°13.287'E
F09	56°36.059'N 11°13.058'E
F10	56°36.503'N 11°12.824'E
F11	56°36.973'N 11°12.571'E
F12	56°37.391'N 11°12.343'E
F13	56°37.833'N 11°12.096'E
F14	56°38.275'N 11°11.845'E
F23	56°38.977'N 11°11.436'E
F24	56°39.337'N 11°11.225'E

Turbines

F25	56°40.693'N 11°10.416'E
F26	56°41.204'N 11°10.102'E
F27	56°41.520'N 11°09.907'E
F28	56°41.825'N 11°09.714'E
F29	56°42.131'N 11°09.521'E
G01	56°32.444'N 11°15.207'E
H01	56°32.725'N 11°15.804'E
I01	56°33.005'N 11°16.403'E
I02	56°33.449'N 11°16.107'E
I03	56°33.893'N 11°15.810'E
I04	56°34.335'N 11°15.510'E
I05	56°34.778'N 11°15.207'E
I07	56°35.661'N 11°14.593'E
I08	56°36.101'N 11°14.282'E
I10	56°36.981'N 11°13.653'E
I28	56°42.114'N 11°10.320'E
J01	56°33.286'N 11°17.001'E
K01	56°33.566'N 11°17.600'E
L01	56°33.847'N 11°18.198'E
L02	56°34.058'N 11°17.391'E
L03	56°34.420'N 11°16.910'E
L04	56°34.792'N 11°16.456'E
L05	56°35.175'N 11°16.030'E
L06	56°35.567'N 11°15.633'E
M01	56°34.120'N 11°18.779'E
P01	56°34.404'N 11°19.385'E
P02	56°34.631'N 11°18.849'E
P03	56°34.866'N 11°18.315'E
P04	56°35.112'N 11°17.801'E
P05	56°35.369'N 11°17.303'E



Contact us

- ☎ +44(0)131 380 4545
- ✉ kingfisher@seafish.co.uk
- 🐦 @kingfisherinfo
- 📘 @KingfisherInformation
- 🌐 www.kis-orca.org



Asset locations

Turbines

P06	56°35.636'N 11°16.825'E
P07	56°35.914'N 11°16.365'E
P08	56°36.224'N 11°15.891'E
P09	56°36.535'N 11°15.453'E
P10	56°36.793'N 11°15.119'E
P11	56°37.057'N 11°14.798'E
P12	56°37.326'N 11°14.494'E
P13	56°37.615'N 11°14.237'E
P15	56°38.198'N 11°13.741'E
P16	56°38.491'N 11°13.503'E
P17	56°38.784'N 11°13.271'E
P19	56°39.376'N 11°12.825'E
P20	56°39.673'N 11°12.612'E
P21	56°39.972'N 11°12.404'E
P22	56°40.272'N 11°12.202'E
P23	56°40.574'N 11°12.006'E
P24	56°40.876'N 11°11.816'E
P25	56°41.180'N 11°11.633'E
P26	56°41.485'N 11°11.456'E
P27	56°41.791'N 11°11.284'E
P28	56°42.098'N 11°11.120'E



Contact us

- +44(0)131 380 4545
- kingfisher@seafish.co.uk
- @kingfisherinfo
- @KingfisherInformation
- www.kis-orca.org

