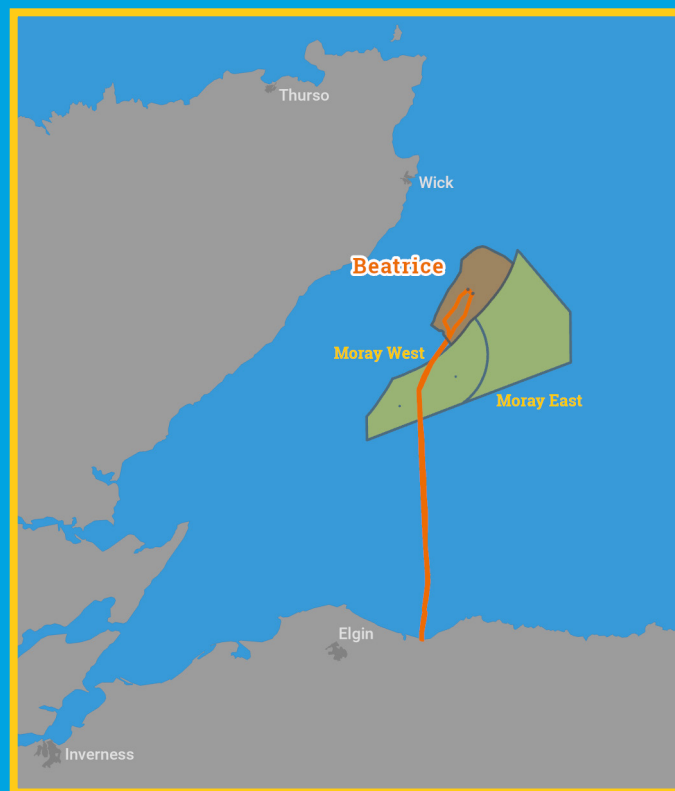




Kingfisher Wind farm Chart



Beatrice
Offshore wind farm
January 2026



Description

The Beatrice Wind Farm is operated by SSE Renewables. It is situated approximately 13 km from shore in the Northern North Sea, off the coast of Caithness. The wind farm is fully operational and has 84 turbines, a total capacity of 587 MW and covers an area of approximately 132 km².

Emergency procedures

1. If you suspect you have snagged a subsea cable or renewable energy structure, DO NOT endanger your vessel and crew by attempting to recover your gear.
2. Carefully plot your vessel's position as accurately as possible.
3. Advise the Coastguard of your situation, and call the 24 hour Emergency Number and state that an incident is occurring concerning a subsea cable or renewable energy structure.

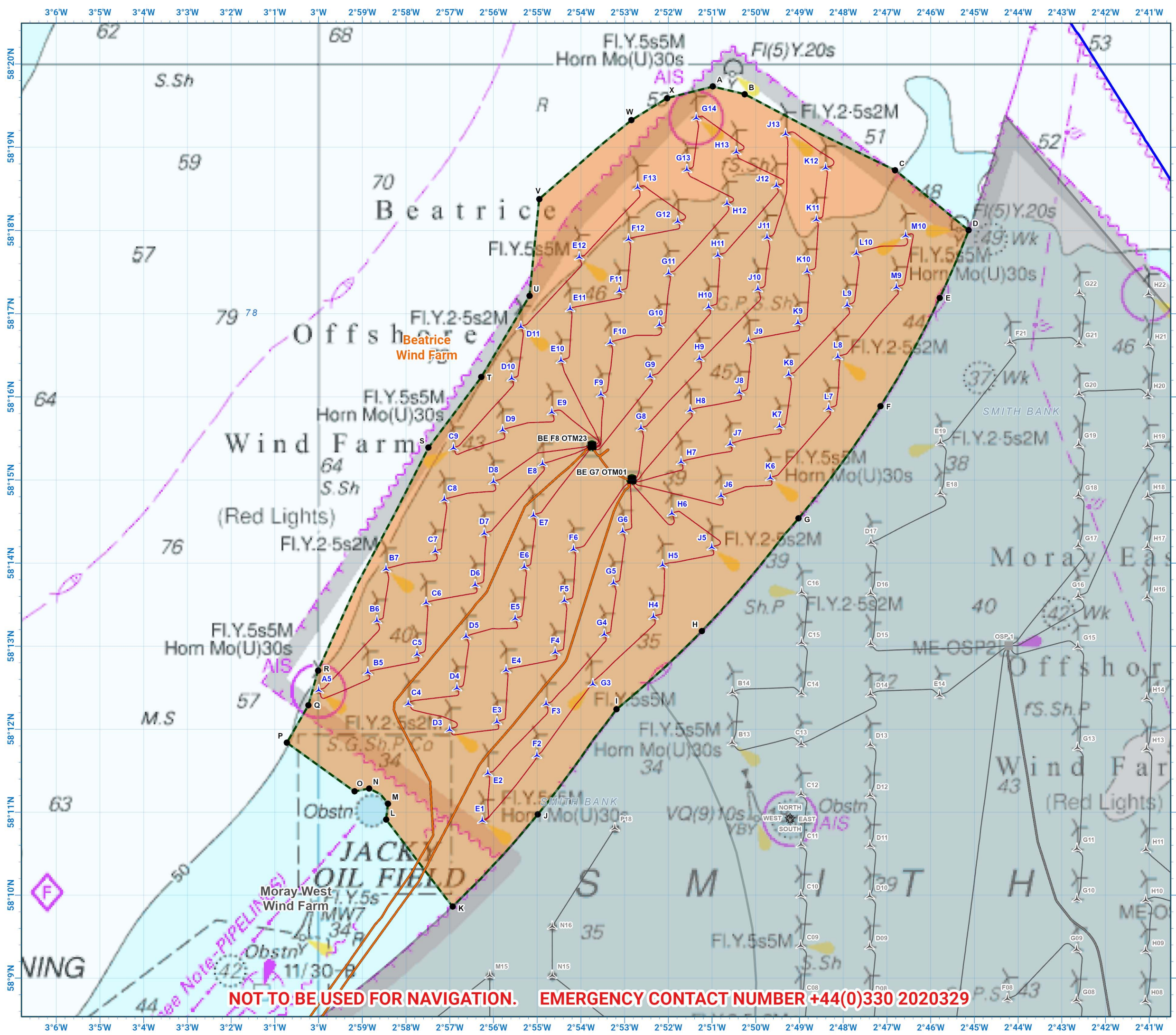
Reducing the risks whilst fishing

To reduce the risks of fishing near offshore structures, it is essential to be up to date with KIS-ORCA information. KIS-ORCA information is easy to install on your vessel's fishing plotter and ensures skippers are able to make informed decisions for their safety.

The closer to the surface a subsea cable is lifted when fouled by fishing gear, the more danger there is to the fishing vessel. In the interests of fishing safety and to prevent damage to subsea structures, fishermen are advised to exercise caution when fishing in the vicinity of subsea cables and renewable energy structures. Loss of gear, fishing time and catch can result if a trawler snags a subsea structure and there is serious risk of loss of life.



Emergency contact number
+44(0)330 2020329

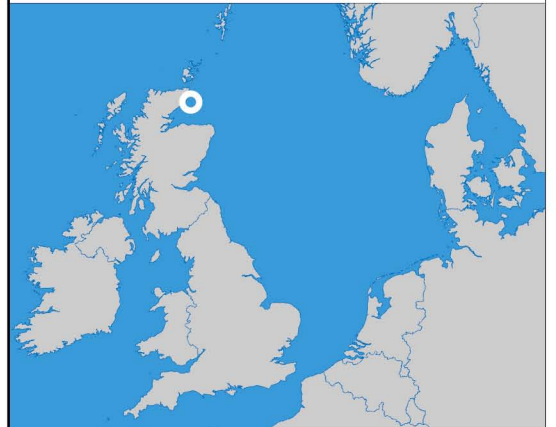


NOT TO BE USED FOR NAVIGATION. EMERGENCY CONTACT NUMBER +44(0)330 2020329

Beatrice Offshore Wind Farm

- Site boundary
- Wind turbine
- Substation
- Export cable
- Inter array cable
- Power cable

Grey coloured features displayed on this chart represent additional offshore wind farm structures. Visit www.kis-orca.org/map for more info.

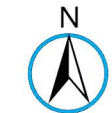
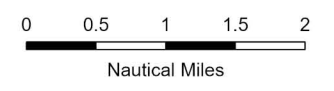


Projection: World_Mercator
Spheroid: GCS_WGS_1984
Datum: D_WGS_1984

This data is issued as a guide only. Seafish, cable / structure owners and Distributors accept no responsibility for any inaccuracies however caused.

Please be aware that other structures & cables may exist in addition to those shown on this chart.

© British Crown Copyright, 2025/26. All rights reserved. Not to be used for Navigation.



Scale @ A3: 1:100,000

Asset locations

Extents

A	58°19.730'N 02°50.983'W
B	58°19.637'N 02°50.254'W
C	58°18.724'N 02°46.814'W
D	58°18.004'N 02°45.131'W
E	58°17.190'N 02°45.790'W
F	58°15.888'N 02°47.147'W
G	58°14.538'N 02°49.022'W
H	58°13.182'N 02°51.235'W

Extents

I	58°12.240'N 02°53.185'W
J	58°10.974'N 02°54.983'W
K	58°09.864'N 02°56.935'W
L	58°10.913'N 02°58.456'W
M	58°11.104'N 02°58.411'W
N	58°11.287'N 02°58.846'W
O	58°11.251'N 02°59.176'W
P	58°11.840'N 03°00.723'W

Extents

Q	58°12.290'N 03°00.236'W
R	58°12.708'N 03°00.012'W
S	58°15.390'N 02°57.485'W
T	58°16.238'N 02°56.281'W
U	58°17.216'N 02°55.175'W
V	58°18.376'N 02°54.952'W
W	58°19.324'N 02°52.844'W
X	58°19.590'N 02°52.027'W

Turbines

BE-A5	58°12.471'N 02°59.996'W
BE-B5	58°12.687'N 02°58.873'W
BE-B6	58°13.308'N 02°58.664'W
BE-B7	58°13.929'N 02°58.456'W
BE-C4	58°12.307'N 02°57.948'W
BE-C5	58°12.902'N 02°57.749'W
BE-C6	58°13.524'N 02°57.541'W
BE-C7	58°14.144'N 02°57.332'W
BE-C8	58°14.766'N 02°57.124'W
BE-C9	58°15.386'N 02°56.915'W
BE-D3	58°11.995'N 02°57.002'W
BE-D4	58°12.497'N 02°56.834'W
BE-D5	58°13.117'N 02°56.626'W
BE-D6	58°13.739'N 02°56.417'W
BE-D7	58°14.359'N 02°56.209'W
BE-D8	58°14.981'N 02°55.999'W
BE-D9	58°15.602'N 02°55.790'W
BE-D10	58°16.223'N 02°55.582'W
BE-D11	58°16.844'N 02°55.373'W
BE-E1	58°10.900'N 02°56.256'W
BE-E2	58°11.470'N 02°56.128'W
BE-E3	58°12.090'N 02°55.920'W
BE-E4	58°12.712'N 02°55.710'W
BE-E5	58°13.333'N 02°55.502'W
BE-E6	58°13.954'N 02°55.293'W
BE-E7	58°14.575'N 02°55.084'W
BE-E8	58°15.196'N 02°54.875'W
BE-E9	58°15.817'N 02°54.665'W
BE-E10	58°16.438'N 02°54.456'W
BE-E11	58°17.059'N 02°54.247'W

Turbines

BE-E12	58°17.680'N 02°54.037'W
BE-F2	58°11.685'N 02°55.005'W
BE-F3	58°12.306'N 02°54.796'W
BE-F4	58°12.927'N 02°54.588'W
BE-F5	58°13.548'N 02°54.378'W
BE-F6	58°14.168'N 02°54.169'W
BE-F9	58°16.031'N 02°53.540'W
BE-F10	58°16.653'N 02°53.330'W
BE-F11	58°17.274'N 02°53.120'W
BE-F12	58°17.894'N 02°52.911'W
BE-F13	58°18.516'N 02°52.701'W
BE-G3	58°12.544'N 02°53.726'W
BE-G4	58°13.142'N 02°53.464'W
BE-G5	58°13.762'N 02°53.254'W
BE-G6	58°14.384'N 02°53.044'W
BE-G8	58°15.625'N 02°52.625'W
BE-G9	58°16.247'N 02°52.415'W
BE-G10	58°16.867'N 02°52.204'W
BE-G11	58°17.488'N 02°51.994'W
BE-G12	58°18.109'N 02°51.784'W
BE-G13	58°18.730'N 02°51.574'W
BE-G14	58°19.351'N 02°51.362'W
BE-H4	58°13.356'N 02°52.339'W
BE-H5	58°13.977'N 02°52.130'W
BE-H6	58°14.598'N 02°51.920'W
BE-H7	58°15.219'N 02°51.709'W
BE-H8	58°15.840'N 02°51.499'W
BE-H9	58°16.461'N 02°51.289'W
BE-H10	58°17.082'N 02°51.079'W
BE-H11	58°17.703'N 02°50.867'W

Turbines

BE-H12	58°18.324'N 02°50.657'W
BE-H13	58°18.944'N 02°50.446'W
BE-J5	58°14.192'N 02°51.005'W
BE-J6	58°14.812'N 02°50.795'W
BE-J7	58°15.433'N 02°50.585'W
BE-J8	58°16.055'N 02°50.373'W
BE-J9	58°16.675'N 02°50.163'W
BE-J10	58°17.296'N 02°49.952'W
BE-J11	58°17.917'N 02°49.741'W
BE-J12	58°18.538'N 02°49.530'W
BE-J13	58°19.159'N 02°49.319'W
BE-K6	58°15.027'N 02°49.669'W
BE-K7	58°15.648'N 02°49.459'W
BE-K8	58°16.269'N 02°49.247'W
BE-K9	58°16.890'N 02°49.036'W
BE-K10	58°17.510'N 02°48.825'W
BE-K11	58°18.131'N 02°48.614'W
BE-K12	58°18.752'N 02°48.403'W
BE-L7	58°15.862'N 02°48.333'W
BE-L8	58°16.482'N 02°48.122'W
BE-L9	58°17.104'N 02°47.910'W
BE-L10	58°17.724'N 02°47.698'W
BE-M9	58°17.317'N 02°46.784'W
BE-M10	58°17.938'N 02°46.571'W

Infrastructure

BE F8 OTM23	58°15.411'N 02°53.750'W
BE G7 OTM01	58°15.004'N 02°52.834'W



Contact us

- +44(0)131 380 4545
- kingfisher@seafish.co.uk
- @kingfisherinfo
- @KingfisherInformation
- www.kis-orca.org

