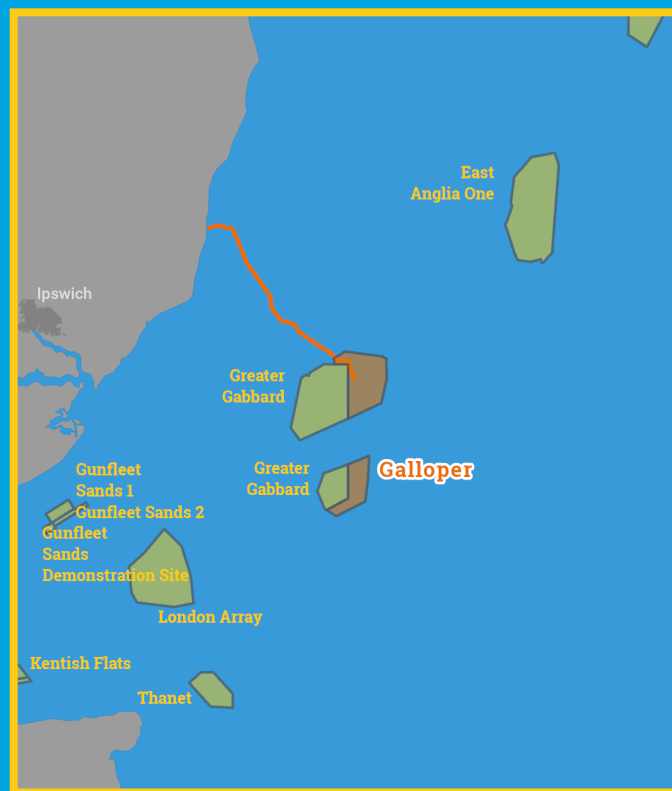




# Kingfisher Wind farm Chart



**Galloper**  
**Offshore wind farm**  
January 2026



**Emergency contact number**  
**+44(0)845 0782922**

## Description

The Galloper Wind Farm is operated by RWE Renewables. It is situated approximately 28 km from shore in the Southern North Sea, off the South East coast of Essex. The wind farm is fully operational and has 56 turbines, a total capacity of 353 MW and covers an area of approximately 114 km<sup>2</sup>.

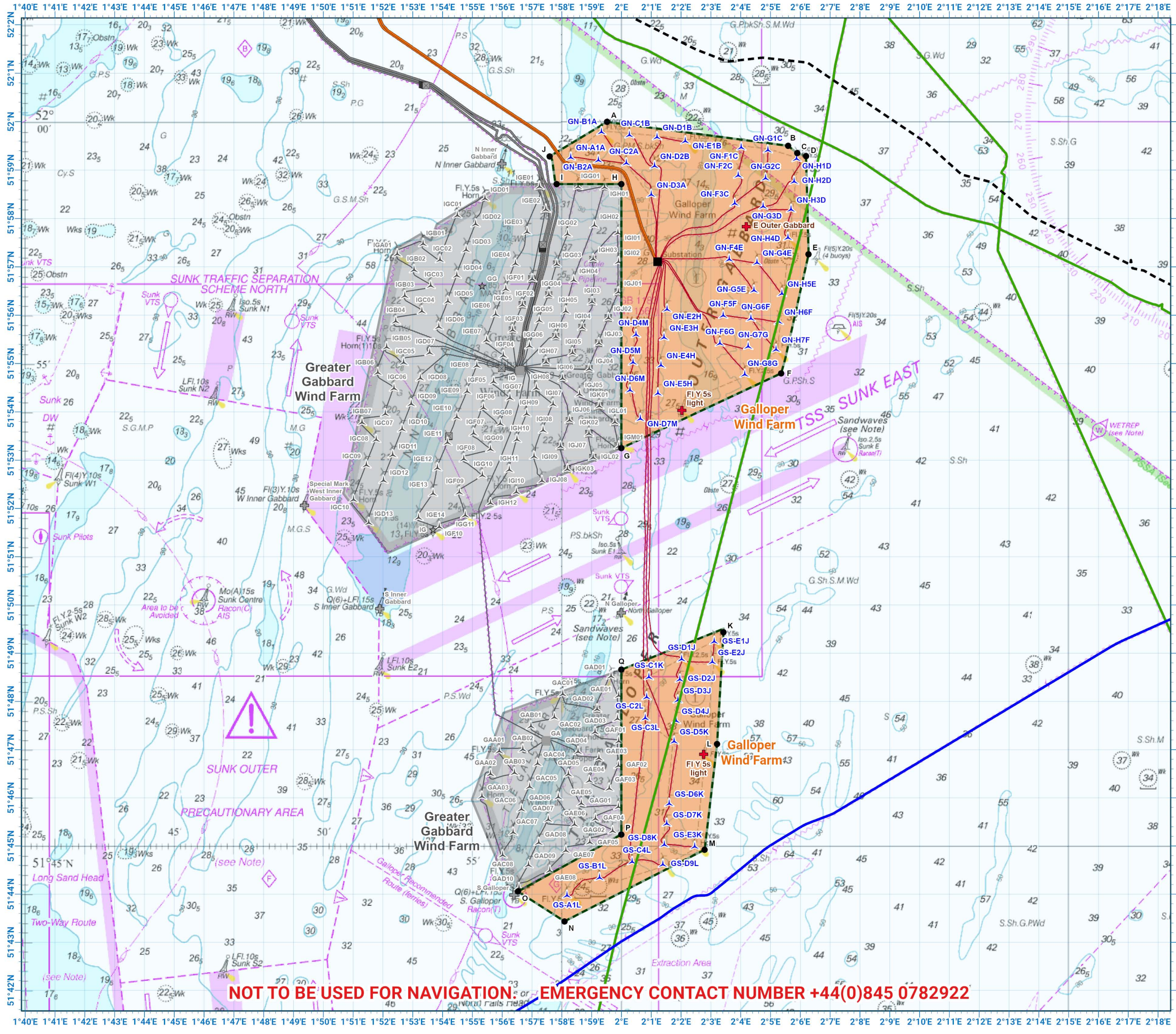
## Emergency procedures

1. If you suspect you have snagged a subsea cable or renewable energy structure, DO NOT endanger your vessel and crew by attempting to recover your gear.
2. Carefully plot your vessel's position as accurately as possible.
3. Advise the Coastguard of your situation, and call the 24 hour Emergency Number and state that an incident is occurring concerning a subsea cable or renewable energy structure.

## Reducing the risks whilst fishing

To reduce the risks of fishing near offshore structures, it is essential to be up to date with KIS-ORCA information. KIS-ORCA information is easy to install on your vessel's fishing plotter and ensures skippers are able to make informed decisions for their safety.

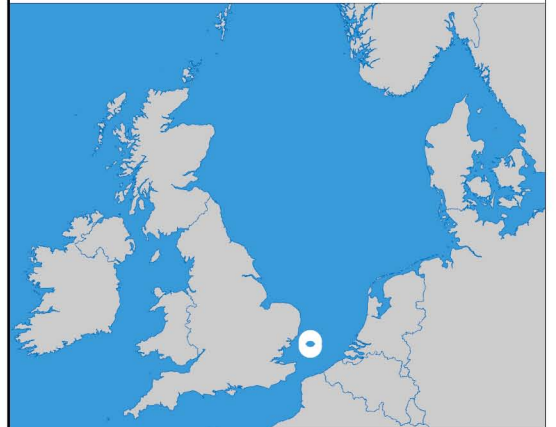
The closer to the surface a subsea cable is lifted when fouled by fishing gear, the more danger there is to the fishing vessel. In the interests of fishing safety and to prevent damage to subsea structures, fishermen are advised to exercise caution when fishing in the vicinity of subsea cables and renewable energy structures. Loss of gear, fishing time and catch can result if a trawler snags a subsea structure and there is serious risk of loss of life.



**Galloper  
Offshore Wind Farm**

- Site boundary
- Wind turbine
- Buoy
- Substation
- Export cable
- Inter array cable
- Telecomms cable
- Power cable
- Out of Use cable

Grey coloured features displayed on this chart represent additional offshore wind farm structures. Visit [www.kis-orca.org/map](http://www.kis-orca.org/map) for more info.

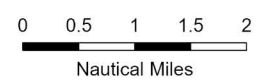


Projection: World\_Mercator  
Spheroid: GCS\_WGS\_1984  
Datum: D\_WGS\_1984

This data is issued as a guide only. Seafish, cable / structure owners and Distributors accept no responsibility for any inaccuracies however caused.

Please be aware that other structures & cables may exist in addition to those shown on this chart.

© British Crown Copyright, 2025/26.  
All rights reserved.  
Not to be used for Navigation.



Scale @ A3:  
1:125,000

**NOT TO BE USED FOR NAVIGATION: EMERGENCY CONTACT NUMBER +44(0)845 0782922**

# Asset locations

Extents	
A	51°59.994'N 01°59.515'E
B	51°59.501'N 02°05.589'E
C	51°59.347'N 02°05.900'E
D	51°59.288'N 02°06.192'E
E	51°57.261'N 02°06.278'E
F	51°54.799'N 02°05.359'E
G	51°53.250'N 02°00.000'E
H	51°58.710'N 02°00.000'E
I	51°58.710'N 01°57.826'E

Extents	
J	51°59.284'N 01°57.595'E
K	51°49.433'N 02°03.422'E
L	51°47.115'N 02°03.208'E
M	51°44.923'N 02°02.792'E
N	51°43.435'N 01°58.090'E
O	51°44.055'N 01°56.529'E
P	51°45.240'N 02°00.000'E
Q	51°48.660'N 02°00.000'E

Infrastructure	
E Outer Gabbard	51°57.830'N 02°04.187'E
FI Y 5s light BUOY	51°54.028'N 02°02.027'E
FI Y 5s light BUOY	51°46.902'N 02°02.756'E
SUBSTATION	51°57.106'N 02°01.213'E

Turbines	
GN-A1A	51°59.261'N 01°58.301'E
GN-B1A	51°59.786'N 01°59.328'E
GN-B2A	51°59.203'N 01°59.229'E
GN-C1B	51°59.722'N 02°00.268'E
GN-C2A	51°59.142'N 02°00.165'E
GN-D1B	51°59.680'N 02°01.196'E
GN-D2B	51°59.085'N 02°01.114'E
GN-D3A	51°58.491'N 02°00.999'E
GN-D4M	51°55.598'N 02°00.489'E
GN-D5M	51°55.023'N 02°00.390'E
GN-D6M	51°54.448'N 02°00.286'E
GN-D7M	51°53.857'N 02°00.635'E
GN-E1B	51°59.596'N 02°02.145'E
GN-E2H	51°56.120'N 02°01.531'E
GN-E3H	51°55.538'N 02°01.430'E
GN-E4H	51°54.963'N 02°01.325'E
GN-E5H	51°54.384'N 02°01.224'E
GN-F1C	51°59.467'N 02°04.019'E
GN-F2C	51°58.888'N 02°03.919'E
GN-F3C	51°58.309'N 02°03.799'E
GN-F4E	51°57.153'N 02°03.616'E
GN-F5F	51°55.991'N 02°03.413'E
GN-F6G	51°55.416'N 02°03.303'E
GN-G1C	51°59.411'N 02°04.912'E
GN-G2C	51°58.829'N 02°04.836'E
GN-G3D	51°58.247'N 02°04.755'E
GN-G4E	51°57.086'N 02°04.548'E
GN-G5E	51°56.511'N 02°04.445'E

Turbines	
GN-G6F	51°55.929'N 02°04.342'E
GN-G7G	51°55.351'N 02°04.254'E
GN-G8G	51°54.773'N 02°04.136'E
GN-H1D	51°59.232'N 02°05.876'E
GN-H2D	51°58.763'N 02°05.794'E
GN-H3D	51°58.184'N 02°05.691'E
GN-H4D	51°57.603'N 02°05.587'E
GN-H5E	51°56.446'N 02°05.384'E
GN-H6F	51°55.865'N 02°05.277'E
GN-H7F	51°55.289'N 02°05.185'E
GS-A1L	51°43.972'N 01°58.174'E
GS-B1L	51°44.340'N 01°59.264'E
GS-C1K	51°48.505'N 02°00.923'E
GS-C2L	51°48.090'N 02°00.846'E
GS-C3L	51°47.655'N 02°00.801'E
GS-C4L	51°44.670'N 02°00.361'E
GS-D1J	51°48.875'N 02°02.022'E
GS-D2J	51°48.456'N 02°01.961'E
GS-D3J	51°48.023'N 02°01.893'E
GS-D4J	51°47.598'N 02°01.832'E
GS-D5K	51°47.171'N 02°01.768'E
GS-D6K	51°45.878'N 02°01.604'E
GS-D7K	51°45.463'N 02°01.522'E
GS-D8K	51°45.027'N 02°01.437'E
GS-D9L	51°44.613'N 02°01.392'E
GS-E1J	51°49.242'N 02°03.114'E
GS-E2J	51°48.817'N 02°03.052'E
GS-E3K	51°44.988'N 02°02.460'E



## Contact us

-  +44(0)131 380 4545
-  kingfisher@seafish.co.uk
-  @kingfisherinfo
-  @KingfisherInformation
-  www.kis-orca.org

