



Kingfisher Wind farm Chart



Triton Knoll
Offshore wind farm
January 2026



Emergency contact number
+44(0)800 2545 270

Description

The Triton Knoll Wind Farm is operated by RWE Renewables. It is situated approximately 33 km from shore in the Central North Sea, off the coast of Lincolnshire. The wind farm is fully operational and has 90 turbines, a total capacity of 857 MW and covers an area of approximately 149 km².

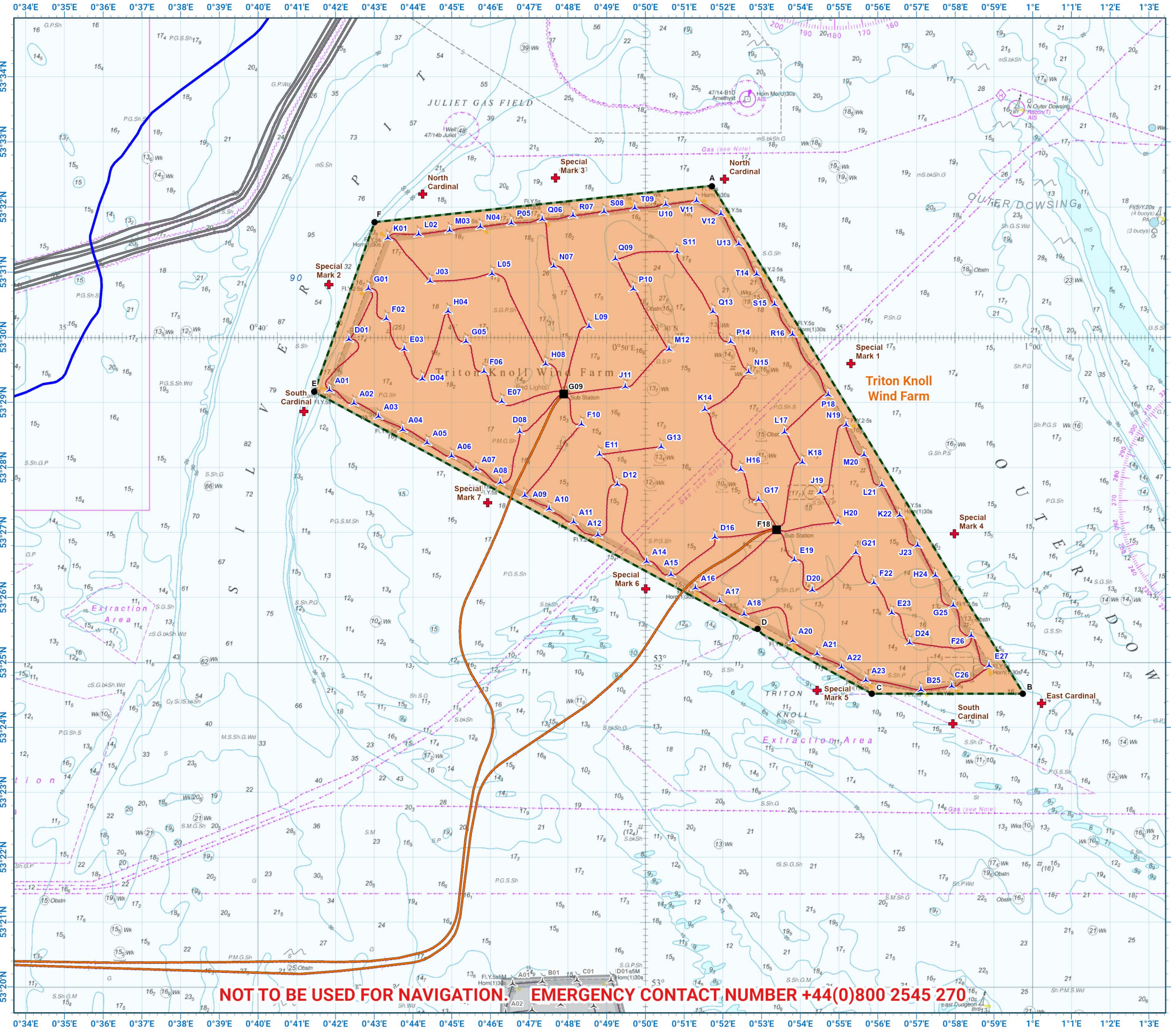
Emergency procedures

1. If you suspect you have snagged a subsea cable or renewable energy structure, DO NOT endanger your vessel and crew by attempting to recover your gear.
2. Carefully plot your vessel's position as accurately as possible.
3. Advise the Coastguard of your situation, and call the 24 hour Emergency Number and state that an incident is occurring concerning a subsea cable or renewable energy structure.

Reducing the risks whilst fishing

To reduce the risks of fishing near offshore structures, it is essential to be up to date with KIS-ORCA information. KIS-ORCA information is easy to install on your vessel's fishing plotter and ensures skippers are able to make informed decisions for their safety.

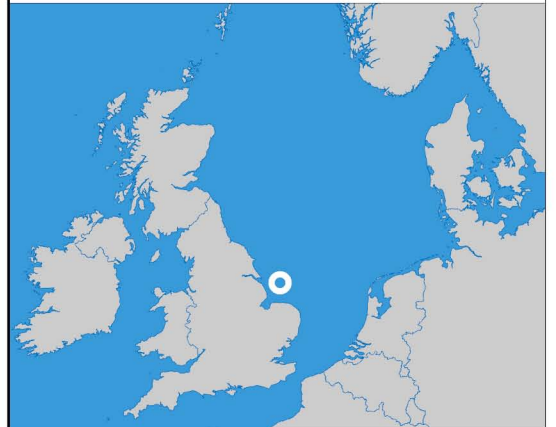
The closer to the surface a subsea cable is lifted when fouled by fishing gear, the more danger there is to the fishing vessel. In the interests of fishing safety and to prevent damage to subsea structures, fishermen are advised to exercise caution when fishing in the vicinity of subsea cables and renewable energy structures. Loss of gear, fishing time and catch can result if a trawler snags a subsea structure and there is serious risk of loss of life.



**Triton Knoll
Offshore Wind Farm**

- Site boundary
- Wind turbine
- Buoy
- Substation
- Export cable
- Inter array cable
- Power cable

Grey coloured features displayed on this chart represent additional offshore wind farm structures. Visit www.kis-orca.org/map for more info.

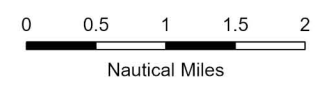


Projection: World_Mercator
Spheroid: GCS_WGS_1984
Datum: D_WGS_1984

This data is issued as a guide only. Seafish, cable / structure owners and Distributors accept no responsibility for any inaccuracies however caused.

Please be aware that other structures & cables may exist in addition to those shown on this chart.

© British Crown Copyright, 2025/26.
All rights reserved.
Not to be used for Navigation.



Scale @ A3:
1:100,000

Asset locations

Extents		Infrastructure		Infrastructure	
A	53°32.318'N 00°51.721'E	East Cardinal	53°24.369'N 01°00.228'E	Special Mark 3	53°32.444'N 00°47.678'E
B	53°24.518'N 00°59.747'E	North Cardinal	53°32.428'N 00°52.040'E	Special Mark 4	53°26.979'N 00°57.975'E
C	53°24.518'N 00°55.848'E	North Cardinal	53°32.196'N 00°44.248'E	Special Mark 5	53°24.568'N 00°54.433'E
D	53°25.517'N 00°52.895'E	South Cardinal	53°28.859'N 00°41.181'E	Special Mark 6	53°26.132'N 00°50.008'E
E	53°29.161'N 00°41.450'E	South Cardinal	53°24.054'N 00°57.936'E	Special Mark 7	53°27.457'N 00°45.927'E
F	53°31.767'N 00°43.007'E	Special Mark 1	53°29.595'N 00°55.306'E	F18 SUBSTATION	53°27.040'N 00°53.384'E
		Special Mark 2	53°30.807'N 00°41.826'E	G09 SUBSTATION	53°29.126'N 00°47.888'E

Turbines		Turbines		Turbines	
TK A01	53°29.187'N 00°41.844'E	TK E03	53°29.821'N 00°43.774'E	TK L02	53°31.582'N 00°44.146'E
TK A02	53°28.985'N 00°42.475'E	TK E07	53°29.012'N 00°46.294'E	TK L05	53°30.975'N 00°46.037'E
TK A03	53°28.782'N 00°43.105'E	TK E11	53°28.201'N 00°48.813'E	TK L09	53°30.165'N 00°48.543'E
TK A04	53°28.580'N 00°43.736'E	TK E19	53°26.577'N 00°53.846'E	TK L17	53°28.542'N 00°53.590'E
TK A05	53°28.377'N 00°44.366'E	TK E23	53°25.763'N 00°56.360'E	TK L21	53°27.729'N 00°56.105'E
TK A06	53°28.175'N 00°44.996'E	TK E27	53°24.949'N 00°58.873'E	TK M03	53°31.640'N 00°44.944'E
TK A07	53°27.972'N 00°45.626'E	TK F02	53°30.284'N 00°43.310'E	TK M12	53°29.816'N 00°50.612'E
TK A08	53°27.770'N 00°46.256'E	TK F06	53°29.474'N 00°45.831'E	TK M20	53°28.192'N 00°55.644'E
TK A09	53°27.567'N 00°46.886'E	TK F10	53°28.663'N 00°48.350'E	TK N04	53°31.697'N 00°45.741'E
TK A10	53°27.364'N 00°47.516'E	TK F22	53°26.226'N 00°55.899'E	TK N07	53°31.090'N 00°47.631'E
TK A11	53°27.162'N 00°48.145'E	TK F26	53°25.412'N 00°58.412'E	TK N15	53°29.467'N 00°52.667'E
TK A12	53°26.959'N 00°48.775'E	TK G01	53°30.746'N 00°42.847'E	TK N19	53°28.655'N 00°55.182'E
TK A14	53°26.553'N 00°50.034'E	TK G05	53°29.936'N 00°45.368'E	TK P05	53°31.755'N 00°46.539'E
TK A15	53°26.350'N 00°50.663'E	TK G13	53°28.315'N 00°50.406'E	TK P10	53°30.742'N 00°49.688'E
TK A16	53°26.147'N 00°51.292'E	TK G17	53°27.503'N 00°52.922'E	TK P14	53°29.930'N 00°52.205'E
TK A17	53°25.944'N 00°51.921'E	TK G21	53°26.690'N 00°55.437'E	TK P18	53°29.118'N 00°54.721'E
TK A18	53°25.741'N 00°52.550'E	TK G25	53°25.876'N 00°57.950'E	TK Q06	53°31.812'N 00°47.336'E
TK A20	53°25.334'N 00°53.807'E	TK H04	53°30.398'N 00°44.905'E	TK Q09	53°31.204'N 00°49.225'E
TK A21	53°25.131'N 00°54.436'E	TK H08	53°29.588'N 00°47.425'E	TK Q13	53°30.393'N 00°51.743'E
TK A22	53°24.927'N 00°55.065'E	TK H16	53°27.965'N 00°52.460'E	TK R07	53°31.869'N 00°48.133'E
TK A23	53°24.724'N 00°55.693'E	TK H20	53°27.153'N 00°54.975'E	TK R16	53°30.044'N 00°53.797'E
TK B25	53°24.577'N 00°57.116'E	TK H24	53°26.339'N 00°57.489'E	TK S08	53°31.926'N 00°48.931'E
TK C26	53°24.633'N 00°57.911'E	TK J03	53°30.861'N 00°44.442'E	TK S11	53°31.318'N 00°50.819'E
TK D01	53°29.966'N 00°42.346'E	TK J11	53°29.240'N 00°49.481'E	TK S15	53°30.506'N 00°53.336'E
TK D04	53°29.359'N 00°44.237'E	TK J19	53°27.616'N 00°54.514'E	TK T09	53°31.983'N 00°49.728'E
TK D08	53°28.549'N 00°46.757'E	TK J23	53°26.802'N 00°57.028'E	TK T14	53°30.969'N 00°52.874'E
TK D12	53°27.738'N 00°49.275'E	TK K01	53°31.525'N 00°43.349'E	TK U10	53°32.040'N 00°50.525'E
TK D16	53°26.926'N 00°51.792'E	TK K14	53°28.891'N 00°51.536'E	TK U13	53°31.432'N 00°52.412'E
TK D20	53°26.113'N 00°54.308'E	TK K18	53°28.079'N 00°54.052'E	TK V11	53°32.097'N 00°51.321'E
TK D24	53°25.300'N 00°56.822'E	TK K22	53°27.266'N 00°56.566'E	TK V12	53°31.895'N 00°51.951'E



Contact us

- +44(0)131 380 4545
- kingfisher@seafish.co.uk
- @kingfisherinfo
- @KingfisherInformation
- www.kis-orca.org

