



Kingfisher Wind farm Chart



Burbo Bank and Extension Offshore wind farm January 2026

 **KIS-ORCA**
Emergency contact number
+44(0)7795 645715

Description

The Burbo Bank Offshore Wind Farm is operated by Orsted. It is situated approximately 8 km from shore in the Eastern Irish Sea, off the North Lancashire coast. The wind farm is fully operational and has 25 turbines, a total capacity of 90 MW and covers an area of approximately 10 km². The wind farm extension is fully operational and has 32 turbines, a total capacity of 254.2 MW and covers an area of approximately 40 km².

Emergency procedures





1. If you suspect you have snagged a subsea cable or renewable energy structure, DO NOT endanger your vessel and crew by attempting to recover your gear.
2. Carefully plot your vessel's position as accurately as possible.
3. Advise the Coastguard of your situation, and call the 24 hour Emergency Number and state that an incident is occurring concerning a subsea cable or renewable energy structure.

Reducing the risks whilst fishing

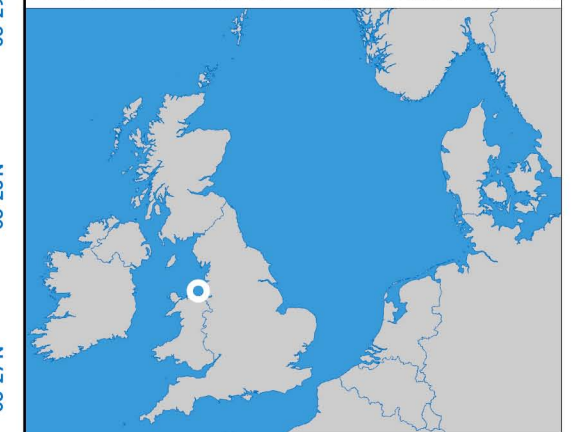
To reduce the risks of fishing near offshore structures, it is essential to be up to date with KIS-ORCA information. KIS-ORCA information is easy to install on your vessel's fishing plotter and ensures skippers are able to make informed decisions for their safety.

The closer to the surface a subsea cable is lifted when fouled by fishing gear, the more danger there is to the fishing vessel. In the interests of fishing safety and to prevent damage to subsea structures, fishermen are advised to exercise caution when fishing in the vicinity of subsea cables and renewable energy structures. Loss of gear, fishing time and catch can result if a trawler snags a subsea structure and there is serious risk of loss of life.

**Burbo Bank & Extension
Offshore Wind Farm**

-  Site boundary
-  Wind turbine
-  Buoy
-  Substation
-  Export cable
-  Inter array cable
-  Power cable

Grey coloured features displayed on this chart represent additional offshore wind farm structures. Visit www.kis-orca.org/map for more info.

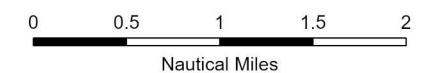


Projection: World_Mercator
Spheroid: GCS_WGS_1984
Datum: D_WGS_1984

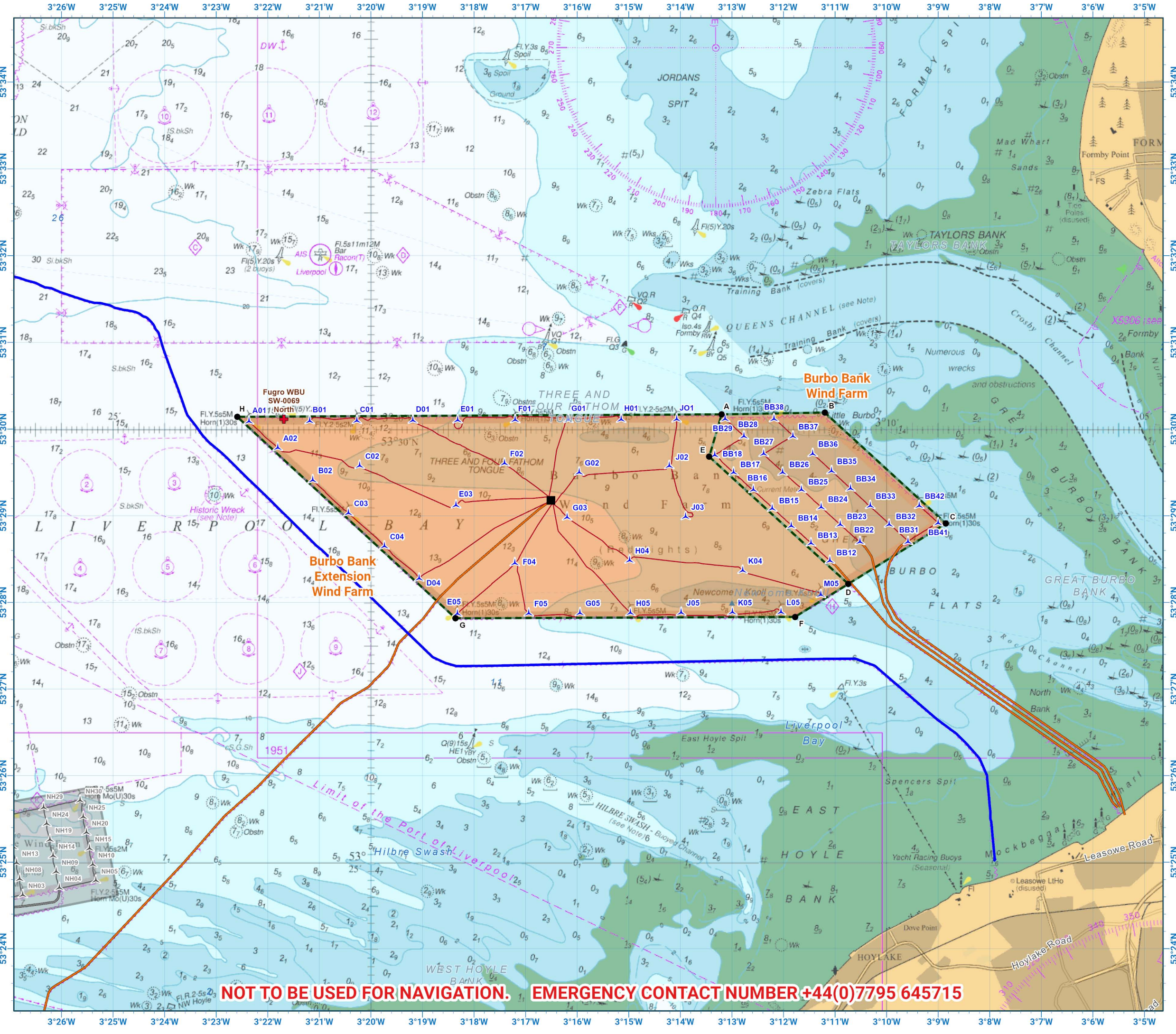
This data is issued as a guide only. Seafish, cable / structure owners and Distributors accept no responsibility for any inaccuracies however caused.

Please be aware that other structures & cables may exist in addition to those shown on this chart.

© British Crown Copyright, 2025/26.
All rights reserved.
Not to be used for Navigation.



Scale @ A3:
1:75,000



NOT TO BE USED FOR NAVIGATION. EMERGENCY CONTACT NUMBER +44(0)7795 645715

Asset locations

Burbo Bank Extents

A	53°30.170'N 03°13.200'W
B	53°30.191'N 03°11.199'W
C	53°28.911'N 03°08.851'W
D	53°28.214'N 03°10.743'W
E	53°29.682'N 03°13.440'W

Burbo Bank Extension Extents

F	53°27.833'N 03°11.777'W
G	53°27.817'N 03°18.358'W
H	53°30.142'N 03°22.592'W

Burbo Bank Infrastructure

SUBSTATION 1	53°24.810'N 03°03.457'W
--------------	-------------------------

Burbo Bank Extension Infrastructure

Fugro WBU SW-0069 North	53°30.114'N 03°21.688'W
SUBSTATION	53°29.178'N 03°16.509'W

Burbo Bank Turbines

BB12	53°28.483'N 03°11.100'W
BB13	53°28.683'N 03°11.467'W
BB14	53°28.883'N 03°11.850'W
BB15	53°29.084'N 03°12.217'W
BB16	53°29.300'N 03°12.583'W
BB17	53°29.500'N 03°12.967'W
BB18	53°29.700'N 03°13.333'W
BB22	53°28.700'N 03°10.516'W
BB23	53°28.900'N 03°10.900'W
BB24	53°29.100'N 03°11.267'W
BB25	53°29.300'N 03°11.650'W
BB26	53°29.500'N 03°12.016'W
BB27	53°29.717'N 03°12.383'W
BB28	53°29.917'N 03°12.767'W
BB29	53°30.117'N 03°13.133'W
BB31	53°28.700'N 03°09.584'W
BB32	53°28.900'N 03°09.950'W
BB33	53°29.116'N 03°10.316'W
BB34	53°29.316'N 03°10.700'W
BB35	53°29.517'N 03°11.067'W
BB36	53°29.716'N 03°11.433'W
BB37	53°29.917'N 03°11.816'W
BB38	53°30.117'N 03°12.184'W
BB41	53°28.917'N 03°09.000'W
BB42	53°29.116'N 03°09.367'W

Burbo Bank Extension Turbines

A01	53°30.089'N 03°22.363'W
A02	53°29.785'N 03°21.806'W
B01	53°30.094'N 03°21.187'W
B02	53°29.412'N 03°21.128'W
C01	53°30.097'N 03°20.271'W
C02	53°29.578'N 03°20.217'W
C03	53°29.032'N 03°20.435'W
C04	53°28.649'N 03°19.738'W
D01	53°30.100'N 03°19.185'W
D04	53°28.278'N 03°19.063'W
E01	53°30.103'N 03°18.318'W
E03	53°29.122'N 03°18.349'W
E05	53°27.871'N 03°18.323'W
F01	53°30.106'N 03°17.202'W
F02	53°29.606'N 03°17.408'W
F04	53°28.455'N 03°17.209'W
F05	53°27.875'N 03°16.939'W
G01	53°30.109'N 03°16.169'W
G02	53°29.500'N 03°15.961'W
G03	53°28.983'N 03°16.194'W
G05	53°27.879'N 03°15.945'W
H01	53°30.111'N 03°15.146'W
H04	53°28.486'N 03°14.983'W
H05	53°27.880'N 03°14.967'W
J02	53°29.576'N 03°14.213'W

Burbo Bank Extension Turbines

J03	53°28.989'N 03°13.896'W
J05	53°27.883'N 03°13.983'W
J01	53°30.114'N 03°14.071'W
K04	53°28.368'N 03°12.791'W
K05	53°27.887'N 03°12.990'W
L05	53°27.889'N 03°12.047'W
M05	53°28.088'N 03°11.274'W



Contact us

-  +44 (0)131 380 4545
-  kingfisher@seafish.co.uk
-  @kingfisherinfo
-  @KingfisherInformation
-  www.kis-orca.org

