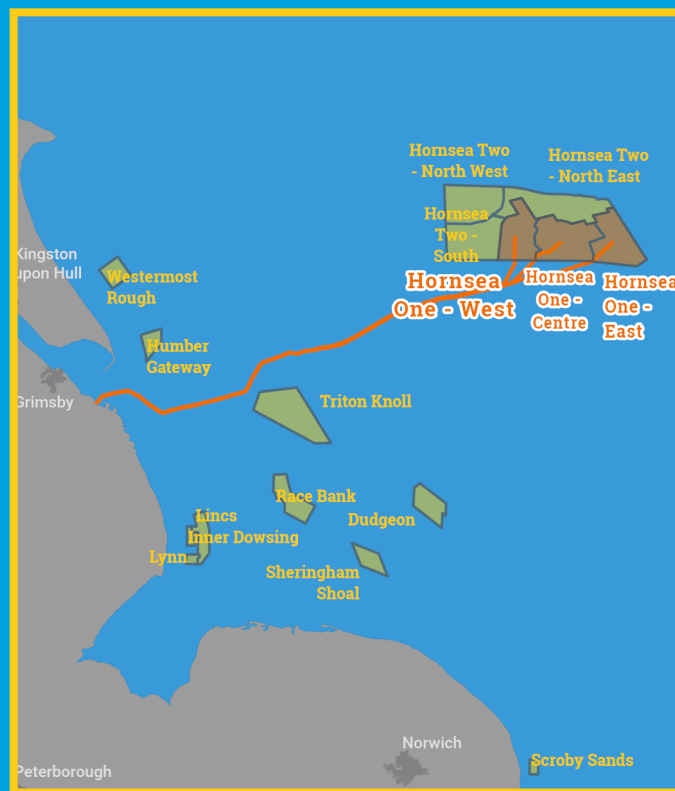




Kingfisher Wind farm Chart



Hornsea Project 1
Offshore wind farm
January 2026



Emergency contact number
+44(0)207 811 1170

Description

The Hornsea Project 1 Offshore Wind Farm is operated by Orsted. It is situated approximately 122 km from shore in the Southern North Sea (Humber). The wind farm is fully operational and has 174 turbines, a total capacity of 1.2 GW and covers an area of approximately 408 km².

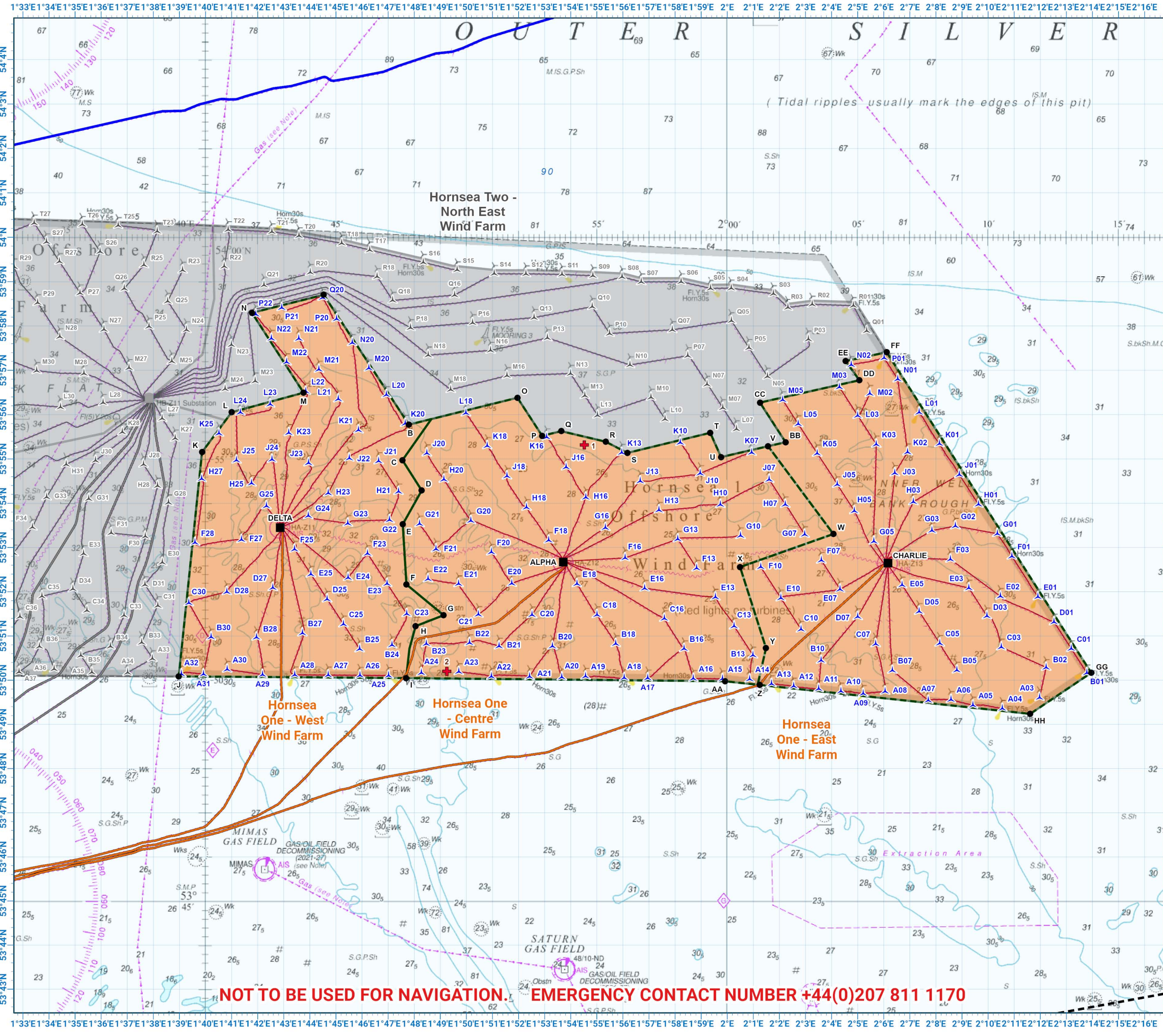
Emergency procedures

1. If you suspect you have snagged a subsea cable or renewable energy structure, DO NOT endanger your vessel and crew by attempting to recover your gear.
2. Carefully plot your vessel's position as accurately as possible.
3. Advise the Coastguard of your situation, and call the 24 hour Emergency Number and state that an incident is occurring concerning a subsea cable or renewable energy structure.

Reducing the risks whilst fishing

To reduce the risks of fishing near offshore structures, it is essential to be up to date with KIS-ORCA information. KIS-ORCA information is easy to install on your vessel's fishing plotter and ensures skippers are able to make informed decisions for their safety.

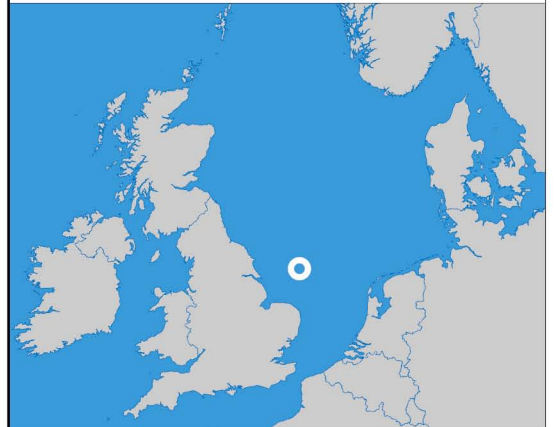
The closer to the surface a subsea cable is lifted when fouled by fishing gear, the more danger there is to the fishing vessel. In the interests of fishing safety and to prevent damage to subsea structures, fishermen are advised to exercise caution when fishing in the vicinity of subsea cables and renewable energy structures. Loss of gear, fishing time and catch can result if a trawler snags a subsea structure and there is serious risk of loss of life.



**Hornsea Project 1
Offshore Wind Farm**

- Site boundary
- Wind turbine
- Buoy
- Substation
- Export cable
- Inter array cable
- Power cable
- Out of Use cable

Grey coloured features displayed on this chart represent additional offshore wind farm structures. Visit www.kis-orca.org/map for more info.

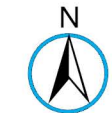
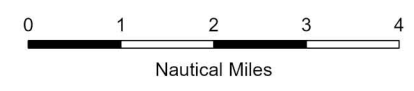


Projection: World_Mercator
Spheroid: GCS_WGS_1984
Datum: D_WGS_1984

This data is issued as a guide only. Seafish, cable / structure owners and Distributors accept no responsibility for any inaccuracies however caused.

Please be aware that other structures & cables may exist in addition to those shown on this chart.

© British Crown Copyright, 2025/26.
All rights reserved.
Not to be used for Navigation.



Scale @ A3:
1:150,000

NOT TO BE USED FOR NAVIGATION. EMERGENCY CONTACT NUMBER +44(0)207 811 1170

Asset locations

Hornsea One West Extents		Hornsea One West Extents		Hornsea One West Infrastructure	
A	53°58.703'N 01°44.531'E	H	53°51.222'N 01°48.054'E	DELTA	53°53.450'N 01°42.864'E
B	53°55.774'N 01°47.797'E	I	53°50.047'N 01°47.691'E		
C	53°54.972'N 01°47.549'E	J	53°50.085'N 01°38.974'E		
D	53°54.288'N 01°48.288'E	K	53°55.155'N 01°39.867'E		
E	53°53.525'N 01°47.561'E	L	53°56.054'N 01°41.002'E		
F	53°52.165'N 01°47.702'E	M	53°56.495'N 01°43.760'E		
G	53°51.469'N 01°49.127'E	N	53°58.297'N 01°41.780'E		

Hornsea One West Turbines		Hornsea One West Turbines	
A25	53°50.105'N 01°47.021'E	H21	53°54.262'N 01°47.398'E
A26	53°50.110'N 01°45.922'E	H23	53°54.227'N 01°44.703'E
A27	53°50.115'N 01°44.704'E	H25	53°54.453'N 01°41.762'E
A28	53°50.121'N 01°43.419'E	H27	53°54.551'N 01°39.853'E
A29	53°50.126'N 01°42.188'E	J21	53°54.953'N 01°46.638'E
A30	53°50.244'N 01°40.830'E	J22	53°55.017'N 01°45.513'E
A31	53°50.136'N 01°39.924'E	J23	53°54.908'N 01°43.949'E
A32	53°50.139'N 01°39.077'E	J24	53°54.989'N 01°42.547'E
B24	53°50.795'N 01°47.152'E	J25	53°54.970'N 01°41.189'E
B25	53°50.705'N 01°45.910'E	K20	53°55.800'N 01°47.657'E
B27	53°51.064'N 01°43.715'E	K21	53°55.651'N 01°45.865'E
B28	53°50.970'N 01°41.956'E	K23	53°55.589'N 01°43.194'E
B30	53°50.975'N 01°40.214'E	K25	53°55.578'N 01°40.515'E
C23	53°51.503'N 01°47.714'E	L20	53°56.448'N 01°46.934'E
C25	53°51.269'N 01°45.286'E	L21	53°56.351'N 01°45.090'E
C30	53°51.746'N 01°39.359'E	L22	53°56.524'N 01°43.845'E
D25	53°51.833'N 01°44.663'E	L23	53°56.234'N 01°42.479'E
D27	53°52.092'N 01°42.579'E	L24	53°56.051'N 01°41.336'E
D28	53°51.998'N 01°40.817'E	M20	53°57.049'N 01°46.265'E
E23	53°52.184'N 01°46.962'E	M21	53°57.020'N 01°44.349'E
E24	53°52.320'N 01°45.468'E	M22	53°57.187'N 01°43.108'E
E25	53°52.397'N 01°44.039'E	N20	53°57.622'N 01°45.625'E
F23	53°52.865'N 01°46.209'E	N21	53°57.716'N 01°43.578'E
F25	53°52.961'N 01°43.415'E	N22	53°57.718'N 01°42.526'E
F27	53°53.175'N 01°41.379'E	P20	53°58.159'N 01°45.027'E
F28	53°53.112'N 01°39.599'E	P21	53°58.410'N 01°42.921'E
G22	53°53.622'N 01°47.056'E	P22	53°58.263'N 01°41.926'E
G23	53°53.546'N 01°45.456'E	Q20	53°58.641'N 01°44.491'E
G24	53°53.717'N 01°43.942'E		
G25	53°53.937'N 01°42.335'E		



Contact us

- ☎ +44(0)131 380 4545
- ✉ kingfisher@seafish.co.uk
- 🐦 @kingfisherinfo
- 📘 @KingfisherInformation
- 🌐 www.kis-orca.org



Asset locations

Hornsea One Centre Extents

O	53°56.381'N 01°51.957'E
P	53°55.522'N 01°52.905'E
Q	53°55.627'N 01°53.635'E
R	53°55.389'N 01°55.338'E
S	53°55.136'N 01°56.177'E
T	53°55.590'N 01°59.349'E
U	53°55.042'N 01°59.763'E

Hornsea One Centre Extents

V	53°55.287'N 02°01.567'E
W	53°53.305'N 02°04.069'E
X	53°52.558'N 02°00.492'E
Y	53°50.727'N 02°01.486'E
Z	53°49.893'N 02°01.252'E
AA	53°49.976'N 01°59.913'E

Hornsea One Centre Infrastructure

BUOY 1	53°55.316'N 01°54.519'E
BUOY 2	53°50.200'N 01°49.249'E
ALPHA	53°52.670'N 01°53.715'E
BRAVO	53°37.655'N 00°56.163'E

Hornsea One Centre Turbines

A14	53°50.023'N 02°00.861'E
A15	53°50.031'N 01°59.818'E
A16	53°50.038'N 01°58.701'E
A17	53°50.049'N 01°56.954'E
A18	53°50.055'N 01°56.051'E
A19	53°50.089'N 01°54.569'E
A20	53°50.069'N 01°53.658'E
A21	53°50.080'N 01°52.425'E
A22	53°50.084'N 01°50.959'E
A23	53°50.191'N 01°49.709'E
A24	53°50.167'N 01°48.274'E
B13	53°50.566'N 02°00.984'E
B16	53°50.712'N 01°58.345'E
B18	53°50.824'N 01°55.727'E
B20	53°50.767'N 01°53.301'E
B21	53°50.771'N 01°51.253'E
B22	53°50.846'N 01°50.120'E
B23	53°50.822'N 01°48.466'E
C13	53°51.222'N 02°00.265'E
C16	53°51.395'N 01°57.588'E
C18	53°51.480'N 01°55.006'E
C20	53°51.477'N 01°52.520'E
C21	53°51.489'N 01°50.463'E
E13	53°51.878'N 01°59.546'E
E16	53°52.079'N 01°56.836'E
E18	53°52.178'N 01°54.239'E
E20	53°52.186'N 01°51.739'E
E21	53°52.180'N 01°49.700'E
E22	53°52.288'N 01°48.530'E
F13	53°52.534'N 01°58.826'E

Hornsea One Centre Turbines

F16	53°52.764'N 01°56.084'E
F18	53°53.162'N 01°53.155'E
F20	53°52.895'N 01°50.957'E
F21	53°52.964'N 01°48.835'E
G07	53°53.295'N 02°02.967'E
G10	53°53.266'N 02°00.511'E
G13	53°53.190'N 01°58.105'E
G16	53°53.448'N 01°55.331'E
G20	53°53.605'N 01°50.175'E
G21	53°53.535'N 01°48.205'E
H07	53°53.971'N 02°02.226'E
H10	53°53.970'N 01°59.738'E
H13	53°53.845'N 01°57.385'E
H16	53°54.132'N 01°54.578'E
H18	53°53.906'N 01°52.306'E
H20	53°54.537'N 01°49.137'E
J07	53°54.535'N 02°01.608'E
J10	53°54.674'N 01°58.964'E
J13	53°54.501'N 01°56.664'E
J16	53°54.816'N 01°53.825'E
J18	53°54.612'N 01°51.557'E
J20	53°55.131'N 01°48.486'E
K07	53°55.146'N 02°00.936'E
K10	53°55.368'N 01°58.202'E
K13	53°55.141'N 01°55.959'E
K16	53°55.492'N 01°53.080'E
K18	53°55.296'N 01°50.802'E
L18	53°56.038'N 01°49.983'E



Contact us

-  +44(0)131 380 4545
-  kingfisher@seafish.co.uk
-  @kingfisherinfo
-  @KingfisherInformation
-  www.kis-orca.org



Asset locations

Hornsea One East Extents

BB	53°55.378'N 02°02.237'E
CC	53°56.272'N 02°01.254'E
DD	53°56.776'N 02°05.067'E
EE	53°57.208'N 02°04.540'E
FF	53°57.408'N 02°06.112'E
GG	53°50.167'N 02°13.953'E

Hornsea One East Extents

HH	53°49.238'N 02°11.614'E
----	-------------------------

Hornsea One East Infrastructure

CHARLIE	53°52.647'N 02°06.163'E
---------	-------------------------

Hornsea One East Turbines

A03	53°49.606'N 02°11.973'E
A04	53°49.361'N 02°10.548'E
A05	53°49.433'N 02°09.418'E
A06	53°49.561'N 02°08.578'E
A07	53°49.541'N 02°07.708'E
A08	53°49.746'N 02°06.054'E
A09	53°49.699'N 02°05.214'E
A10	53°49.752'N 02°04.360'E
A11	53°49.806'N 02°03.505'E
A12	53°49.866'N 02°02.547'E
A13	53°49.919'N 02°01.698'E
B01	53°50.165'N 02°13.784'E
B02	53°50.288'N 02°12.227'E
B05	53°50.226'N 02°08.807'E
B07	53°50.221'N 02°06.332'E
B10	53°50.447'N 02°03.599'E
C01	53°50.712'N 02°13.188'E
C03	53°50.749'N 02°10.505'E
C05	53°50.834'N 02°08.145'E
C07	53°50.821'N 02°05.693'E
C10	53°51.152'N 02°02.828'E
D01	53°51.317'N 02°12.529'E
D03	53°51.452'N 02°09.954'E
D05	53°51.553'N 02°07.359'E
D07	53°51.435'N 02°05.004'E
E01	53°51.884'N 02°11.912'E
E02	53°51.897'N 02°10.473'E
E03	53°52.083'N 02°09.265'E
E05	53°52.154'N 02°06.702'E
E07	53°52.055'N 02°04.325'E

Hornsea One East Turbines

E10	53°51.857'N 02°02.056'E
F01	53°52.801'N 02°10.911'E
F03	53°52.733'N 02°08.555'E
F07	53°52.710'N 02°03.608'E
F10	53°52.561'N 02°01.284'E
G01	53°53.312'N 02°10.354'E
G02	53°53.485'N 02°08.748'E
G03	53°53.382'N 02°07.845'E
G05	53°53.140'N 02°05.624'E
H01	53°53.974'N 02°09.631'E
H03	53°54.031'N 02°07.135'E
H05	53°53.827'N 02°04.872'E
J01	53°54.646'N 02°08.896'E
J03	53°54.681'N 02°06.425'E
J05	53°54.425'N 02°04.217'E
K01	53°55.342'N 02°08.135'E
K02	53°55.153'N 02°06.915'E
K03	53°55.330'N 02°05.714'E
K05	53°55.126'N 02°03.448'E
L01	53°56.052'N 02°07.357'E
L03	53°55.979'N 02°05.003'E
L05	53°55.790'N 02°02.720'E
M02	53°56.474'N 02°05.468'E
M03	53°56.620'N 02°04.300'E
M05	53°56.332'N 02°02.125'E
N01	53°56.802'N 02°06.536'E
N02	53°57.125'N 02°04.754'E
P01	53°57.279'N 02°06.013'E



Contact us

- +44(0)131 380 4545
- kingfisher@seafish.co.uk
- @kingfisherinfo
- @KingfisherInformation
- www.kis-orca.org

