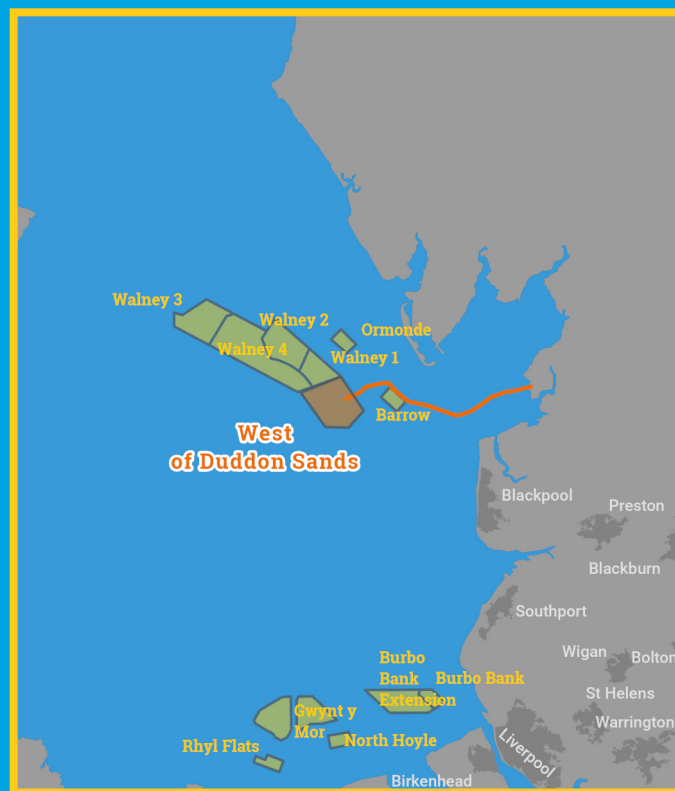
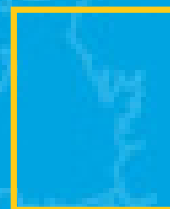




Kingfisher Wind farm Chart



**West of
Duddon Sands
Offshore wind farm**
January 2026



Emergency contact number
+44(0)7879 431220

Description

The West of Duddon Sands Offshore Wind Farm is operated by Orsted. It is situated approximately 15 km from shore in the Irish Sea, off the North Lancashire coast. The wind farm is fully operational and has 108 turbines, a total capacity of 389 MW and covers an area of approximately 67 km².

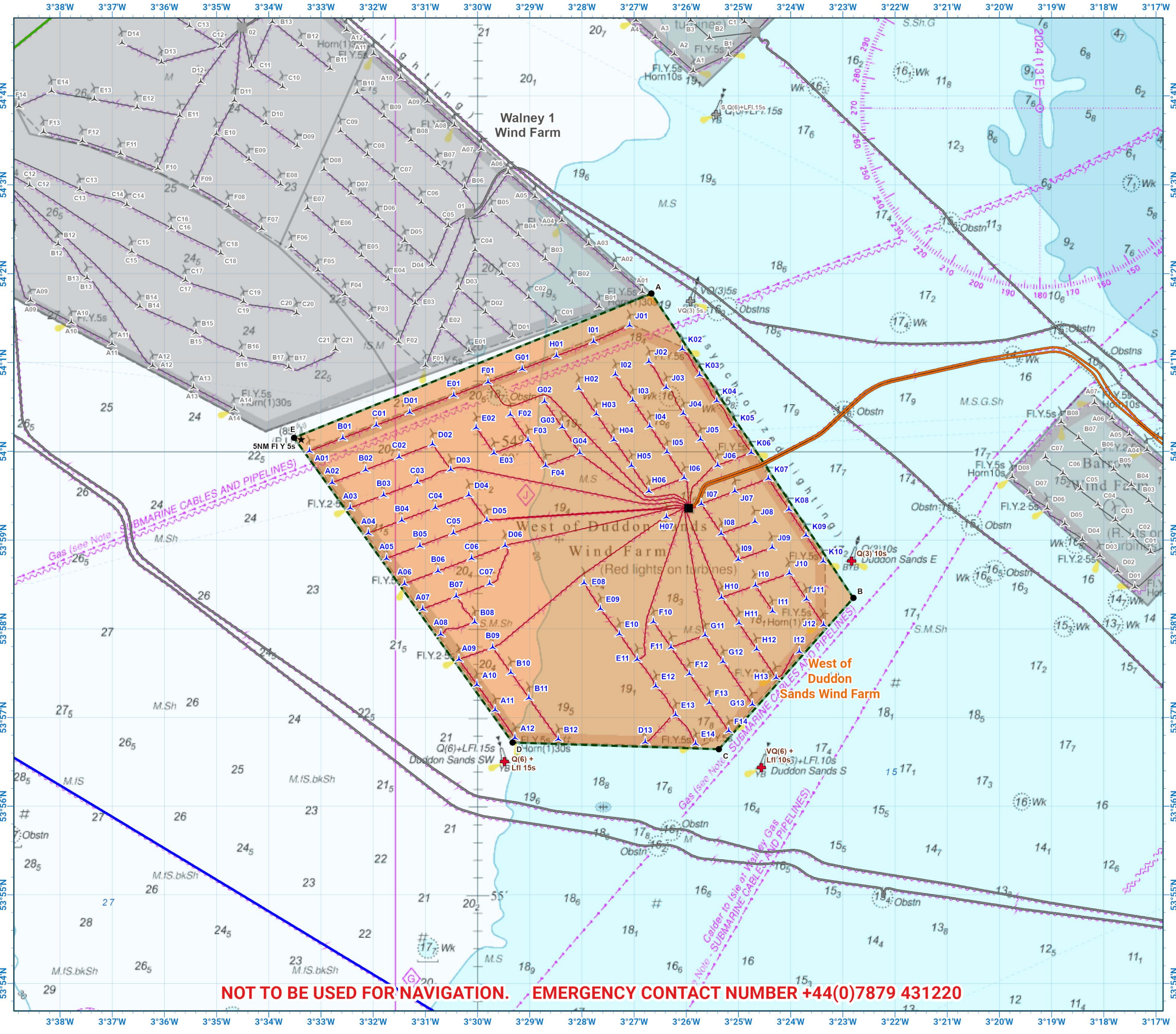
Emergency procedures

1. If you suspect you have snagged a subsea cable or renewable energy structure, DO NOT endanger your vessel and crew by attempting to recover your gear.
2. Carefully plot your vessel's position as accurately as possible.
3. Advise the Coastguard of your situation, and call the 24 hour Emergency Number and state that an incident is occurring concerning a subsea cable or renewable energy structure.

Reducing the risks whilst fishing

To reduce the risks of fishing near offshore structures, it is essential to be up to date with KIS-ORCA information. KIS-ORCA information is easy to install on your vessel's fishing plotter and ensures skippers are able to make informed decisions for their safety.

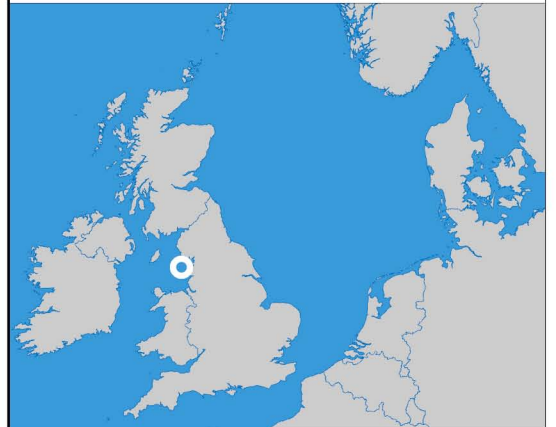
The closer to the surface a subsea cable is lifted when fouled by fishing gear, the more danger there is to the fishing vessel. In the interests of fishing safety and to prevent damage to subsea structures, fishermen are advised to exercise caution when fishing in the vicinity of subsea cables and renewable energy structures. Loss of gear, fishing time and catch can result if a trawler snags a subsea structure and there is serious risk of loss of life.



**West of Duddon Sands
Offshore Wind Farm**

- Site boundary
- Wind turbine
- Buoy
- Met Mast
- Substation
- Export cable
- Inter array cable
- Telecomms cable
- Power cable

Grey coloured features displayed on this chart represent additional offshore wind farm structures. Visit www.kis-orca.org/map for more info.

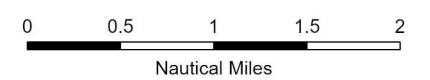


Projection: World_Mercator
Spheroid: GCS_WGS_1984
Datum: D_WGS_1984

This data is issued as a guide only. Seafish, cable / structure owners and Distributors accept no responsibility for any inaccuracies however caused.

Please be aware that other structures & cables may exist in addition to those shown on this chart.

© British Crown Copyright, 2025/26.
All rights reserved.
Not to be used for Navigation.



Scale @ A3:
1:75,000

NOT TO BE USED FOR NAVIGATION. EMERGENCY CONTACT NUMBER +44(0)7879 431220

Asset locations

Extents		Infrastructure	
A	54°01.776'N 03°26.667'W	Q(3) 10s	53°58.764'N 03°22.832'W
B	53°58.347'N 03°22.799'W	VQ(6) +Lfl 10s	53°56.436'N 03°24.562'W
C	53°56.643'N 03°25.375'W	Q(6) + Lfl 15s	53°56.503'N 03°29.484'W
D	53°56.718'N 03°29.331'W	5NM FI Y 5s MET MAST	54°00.135'N 03°33.381'W
E	54°00.153'N 03°33.516'W	SUBSTATION	53°59.359'N 03°25.957'W

Turbines		Turbines		Turbines	
A01	54°00.004'N 03°33.221'W	C07	53°58.509'N 03°29.767'W	G04	53°59.984'N 03°28.041'W
A02	53°59.647'N 03°32.785'W	D01	54°00.439'N 03°31.299'W	G11	53°57.928'N 03°25.641'W
A03	53°59.362'N 03°32.438'W	D02	54°00.080'N 03°30.861'W	G12	53°57.631'N 03°25.296'W
A04	53°59.078'N 03°32.091'W	D03	53°59.794'N 03°30.514'W	G13	53°57.149'N 03°24.734'W
A05	53°58.793'N 03°31.744'W	D04	53°59.508'N 03°30.167'W	H01	54°01.075'N 03°28.486'W
A06	53°58.508'N 03°31.397'W	D05	53°59.223'N 03°29.819'W	H02	54°00.708'N 03°28.060'W
A07	53°58.223'N 03°31.051'W	D06	53°58.937'N 03°29.472'W	H03	54°00.419'N 03°27.724'W
A08	53°57.939'N 03°30.704'W	D13	53°56.724'N 03°26.785'W	H04	54°00.130'N 03°27.388'W
A09	53°57.654'N 03°30.357'W	E01	54°00.630'N 03°30.455'W	H05	53°59.840'N 03°27.051'W
A10	53°57.369'N 03°30.011'W	E02	54°00.267'N 03°30.026'W	H06	53°59.551'N 03°26.715'W
A11	53°57.085'N 03°29.664'W	E03	53°59.980'N 03°29.686'W	H07	53°59.261'N 03°26.380'W
A12	53°56.771'N 03°29.283'W	E08	53°58.518'N 03°27.960'W	H10	53°58.353'N 03°25.326'W
B01	54°00.149'N 03°32.580'W	E09	53°58.226'N 03°27.645'W	H11	53°58.064'N 03°24.991'W
B02	53°59.791'N 03°32.144'W	E10	53°57.943'N 03°27.281'W	H12	53°57.770'N 03°24.651'W
B03	53°59.506'N 03°31.797'W	E11	53°57.655'N 03°26.941'W	H13	53°57.449'N 03°24.279'W
B04	53°59.221'N 03°31.450'W	E12	53°57.354'N 03°26.585'W	I01	54°01.235'N 03°27.775'W
B05	53°58.936'N 03°31.103'W	E13	53°57.031'N 03°26.205'W	I02	54°00.866'N 03°27.358'W
B06	53°58.651'N 03°30.756'W	E14	53°56.706'N 03°25.821'W	I03	54°00.574'N 03°27.028'W
B07	53°58.366'N 03°30.409'W	F01	54°00.778'N 03°29.799'W	I04	54°00.283'N 03°26.699'W
B08	53°58.076'N 03°30.055'W	F02	54°00.414'N 03°29.371'W	I05	53°59.992'N 03°26.370'W
B09	53°57.791'N 03°29.709'W	F03	54°00.126'N 03°29.032'W	I06	53°59.701'N 03°26.041'W
B10	53°57.506'N 03°29.363'W	F04	53°59.838'N 03°28.694'W	I07	53°59.409'N 03°25.712'W
B11	53°57.221'N 03°29.015'W	F10	53°58.080'N 03°26.630'W	I08	53°59.073'N 03°25.332'W
B12	53°56.756'N 03°28.452'W	F11	53°57.791'N 03°26.292'W	I09	53°58.781'N 03°25.003'W
C01	54°00.294'N 03°31.940'W	F12	53°57.492'N 03°25.941'W	I10	53°58.490'N 03°24.674'W
C02	53°59.936'N 03°31.503'W	F13	53°57.167'N 03°25.560'W	I11	53°58.198'N 03°24.345'W
C03	53°59.650'N 03°31.155'W	F14	53°56.849'N 03°25.187'W	I12	53°57.744'N 03°23.833'W
C04	53°59.365'N 03°30.808'W	G01	54°00.926'N 03°29.142'W	J01	54°01.418'N 03°27.086'W
C05	53°59.080'N 03°30.461'W	G02	54°00.561'N 03°28.716'W	J02	54°01.010'N 03°26.716'W
C06	53°58.794'N 03°30.114'W	G03	54°00.273'N 03°28.378'W	J03	54°00.718'N 03°26.386'W



Contact us

- ☎ +44(0)131 380 4545
- ✉ kingfisher@seafish.co.uk
- 🐦 @kingfisherinfo
- 📘 @KingfisherInformation
- 🌐 www.kis-orca.org



Asset locations

Turbines

J04	54°00.426'N 03°26.057'W
J05	54°00.135'N 03°25.728'W
J06	53°59.843'N 03°25.398'W
J07	53°59.552'N 03°25.069'W
J08	53°59.209'N 03°24.683'W
J09	53°58.917'N 03°24.354'W
J10	53°58.626'N 03°24.025'W
J11	53°58.334'N 03°23.696'W
J12	53°58.045'N 03°23.371'W
K02	54°01.153'N 03°26.074'W
K03	54°00.861'N 03°25.744'W
K04	54°00.569'N 03°25.415'W
K05	54°00.278'N 03°25.085'W
K06	53°59.986'N 03°24.756'W
K07	53°59.694'N 03°24.427'W
K08	53°59.346'N 03°24.034'W
K09	53°59.054'N 03°23.705'W
K10	53°58.762'N 03°23.376'W



Contact us

- +44(0)131 380 4545
- kingfisher@seafish.co.uk
- @kingfisherinfo
- @KingfisherInformation
- www.kis-orca.org

