



Kingfisher Wind farm Chart



Thanet
Offshore wind farm
January 2026



Emergency contact number
+44(0)1843 572136

Description

The Thanet Offshore Wind Farm is operated by Vattenfall. It is situated approximately 12 km from shore in the Southern North Sea, off the East Kent coast. The wind farm is fully operational and has 100 turbines, a total capacity of 300 MW and covers an area of approximately 35 km².

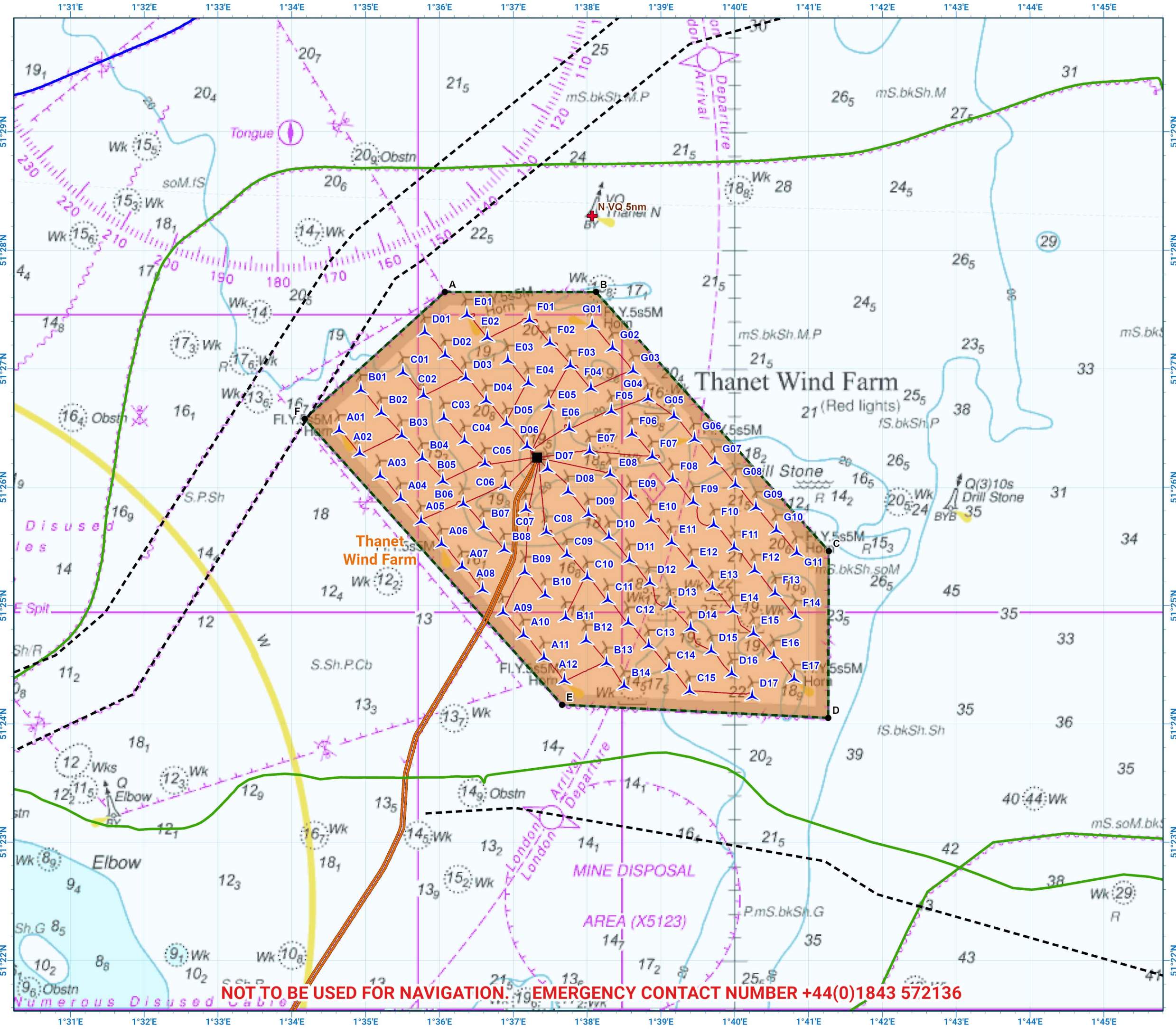
Emergency procedures

1. If you suspect you have snagged a subsea cable or renewable energy structure, DO NOT endanger your vessel and crew by attempting to recover your gear.
2. Carefully plot your vessel's position as accurately as possible.
3. Advise the Coastguard of your situation, and call the 24 hour Emergency Number and state that an incident is occurring concerning a subsea cable or renewable energy structure.

Reducing the risks whilst fishing

To reduce the risks of fishing near offshore structures, it is essential to be up to date with KIS-ORCA information. KIS-ORCA information is easy to install on your vessel's fishing plotter and ensures skippers are able to make informed decisions for their safety.

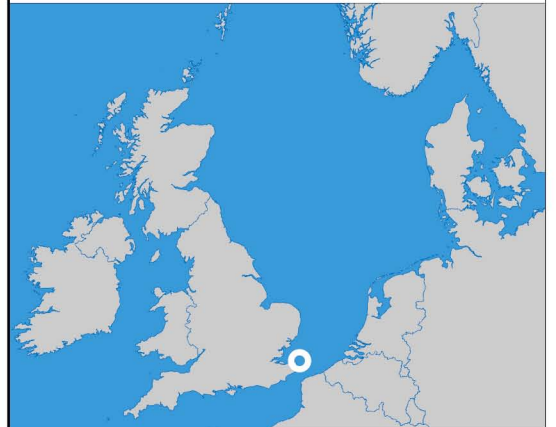
The closer to the surface a subsea cable is lifted when fouled by fishing gear, the more danger there is to the fishing vessel. In the interests of fishing safety and to prevent damage to subsea structures, fishermen are advised to exercise caution when fishing in the vicinity of subsea cables and renewable energy structures. Loss of gear, fishing time and catch can result if a trawler snags a subsea structure and there is serious risk of loss of life.



**Thanet
Offshore Wind Farm**

- Site boundary
- Wind turbine
- Buoy
- Substation
- Export cable
- Inter array cable
- Telecomms cable
- Power cable
- Out of Use cable

Grey coloured features displayed on this chart represent additional offshore wind farm structures. Visit www.kis-orca.org/map for more info.

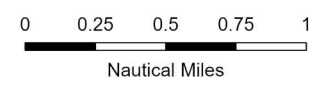


Projection: World_Mercator
Spheroid: GCS_WGS_1984
Datum: D_WGS_1984

This data is issued as a guide only. Seafish, cable / structure owners and Distributors accept no responsibility for any inaccuracies however caused.

Please be aware that other structures & cables may exist in addition to those shown on this chart.

© British Crown Copyright, 2025/26.
All rights reserved.
Not to be used for Navigation.



Scale @ A3:
1:50,000

NOT TO BE USED FOR NAVIGATION. EMERGENCY CONTACT NUMBER +44(0)1843 572136

Asset locations

Extents		Infrastructure	
A	51°27.648'N 01°36.072'E	N VQ 5nm	51°28.290'N 01°38.070'E
B	51°27.647'N 01°38.121'E	SUBSTATION	51°26.250'N 01°37.325'E
C	51°25.461'N 01°41.274'E		
D	51°24.051'N 01°41.267'E		
E	51°24.162'N 01°37.662'E		
F	51°26.577'N 01°34.174'E		

Turbines		Turbines		Turbines	
A01	51°26.479'N 01°34.642'E	C05	51°26.198'N 01°36.616'E	E03	51°27.070'N 01°36.926'E
A02	51°26.287'N 01°34.919'E	C06	51°26.006'N 01°36.893'E	E04	51°26.878'N 01°37.204'E
A03	51°26.095'N 01°35.197'E	C07	51°25.814'N 01°37.171'E	E05	51°26.686'N 01°37.481'E
A04	51°25.903'N 01°35.474'E	C08	51°25.622'N 01°37.448'E	E06	51°26.494'N 01°37.758'E
A05	51°25.711'N 01°35.752'E	C09	51°25.430'N 01°37.725'E	E07	51°26.302'N 01°38.036'E
A06	51°25.519'N 01°36.029'E	C10	51°25.238'N 01°38.003'E	E08	51°26.110'N 01°38.313'E
A07	51°25.327'N 01°36.307'E	C11	51°25.046'N 01°38.280'E	E09	51°25.918'N 01°38.590'E
A08	51°25.134'N 01°36.584'E	C12	51°24.854'N 01°38.557'E	E10	51°25.725'N 01°38.867'E
A09	51°24.942'N 01°36.861'E	C13	51°24.661'N 01°38.834'E	E11	51°25.533'N 01°39.145'E
A10	51°24.750'N 01°37.138'E	C14	51°24.469'N 01°39.111'E	E12	51°25.341'N 01°39.422'E
A11	51°24.558'N 01°37.416'E	C15	51°24.277'N 01°39.388'E	E13	51°25.149'N 01°39.699'E
A12	51°24.366'N 01°37.693'E	D01	51°27.307'N 01°35.800'E	E14	51°24.956'N 01°39.976'E
B01	51°26.819'N 01°34.935'E	D02	51°27.115'N 01°36.077'E	E15	51°24.764'N 01°40.253'E
B02	51°26.627'N 01°35.213'E	D03	51°26.922'N 01°36.355'E	E16	51°24.572'N 01°40.529'E
B03	51°26.435'N 01°35.490'E	D04	51°26.730'N 01°36.632'E	E17	51°24.380'N 01°40.806'E
B04	51°26.243'N 01°35.768'E	D05	51°26.538'N 01°36.910'E	F01	51°27.410'N 01°37.220'E
B05	51°26.051'N 01°36.045'E	D06	51°26.346'N 01°37.187'E	F02	51°27.218'N 01°37.497'E
B06	51°25.858'N 01°36.323'E	D07	51°26.154'N 01°37.465'E	F03	51°27.026'N 01°37.774'E
B07	51°25.667'N 01°36.600'E	D08	51°25.962'N 01°37.742'E	F04	51°26.834'N 01°38.052'E
B08	51°25.474'N 01°36.878'E	D09	51°25.770'N 01°38.019'E	F05	51°26.641'N 01°38.329'E
B09	51°25.282'N 01°37.155'E	D10	51°25.578'N 01°38.296'E	F06	51°26.449'N 01°38.606'E
B10	51°25.090'N 01°37.432'E	D11	51°25.385'N 01°38.573'E	F07	51°26.257'N 01°38.884'E
B11	51°24.898'N 01°37.709'E	D12	51°25.193'N 01°38.851'E	F08	51°26.065'N 01°39.161'E
B12	51°24.706'N 01°37.986'E	D13	51°25.001'N 01°39.128'E	F09	51°25.873'N 01°39.438'E
B13	51°24.514'N 01°38.263'E	D14	51°24.809'N 01°39.404'E	F10	51°25.681'N 01°39.715'E
B14	51°24.321'N 01°38.502'E	D15	51°24.617'N 01°39.682'E	F11	51°25.488'N 01°39.992'E
C01	51°26.967'N 01°35.506'E	D16	51°24.425'N 01°39.959'E	F12	51°25.296'N 01°40.269'E
C02	51°26.775'N 01°35.784'E	D17	51°24.232'N 01°40.236'E	F13	51°25.104'N 01°40.546'E
C03	51°26.583'N 01°36.061'E	E01	51°27.454'N 01°36.371'E	F14	51°24.912'N 01°40.823'E
C04	51°26.390'N 01°36.339'E	E02	51°27.262'N 01°36.649'E	G01	51°27.366'N 01°38.068'E



Contact us

- ☎ +44(0)131 380 4545
- ✉ kingfisher@seafish.co.uk
- 🐦 @kingfisherinfo
- 📘 @KingfisherInformation
- 🌐 www.kis-orca.org



Asset locations

Turbines

G02	51°27.174'N 01°38.345'E
G03	51°26.981'N 01°38.623'E
G04	51°26.747'N 01°38.826'E
G05	51°26.597'N 01°39.177'E
G06	51°26.405'N 01°39.455'E
G07	51°26.213'N 01°39.732'E
G08	51°26.020'N 01°40.009'E
G09	51°25.828'N 01°40.286'E
G10	51°25.636'N 01°40.563'E
G11	51°25.444'N 01°40.840'E



Contact us

- +44(0)131 380 4545
- kingfisher@seafish.co.uk
- @kingfisherinfo
- @KingfisherInformation
- www.kis-orca.org

