



Kingfisher Wind farm Chart



Scroby Sands
Offshore wind farm
January 2026



Emergency contact number
+44(0)7841 057544

Description

The Scroby Sands Offshore Wind Farm is operated by RWE Renewables. It is situated approximately 2.3 km from shore in the Southern North Sea, off the East Norfolk coast. The wind farm is fully operational and has 30 turbines, a total capacity of 60 MW and covers an area of approximately 4 km².

Emergency procedures

1. If you suspect you have snagged a subsea cable or renewable energy structure, DO NOT endanger your vessel and crew by attempting to recover your gear.
2. Carefully plot your vessel's position as accurately as possible.
3. Advise the Coastguard of your situation, and call the 24 hour Emergency Number and state that an incident is occurring concerning a subsea cable or renewable energy structure.

Reducing the risks whilst fishing

To reduce the risks of fishing near offshore structures, it is essential to be up to date with KIS-ORCA information. KIS-ORCA information is easy to install on your vessel's fishing plotter and ensures skippers are able to make informed decisions for their safety.

The closer to the surface a subsea cable is lifted when fouled by fishing gear, the more danger there is to the fishing vessel. In the interests of fishing safety and to prevent damage to subsea structures, fishermen are advised to exercise caution when fishing in the vicinity of subsea cables and renewable energy structures. Loss of gear, fishing time and catch can result if a trawler snags a subsea structure and there is serious risk of loss of life.



**Scroby Sands
Offshore Wind Farm**

- Site boundary
- Wind turbine
- Buoy
- Met Mast
- Export cable
- Inter array cable

Grey coloured features displayed on this chart represent additional offshore wind farm structures. Visit www.kis-orca.org/map for more info.

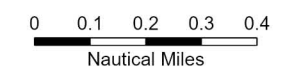


Projection: World_Mercator
Spheroid: GCS_WGS_1984
Datum: D_WGS_1984

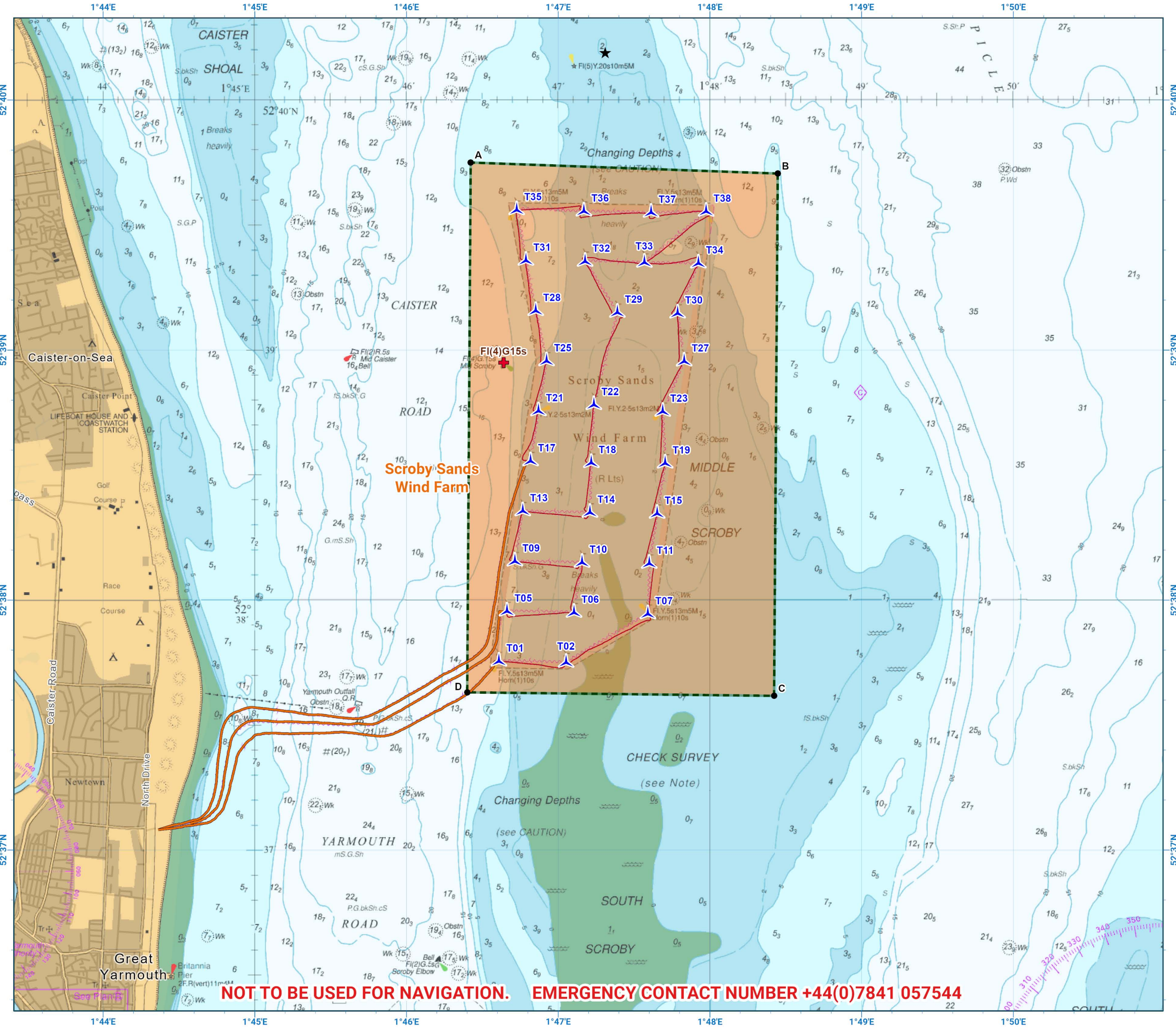
This data is issued as a guide only. Seafish, cable / structure owners and Distributors accept no responsibility for any inaccuracies however caused.

Please be aware that other structures & cables may exist in addition to those shown on this chart.

© British Crown Copyright, 2025/26.
All rights reserved.
Not to be used for Navigation.



Scale @ A3:
1:25,000



Asset locations

Extents

A	52°39.750'N 01°46.423'E
B	52°39.706'N 01°48.447'E
C	52°37.617'N 01°48.423'E
D	52°37.631'N 01°46.400'E

Turbines

T01	52°37.755'N 01°46.609'E
T02	52°37.750'N 01°47.052'E
T05	52°37.955'N 01°46.662'E
T06	52°37.950'N 01°47.104'E
T07	52°37.944'N 01°47.591'E
T09	52°38.155'N 01°46.714'E
T10	52°38.150'N 01°47.157'E
T11	52°38.146'N 01°47.600'E
T13	52°38.356'N 01°46.766'E
T14	52°38.350'N 01°47.209'E
T15	52°38.346'N 01°47.652'E
T17	52°38.556'N 01°46.818'E
T18	52°38.549'N 01°47.218'E
T19	52°38.547'N 01°47.705'E
T21	52°38.756'N 01°46.870'E
T22	52°38.781'N 01°47.235'E
T23	52°38.754'N 01°47.689'E
T25	52°38.956'N 01°46.923'E
T27	52°38.955'N 01°47.830'E
T28	52°39.157'N 01°46.852'E
T29	52°39.150'N 01°47.390'E
T30	52°39.147'N 01°47.787'E
T31	52°39.358'N 01°46.787'E
T32	52°39.354'N 01°47.177'E
T33	52°39.350'N 01°47.568'E
T34	52°39.347'N 01°47.924'E
T35	52°39.560'N 01°46.726'E
T36	52°39.555'N 01°47.169'E
T37	52°39.550'N 01°47.612'E
T38	52°39.554'N 01°47.975'E

Infrastructure

FI(4)G15s	52°38.950'N 01°46.640'E
MET MAST	52°40.190'N 01°47.310'E



Contact us

- +44(0)131 380 4545
- kingfisher@seafish.co.uk
- @kingfisherinfo
- @KingfisherInformation
- www.kis-orca.org

