



# Kingfisher Wind farm Chart



**London Array**  
**Offshore wind farm**  
January 2026



**Emergency contact number**  
**+44(0)1843 855795**

## Description

The London Array Offshore Wind Farm is operated by RWE Renewables. It is situated approximately 20 km from shore in the Southern North Sea, in the Thames Estuary. The wind farm is fully operational and has 175 turbines, a total capacity of 630 MW and covers an area of approximately 107 km<sup>2</sup>.

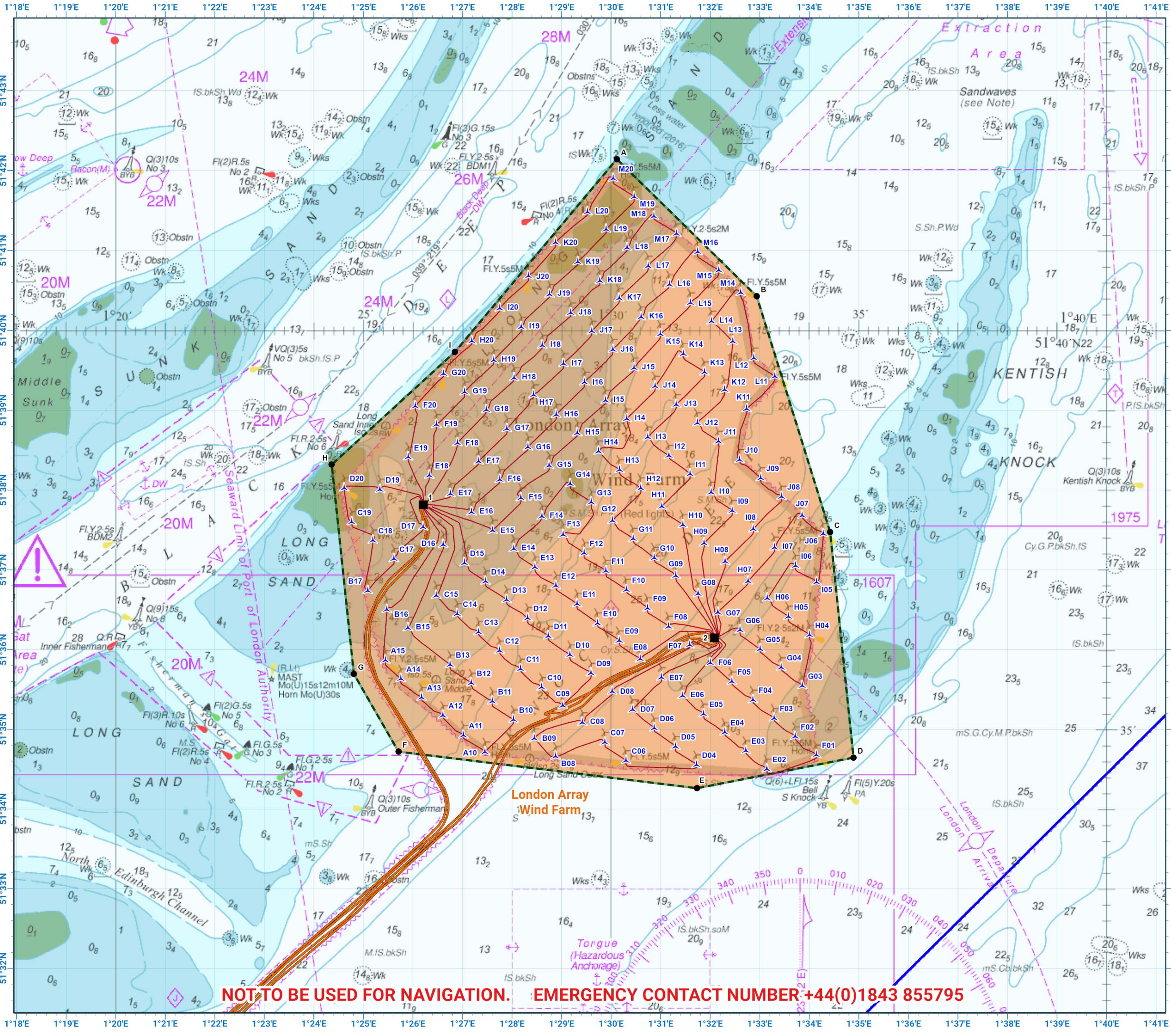
## Emergency procedures

1. If you suspect you have snagged a subsea cable or renewable energy structure, DO NOT endanger your vessel and crew by attempting to recover your gear.
2. Carefully plot your vessel's position as accurately as possible.
3. Advise the Coastguard of your situation, and call the 24 hour Emergency Number and state that an incident is occurring concerning a subsea cable or renewable energy structure.

## Reducing the risks whilst fishing

To reduce the risks of fishing near offshore structures, it is essential to be up to date with KIS-ORCA information. KIS-ORCA information is easy to install on your vessel's fishing plotter and ensures skippers are able to make informed decisions for their safety.

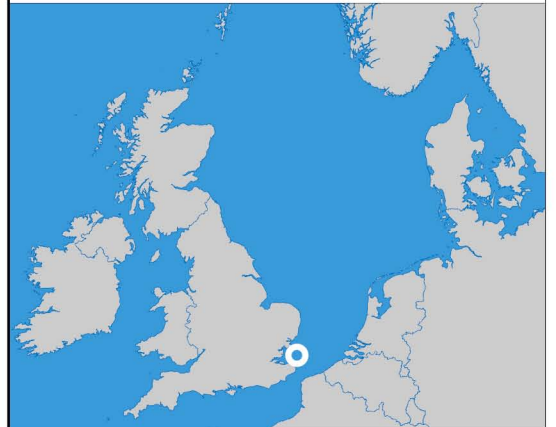
The closer to the surface a subsea cable is lifted when fouled by fishing gear, the more danger there is to the fishing vessel. In the interests of fishing safety and to prevent damage to subsea structures, fishermen are advised to exercise caution when fishing in the vicinity of subsea cables and renewable energy structures. Loss of gear, fishing time and catch can result if a trawler snags a subsea structure and there is serious risk of loss of life.



**London Array  
Offshore Wind Farm**

- Site boundary
- Wind turbine
- Substation
- Export cable
- Inter array cable
- Power cable

Grey coloured features displayed on this chart represent additional offshore wind farm structures. Visit [www.kis-orca.org/map](http://www.kis-orca.org/map) for more info.

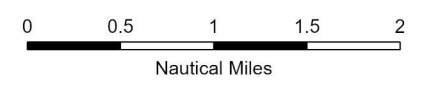


Projection: World\_Mercator  
Spheroid: GCS\_WGS\_1984  
Datum: D\_WGS\_1984

This data is issued as a guide only. Seafish, cable / structure owners and Distributors accept no responsibility for any inaccuracies however caused.

Please be aware that other structures & cables may exist in addition to those shown on this chart.

© British Crown Copyright, 2025/26.  
All rights reserved.  
Not to be used for Navigation.



Scale @ A3:  
1:75,000

**NOT TO BE USED FOR NAVIGATION. EMERGENCY CONTACT NUMBER +44(0)1843 855795**

# Asset locations

Extents		Extents		Infrastructure	
A	51°42.144'N 01°30.116'E	F	51°34.720'N 01°25.708'E	SUBSTATION 1	51°37.815'N 01°26.209'E
B	51°40.428'N 01°32.938'E	G	51°35.695'N 01°24.807'E	SUBSTATION 2	51°36.148'N 01°32.085'E
C	51°37.474'N 01°34.421'E	H	51°38.319'N 01°24.361'E		
D	51°34.645'N 01°34.892'E	I	51°39.732'N 01°26.849'E		
E	51°34.261'N 01°31.735'E				

Turbines		Turbines		Turbines	
A10	51°34.715'N 01°27.455'E	D06	51°35.015'N 01°30.872'E	E18	51°38.183'N 01°26.331'E
A11	51°34.925'N 01°27.018'E	D07	51°35.247'N 01°30.433'E	E19	51°38.413'N 01°25.904'E
A12	51°35.174'N 01°26.607'E	D08	51°35.475'N 01°30.021'E	F01	51°34.679'N 01°34.143'E
A13	51°35.400'N 01°26.175'E	D09	51°35.705'N 01°29.595'E	F02	51°34.909'N 01°33.716'E
A14	51°35.634'N 01°25.755'E	D10	51°35.935'N 01°29.169'E	F03	51°35.139'N 01°33.290'E
A15	51°35.865'N 01°25.443'E	D11	51°36.170'N 01°28.733'E	F04	51°35.369'N 01°32.864'E
B08	51°34.660'N 01°28.881'E	D12	51°36.395'N 01°28.317'E	F05	51°35.599'N 01°32.438'E
B09	51°34.886'N 01°28.448'E	D13	51°36.625'N 01°27.891'E	F06	51°35.834'N 01°32.004'E
B10	51°35.121'N 01°28.029'E	D14	51°36.855'N 01°27.465'E	F07	51°36.059'N 01°31.586'E
B11	51°35.351'N 01°27.603'E	D15	51°37.086'N 01°27.039'E	F08	51°36.289'N 01°31.160'E
B12	51°35.581'N 01°27.177'E	D16	51°37.316'N 01°26.613'E	F09	51°36.519'N 01°30.735'E
B13	51°35.811'N 01°26.751'E	D17	51°37.535'N 01°26.206'E	F10	51°36.749'N 01°30.309'E
B15	51°36.271'N 01°25.900'E	D19	51°38.006'N 01°25.335'E	F11	51°36.988'N 01°29.896'E
B16	51°36.501'N 01°25.473'E	D20	51°38.024'N 01°24.612'E	F12	51°37.210'N 01°29.457'E
B17	51°36.738'N 01°25.090'E	E02	51°34.501'N 01°33.146'E	F13	51°37.440'N 01°29.031'E
C06	51°34.607'N 01°30.302'E	E03	51°34.732'N 01°32.720'E	F14	51°37.670'N 01°28.605'E
C07	51°34.837'N 01°29.876'E	E04	51°34.962'N 01°32.294'E	F15	51°37.900'N 01°28.179'E
C08	51°35.085'N 01°29.418'E	E05	51°35.192'N 01°31.868'E	F16	51°38.130'N 01°27.753'E
C09	51°35.298'N 01°29.025'E	E06	51°35.422'N 01°31.442'E	F17	51°38.360'N 01°27.327'E
C10	51°35.528'N 01°28.599'E	E07	51°35.652'N 01°31.016'E	F18	51°38.590'N 01°26.901'E
C11	51°35.758'N 01°28.173'E	E08	51°35.882'N 01°30.590'E	F19	51°38.820'N 01°26.475'E
C12	51°35.988'N 01°27.747'E	E09	51°36.112'N 01°30.165'E	F20	51°39.050'N 01°26.048'E
C13	51°36.220'N 01°27.324'E	E10	51°36.330'N 01°29.727'E	G03	51°35.546'N 01°33.860'E
C14	51°36.448'N 01°26.895'E	E11	51°36.573'N 01°29.313'E	G04	51°35.776'N 01°33.434'E
C15	51°36.678'N 01°26.469'E	E12	51°36.802'N 01°28.886'E	G05	51°36.006'N 01°33.008'E
C17	51°37.138'N 01°25.616'E	E13	51°37.033'N 01°28.461'E	G06	51°36.244'N 01°32.601'E
C18	51°37.369'N 01°25.191'E	E14	51°37.263'N 01°28.035'E	G07	51°36.466'N 01°32.156'E
C19	51°37.599'N 01°24.765'E	E15	51°37.493'N 01°27.609'E	G08	51°36.701'N 01°31.757'E
D04	51°34.554'N 01°31.724'E	E16	51°37.723'N 01°27.183'E	G09	51°36.927'N 01°31.305'E
D05	51°34.784'N 01°31.298'E	E17	51°37.953'N 01°26.757'E	G10	51°37.151'N 01°30.871'E



## Contact us

- ☎ +44 (0)131 380 4545
- ✉ [kingfisher@seafish.co.uk](mailto:kingfisher@seafish.co.uk)
- 🐦 @kingfisherinfo
- 📘 @KingfisherInformation
- 🌐 [www.kis-orca.org](http://www.kis-orca.org)



# Asset locations

Turbines		Turbines		Turbines	
G11	51°37.390'N 01°30.446'E	I08	51°37.511'N 01°32.871'E	K13	51°39.477'N 01°31.885'E
G12	51°37.617'N 01°30.027'E	I09	51°37.741'N 01°32.446'E	K14	51°39.707'N 01°31.458'E
G13	51°37.847'N 01°29.601'E	I10	51°37.971'N 01°32.020'E	K15	51°39.954'N 01°30.995'E
G14	51°38.077'N 01°29.176'E	I11	51°38.201'N 01°31.594'E	K16	51°40.167'N 01°30.607'E
G15	51°38.307'N 01°28.749'E	I12	51°38.431'N 01°31.168'E	K17	51°40.402'N 01°30.164'E
G16	51°38.537'N 01°28.323'E	I13	51°38.662'N 01°30.742'E	K18	51°40.621'N 01°29.773'E
G17	51°38.768'N 01°27.897'E	I14	51°38.892'N 01°30.316'E	K19	51°40.858'N 01°29.328'E
G18	51°39.006'N 01°27.482'E	I15	51°39.122'N 01°29.890'E	K20	51°41.100'N 01°28.879'E
G19	51°39.228'N 01°27.045'E	I16	51°39.352'N 01°29.464'E	L11	51°39.424'N 01°33.306'E
G20	51°39.458'N 01°26.619'E	I17	51°39.582'N 01°29.038'E	L12	51°39.654'N 01°32.880'E
H04	51°36.183'N 01°34.004'E	I18	51°39.812'N 01°28.612'E	L13	51°39.862'N 01°32.455'E
H05	51°36.413'N 01°33.579'E	I19	51°40.042'N 01°28.186'E	L14	51°40.114'N 01°32.028'E
H06	51°36.644'N 01°33.152'E	I20	51°40.276'N 01°27.753'E	L15	51°40.345'N 01°31.602'E
H07	51°36.857'N 01°32.766'E	J06	51°37.452'N 01°34.282'E	L16	51°40.575'N 01°31.176'E
H08	51°37.104'N 01°32.301'E	J07	51°37.681'N 01°33.856'E	L17	51°40.805'N 01°30.750'E
H09	51°37.334'N 01°31.876'E	J08	51°37.918'N 01°33.442'E	L18	51°41.035'N 01°30.324'E
H10	51°37.564'N 01°31.450'E	J09	51°38.150'N 01°33.019'E	L19	51°41.265'N 01°29.899'E
H11	51°37.794'N 01°31.023'E	J10	51°38.380'N 01°32.593'E	L20	51°41.481'N 01°29.523'E
H12	51°38.024'N 01°30.598'E	J11	51°38.610'N 01°32.167'E	M14	51°40.473'N 01°32.617'E
H13	51°38.254'N 01°30.172'E	J12	51°38.840'N 01°31.741'E	M15	51°40.752'N 01°32.173'E
H14	51°38.484'N 01°29.746'E	J13	51°39.070'N 01°31.315'E	M16	51°40.982'N 01°31.747'E
H15	51°38.714'N 01°29.319'E	J14	51°39.300'N 01°30.889'E	M17	51°41.212'N 01°31.320'E
H16	51°38.945'N 01°28.894'E	J15	51°39.530'N 01°30.463'E	M18	51°41.428'N 01°30.864'E
H17	51°39.192'N 01°28.435'E	J16	51°39.760'N 01°30.037'E	M19	51°41.672'N 01°30.468'E
H18	51°39.405'N 01°28.041'E	J17	51°39.990'N 01°29.611'E	M20	51°41.902'N 01°30.042'E
H19	51°39.626'N 01°27.631'E	J18	51°40.220'N 01°29.185'E		
H20	51°39.865'N 01°27.190'E	J19	51°40.451'N 01°28.759'E		
I05	51°36.845'N 01°34.146'E	J20	51°40.681'N 01°28.332'E		
I06	51°37.051'N 01°33.723'E	K11	51°39.017'N 01°32.736'E		
I07	51°37.281'N 01°33.297'E	K12	51°39.257'N 01°32.292'E		



## Contact us

- ☎ +44 (0)131 380 4545
- ✉ [kingfisher@seafish.co.uk](mailto:kingfisher@seafish.co.uk)
- 🐦 @kingfisherinfo
- 📘 @KingfisherInformation
- 🌐 [www.kis-orca.org](http://www.kis-orca.org)

