



Kingfisher Wind farm Chart



Kentish Flats and Extension Offshore wind farm January 2026



Emergency contact number
+44(0)1843 572149

Description

The Kentish Flats Offshore Wind Farm and Extension are operated by Vattenfall. It is situated approximately 8.5 km from shore in the Southern North Sea, in the Thames Estuary. The wind farm is fully operational and has 30 turbines, a total capacity of 90 MW and covers an area of approximately 10 km². The wind farm extension is fully operational and has 15 turbines, a total capacity of 49.5 MW and covers an area of approximately 8 km².

Emergency procedures






1. If you suspect you have snagged a subsea cable or renewable energy structure, DO NOT endanger your vessel and crew by attempting to recover your gear.
2. Carefully plot your vessel's position as accurately as possible.
3. Advise the Coastguard of your situation, and call the 24 hour Emergency Number and state that an incident is occurring concerning a subsea cable or renewable energy structure.

Reducing the risks whilst fishing

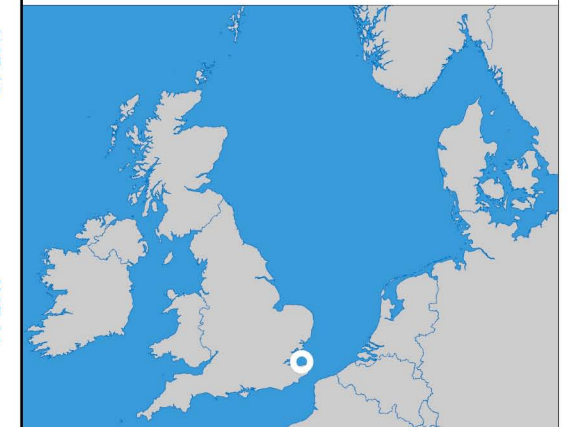
To reduce the risks of fishing near offshore structures, it is essential to be up to date with KIS-ORCA information. KIS-ORCA information is easy to install on your vessel's fishing plotter and ensures skippers are able to make informed decisions for their safety.

The closer to the surface a subsea cable is lifted when fouled by fishing gear, the more danger there is to the fishing vessel. In the interests of fishing safety and to prevent damage to subsea structures, fishermen are advised to exercise caution when fishing in the vicinity of subsea cables and renewable energy structures. Loss of gear, fishing time and catch can result if a trawler snags a subsea structure and there is serious risk of loss of life.

**Kentish Flats & Extension
Offshore Wind Farm**

-  Site boundary
-  Wind turbine
-  Export cable
-  Inter array cable
-  Power cable

Grey coloured features displayed on this chart represent additional offshore wind farm structures. Visit www.kis-orca.org/map for more info.

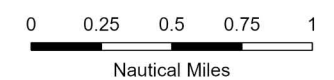


Projection: World_Mercator
Spheroid: GCS_WGS_1984
Datum: D_WGS_1984

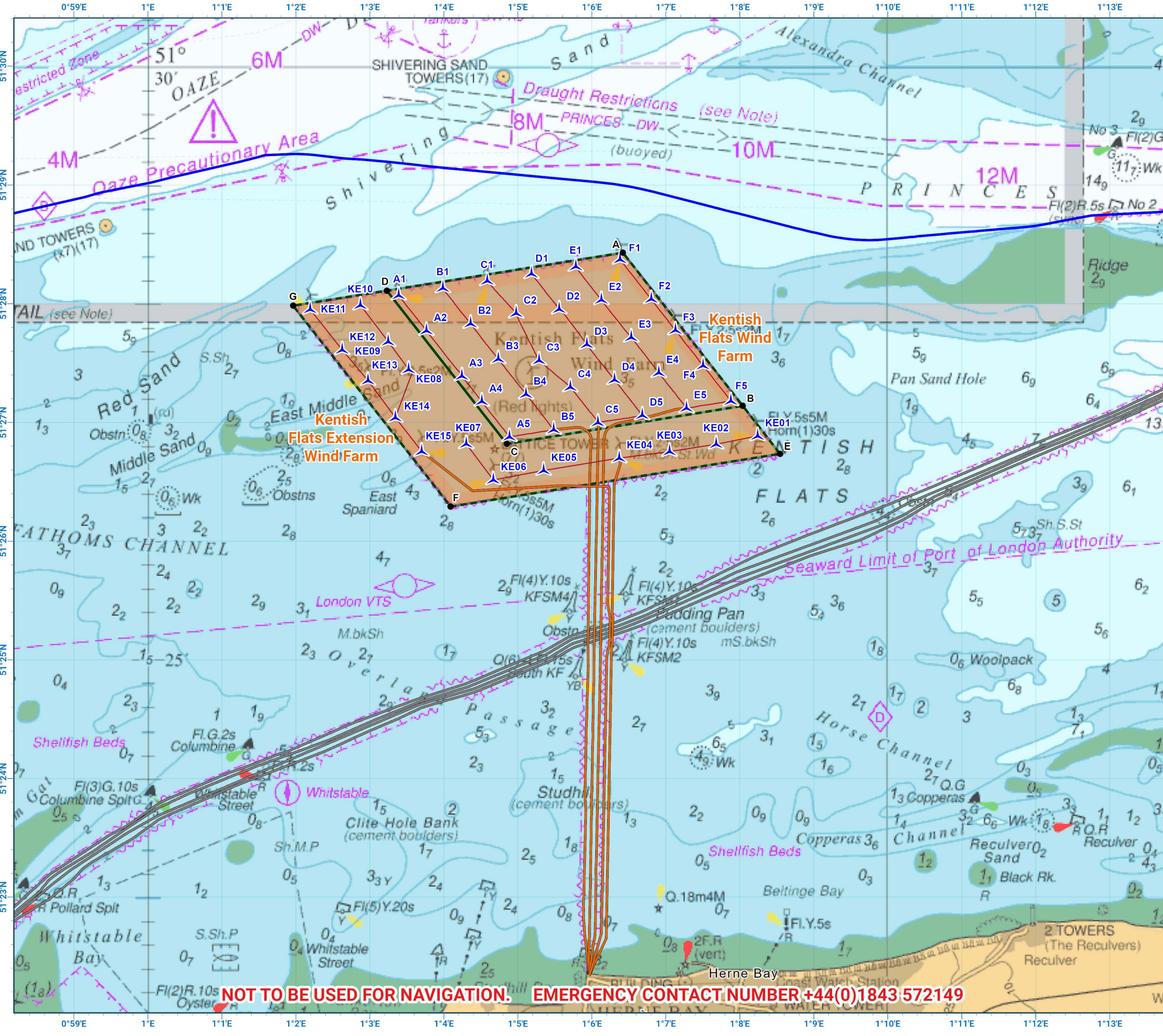
This data is issued as a guide only. Seafish, cable / structure owners and Distributors accept no responsibility for any inaccuracies however caused.

Please be aware that other structures & cables may exist in addition to those shown on this chart.

© British Crown Copyright, 2025/26.
All rights reserved.
Not to be used for Navigation.



Scale @ A3:
1:50,000



NOT TO BE USED FOR NAVIGATION. EMERGENCY CONTACT NUMBER +44(0)1843 572149

Asset locations

Kentish Flats Extents

A	51°28.430'N 01°06.420'E
B	51°27.140'N 01°08.040'E
C	51°26.820'N 01°04.850'E
D	51°28.110'N 01°03.230'E

Kentish Flats Extension Extents

E	51°26.736'N 01°08.544'E
F	51°26.292'N 01°04.092'E
G	51°27.984'N 01°01.962'E

Kentish Flats Turbines

A1	51°28.070'N 01°03.389'E
A2	51°27.772'N 01°03.764'E
A3	51°27.390'N 01°04.244'E
A4	51°27.176'N 01°04.513'E
A5	51°26.878'N 01°04.886'E
B1	51°28.131'N 01°03.987'E
B2	51°27.832'N 01°04.361'E
B3	51°27.534'N 01°04.736'E
B4	51°27.237'N 01°05.110'E
B5	51°26.939'N 01°05.485'E
C1	51°28.191'N 01°04.586'E
C2	51°27.919'N 01°04.977'E
C3	51°27.522'N 01°05.287'E
C4	51°27.297'N 01°05.709'E
C5	51°26.999'N 01°06.083'E
D1	51°28.251'N 01°05.184'E
D2	51°27.953'N 01°05.559'E
D3	51°27.656'N 01°05.933'E
D4	51°27.358'N 01°06.306'E
D5	51°27.060'N 01°06.682'E
E1	51°28.312'N 01°05.783'E
E2	51°28.032'N 01°06.129'E
E3	51°27.716'N 01°06.532'E
E4	51°27.418'N 01°06.905'E
E5	51°27.120'N 01°07.280'E
F1	51°28.372'N 01°06.381'E
F2	51°28.039'N 01°06.803'E
F3	51°27.776'N 01°07.130'E
F4	51°27.478'N 01°07.503'E
F5	51°27.180'N 01°07.878'E

Kentish Flats Extension Turbines

KE01	51°26.885'N 01°08.240'E
KE02	51°26.816'N 01°07.680'E
KE03	51°26.754'N 01°07.050'E
KE04	51°26.699'N 01°06.370'E
KE05	51°26.594'N 01°05.348'E
KE06	51°26.515'N 01°04.668'E
KE07	51°26.818'N 01°04.302'E
KE08	51°27.445'N 01°03.524'E
KE09	51°27.679'N 01°03.248'E
KE10	51°27.986'N 01°02.872'E
KE11	51°27.951'N 01°02.193'E
KE12	51°27.610'N 01°02.625'E
KE13	51°27.352'N 01°02.974'E
KE14	51°27.040'N 01°03.344'E
KE15	51°26.755'N 01°03.700'E



Contact us

- +44 (0)131 380 4545
- kingfisher@seafish.co.uk
- @kingfisherinfo
- @KingfisherInformation
- www.kis-orca.org

