



# Kingfisher Wind farm Chart



## Inner Dowsing and Lynn Offshore wind farm January 2026



**Emergency contact number**  
**+44(0)1472 352854**

### Description

The Inner Dowsing and Lynn Wind Farms are operated by Xceco. They are situated approximately 5 km from shore in the North Sea, off the Lincolnshire coast. Inner Dowsing wind farm is fully operational and has 27 turbines, a total capacity of 97.2 MW and covers an area of approximately 9 km<sup>2</sup>. Lynn wind farm is fully operational and has 27 turbines, a total capacity of 97.2 MW and covers an area of approximately 8 km<sup>2</sup>.

### Emergency procedures

1. If you suspect you have snagged a subsea cable or renewable energy structure, DO NOT endanger your vessel and crew by attempting to recover your gear.
2. Carefully plot your vessel's position as accurately as possible.
3. Advise the Coastguard of your situation, and call the 24 hour Emergency Number and state that an incident is occurring concerning a subsea cable or renewable energy structure.

### Reducing the risks whilst fishing

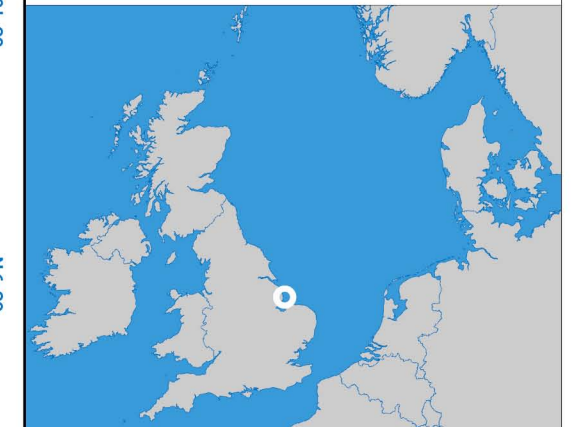
To reduce the risks of fishing near offshore structures, it is essential to be up to date with KIS-ORCA information. KIS-ORCA information is easy to install on your vessel's fishing plotter and ensures skippers are able to make informed decisions for their safety.

The closer to the surface a subsea cable is lifted when fouled by fishing gear, the more danger there is to the fishing vessel. In the interests of fishing safety and to prevent damage to subsea structures, fishermen are advised to exercise caution when fishing in the vicinity of subsea cables and renewable energy structures. Loss of gear, fishing time and catch can result if a trawler snags a subsea structure and there is serious risk of loss of life.

**Inner Dowsing and Lynn  
Offshore Wind Farm**

-  Site boundary
-  Wind turbine
-  Export cable
-  Inter array cable

Grey coloured features displayed on this chart represent additional offshore wind farm structures. Visit [www.kis-orca.org/map](http://www.kis-orca.org/map) for more info.

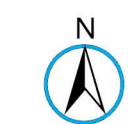


Projection: World\_Mercator  
Spheroid: GCS\_WGS\_1984  
Datum: D\_WGS\_1984

This data is issued as a guide only. Seafish, cable / structure owners and Distributors accept no responsibility for any inaccuracies however caused.

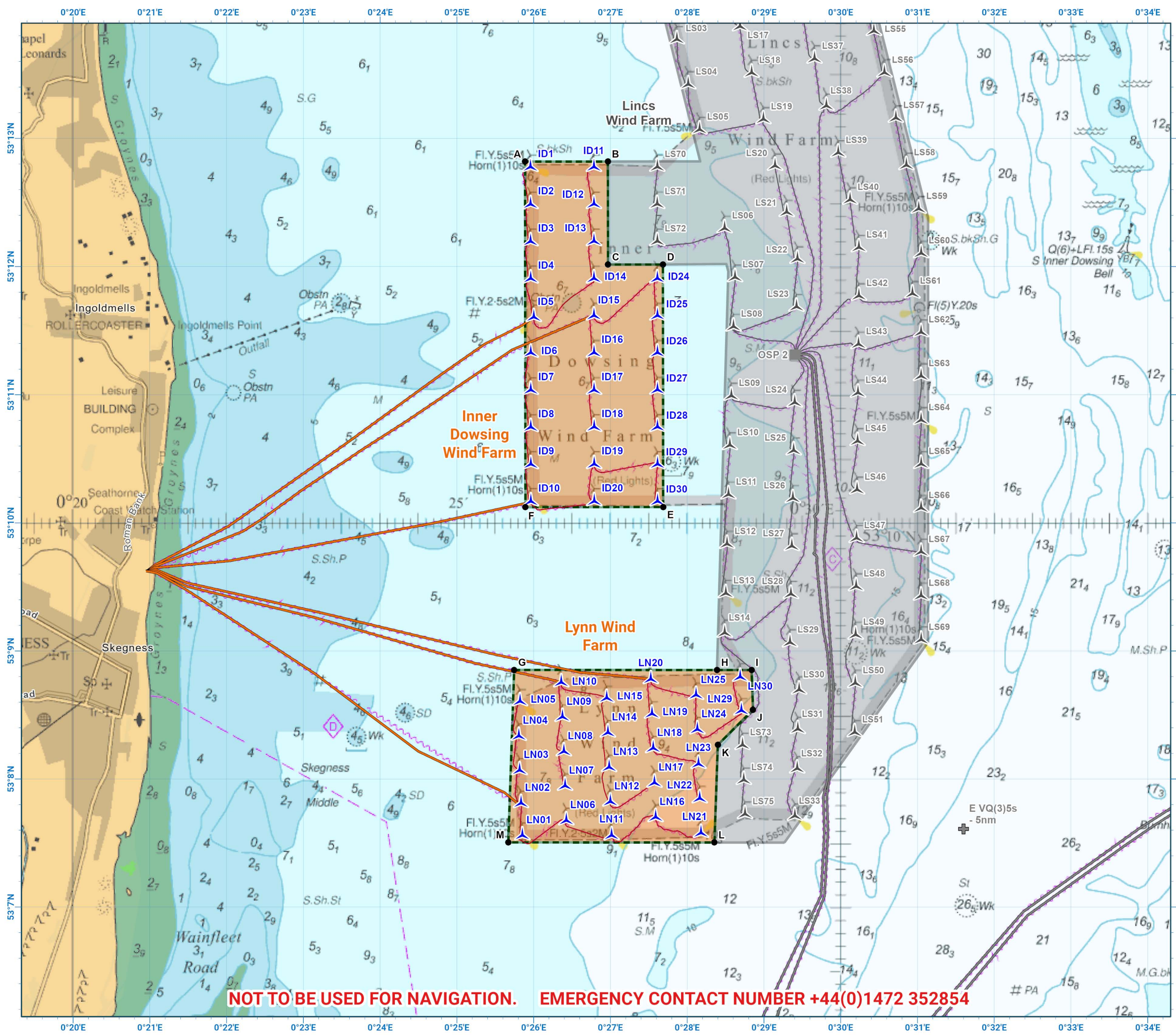
Please be aware that other structures & cables may exist in addition to those shown on this chart.

© British Crown Copyright, 2025/26.  
All rights reserved.  
Not to be used for Navigation.



Scale @ A3:  
1:50,000

**NOT TO BE USED FOR NAVIGATION. EMERGENCY CONTACT NUMBER +44(0)1472 352854**



# Asset locations

## Inner Dowsing Extents

A	53°12.819'N 00°25.888'E
B	53°12.819'N 00°26.967'E
C	53°12.016'N 00°26.969'E
D	53°12.016'N 00°27.685'E
E	53°10.124'N 00°27.687'E
F	53°10.123'N 00°25.893'E

## Lynn Extents

G	53°08.852'N 00°25.746'E
H	53°08.851'N 00°28.389'E
I	53°08.851'N 00°28.839'E
J	53°08.541'N 00°28.858'E
K	53°08.267'N 00°28.399'E
L	53°07.504'N 00°28.355'E
M	53°07.505'N 00°25.670'E

## Inner Dowsing Turbines

ID1	53°12.777'N 00°25.959'E
ID2	53°12.487'N 00°25.960'E
ID3	53°12.197'N 00°25.960'E
ID4	53°11.907'N 00°25.961'E
ID5	53°11.606'N 00°26.002'E
ID6	53°11.328'N 00°25.962'E
ID7	53°11.038'N 00°25.962'E
ID8	53°10.748'N 00°25.963'E
ID9	53°10.458'N 00°25.964'E
ID10	53°10.168'N 00°25.964'E
ID11	53°12.777'N 00°26.785'E
ID12	53°12.488'N 00°26.785'E
ID13	53°12.198'N 00°26.786'E
ID14	53°11.908'N 00°26.786'E
ID15	53°11.618'N 00°26.786'E
ID16	53°11.329'N 00°26.787'E
ID17	53°11.038'N 00°26.787'E
ID18	53°10.749'N 00°26.788'E
ID19	53°10.459'N 00°26.788'E
ID20	53°10.169'N 00°26.789'E
ID24	53°11.908'N 00°27.611'E
ID25	53°11.618'N 00°27.612'E
ID26	53°11.329'N 00°27.612'E
ID27	53°11.039'N 00°27.612'E
ID28	53°10.749'N 00°27.613'E
ID29	53°10.459'N 00°27.614'E
ID30	53°10.169'N 00°27.614'E

## Lynn Turbines

LN01	53°07.560'N 00°25.853'E
LN02	53°07.812'N 00°25.835'E
LN03	53°08.069'N 00°25.818'E
LN04	53°08.337'N 00°25.807'E
LN05	53°08.607'N 00°25.822'E
LN06	53°07.677'N 00°26.425'E
LN07	53°07.947'N 00°26.409'E
LN08	53°08.216'N 00°26.393'E
LN09	53°08.485'N 00°26.376'E
LN10	53°08.755'N 00°26.360'E
LN11	53°07.560'N 00°27.016'E
LN12	53°07.824'N 00°26.999'E
LN13	53°08.093'N 00°26.983'E
LN14	53°08.363'N 00°26.967'E
LN15	53°08.633'N 00°26.951'E
LN16	53°07.702'N 00°27.589'E
LN17	53°07.971'N 00°27.574'E
LN18	53°08.241'N 00°27.557'E
LN19	53°08.510'N 00°27.542'E
LN20	53°08.780'N 00°27.526'E
LN21	53°07.579'N 00°28.180'E
LN22	53°07.849'N 00°28.164'E
LN23	53°08.118'N 00°28.148'E
LN24	53°08.388'N 00°28.133'E
LN25	53°08.657'N 00°28.116'E
LN29	53°08.535'N 00°28.707'E
LN30	53°08.798'N 00°28.691'E



## Contact us

- +44(0)131 380 4545
- kingfisher@seafish.co.uk
- @kingfisherinfo
- @KingfisherInformation
- www.kis-orca.org

